



MEN'S 2021

COMPETITIVE + IN STOCK



YOU ARE A

CHAMPION

YOU ARE A CHAMPION

YOU ARE 

GK IS COMMITTED TO PROVIDING UNSURPASSED FIT, PREMIUM QUALITY CONSTRUCTION, AND INNOVATIVE DESIGNS TO GYMNASTS OF ALL AGES AND LEVELS. WITH NEW STYLES, NEW FABRICS, NEW EMBELLISHMENTS, AND MORE, GK CAN OUTFIT YOUR TEAM IN UNIQUE GYMNASTICS APPAREL THAT ALLOWS THEM TO COMPETE AND TRAIN AT THE HIGHEST LEVEL.

BY CHOOSING GK, OUR CUSTOMERS CAN EXPECT:

INNOVATIVE DESIGNS

With fashion forward designs, on-trend color options and premium fabrics and embellishment options, GK apparel will always stand out on the competition floor.

UNSURPASSED FIT

With 4-way stretch fabrics and a proprietary fit formula, GK delivers apparel that performs with the athlete.

PREMIUM QUALITY CONSTRUCTION

GK apparel is made to meet the highest quality standards. With quality assurance checks at each step in the construction process, GK ensure each garment is produced with care and meets, or exceeds, all quality standards.

ONE-ON-ONE DESIGN SERVICES

GK has a team of Sales Representatives that are ready to outfit your team in the world's best fitting gymnastics apparel. From In Stock, to Special Order, or even Custom designs, our knowledgeable Sales Team is here to assist you in the process.

TRUSTED BY CHAMPIONS

GK is trusted by the worlds most elite level athletes! Sam Mikulak, Yul Moldauer, Simone Biles, Laurie Hernandez, and Katelyn Ohashi all trust GK, and only GK, as their official leotard and apparel supplier.



TABLE OF CONTENTS

Special Order

- 04 Special Order Competitive Apparel
- 24 Special Order Competitive Sublimation
- 26 Special Order Engineered Sublimation
- 30 Special Order Custom Sublimation
- 34 Special Order Warm-Ups



In Stock

- 40 In Stock Competition Apparel
- 50 In Stock Warm-Ups
- 53 In Stock Pants & Shorts
- 56 Embellishments & Fabrics
- 59 Sizing Instructions & Charts

Competitive Apparel

SHIRTS, SHORTS, & PANTS

Known for exceptional fit and strong designs, GK Special Order Competitive Apparel allows you to choose a unique competitive shirt design, then customize it by selecting your colors and added a name or logo to your design.



Showing Strength



1135S_{A01}
TECH INSPIRED SUBLIMATION
pg. 08



1137S_{A01}
SUBLIMATION ON POLYTEK
pg. 11

CELEBRATING THE INCREDIBLE STRENGTH OF GYMNASTS, THESE COMPETITION SHIRTS SUPPORT THE ATHLETE THROUGH EVEN THE HARDEST ROUTINES.



A 1135S A01
Competitive shirt with key lime, midnight, and gray sublimated on polytek.
Style coordinates with stock style 1893M.

A 1812M COL 116
Navy campus stretchtek short with elastic drawstring
and upper thigh hemline.



B 1135S A01
Competitive shirt with steel, red, and white sublimated on polytek.
Style coordinates with stock style 1893M.

B 1811M COL Y06
Steel campus stretchtek short with elastic drawstring
and mid thigh hemline.



C 1138S A01
Competitive shirt with navy and red sublimated on polytek.
Style coordinates with stock style 1895M.

C 1813M COL 152
Red campus stretchtek pants with comfortable waistband
and foot stirrups.

D 1138S A01
Competitive shirt with black and white sublimated on polytek.
Style coordinates with stock style 1895M.

OPTIONS SHOWN: Team name on front within sublimation.
D 1812M COL 016
Black campus stretchtek short with elastic drawstring and
upper thigh hemline.



A 1136S A01
Competitive shirt with pewter, black, and purple sublimated on polytek.
Style coordinates with stock style 1894M.

OPTIONS SHOWN: Team name on front within sublimation.

A 1812M COL 016
Black campus stretchtek short with elastic drawstring and upper thigh hemline.



B 1136S A01
Competitive shirt with cardinal, pewter, and gold sublimated on polytek.
Style coordinates with stock style 1894M.

B 1849 A01
Pewter nylon/spandex pants with comfortable waistband and foot stirrups. Features flat front without pin tuck seam.



C 1137S A01
Competitive shirt with white and black sublimated on polytek.
Style coordinates with stock style 1896M.

OPTIONS SHOWN: Athlete name on back within sublimation.

C 1812M COL 016
Black campus stretchtek short with elastic drawstring and upper thigh hemline.

D 1137S A01
Competitive shirt with midnight and yellow sublimated on polytek.
Style coordinates with stock style 1896M.

D 1812M COL 116
Navy campus stretchtek short with elastic drawstring and upper thigh hemline.



A 1130S **A01**
Competitive shirt shown in sublimated steel, black and red on polytek.
OPTIONS SHOWN: Custom athlete's name on back within sublimation.

A 1812M **COL 152**
Red campus stretchtek short with elastic drawstring and upper thigh hemline.



B 1132S **A01**
Competitive shirt shown in sublimated cardinal, steel and black on polytek.

B 1812M **COL Y06**
Steel campus stretchtek short with elastic drawstring and upper thigh hemline.



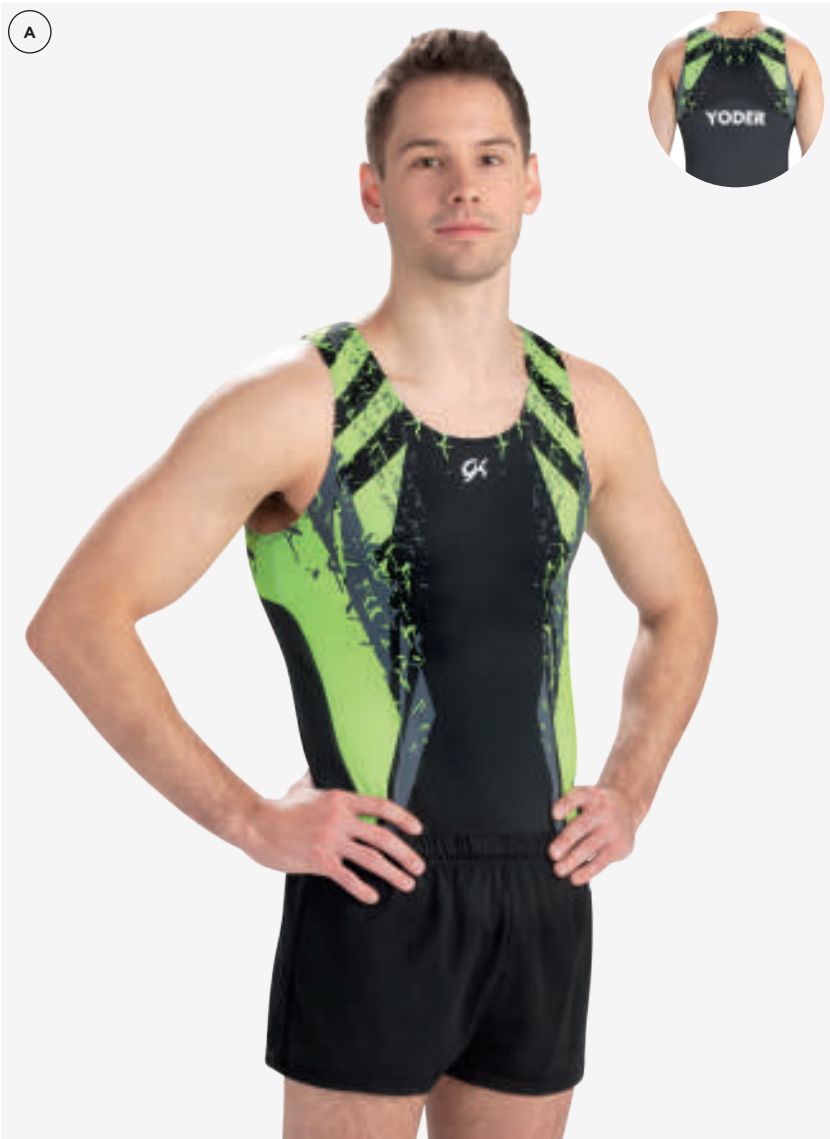
C 1124S **A02**
Competitive shirt shown in sublimated royal, aluminum and flannel gray on polytek with charcoal techmesh.

C 1849 **A02**
Royal campus stretchtek pants with comfortable waistband and foot stirrups. Features flat front without pin tuck seam.



D 1117S **A01**
Competitive shirt shown in sublimated white, navy and candy apple on polytek with white campus performance mesh.
OPTIONS SHOWN: Custom team name on chest within sublimation.

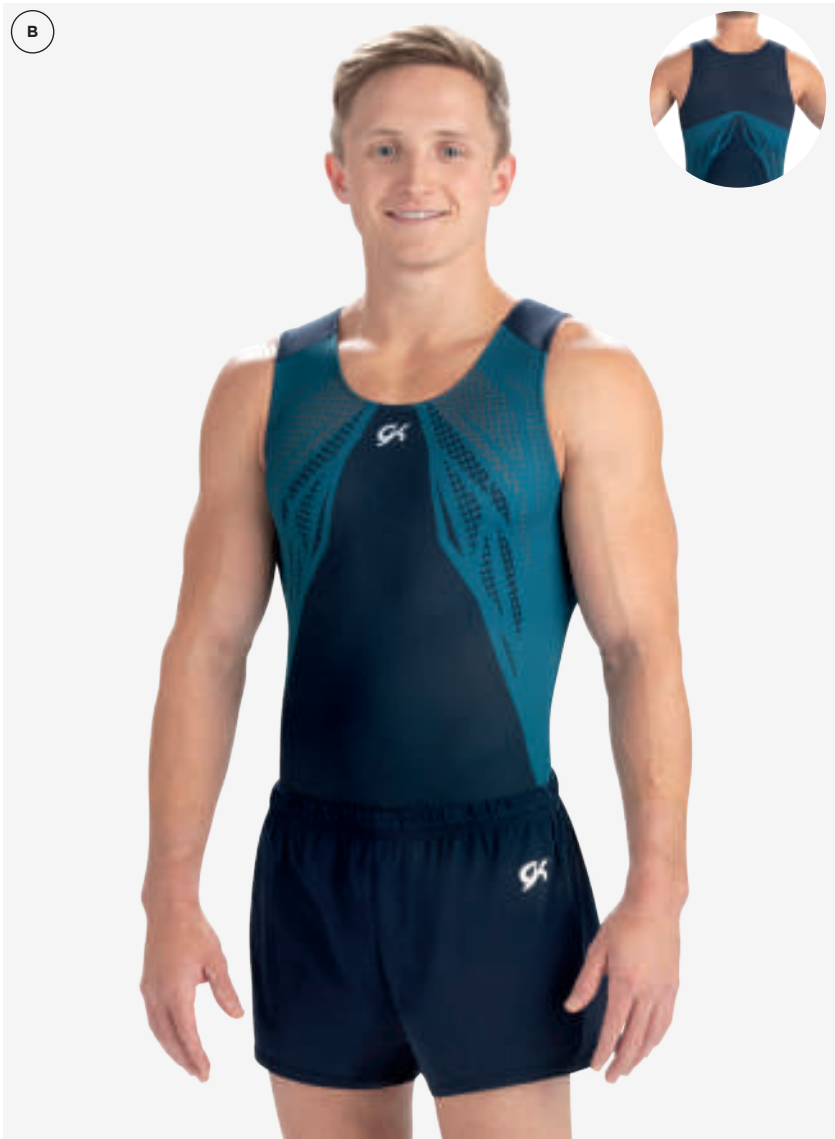
D 1817M **COL 116**
Navy nylon/spandex shorts with elastic drawstring and upper thigh hemline.



A 1126S **A02**
Competitive shirt shown in sublimated black, flannel gray and key lime on polytek with charcoal techmesh.

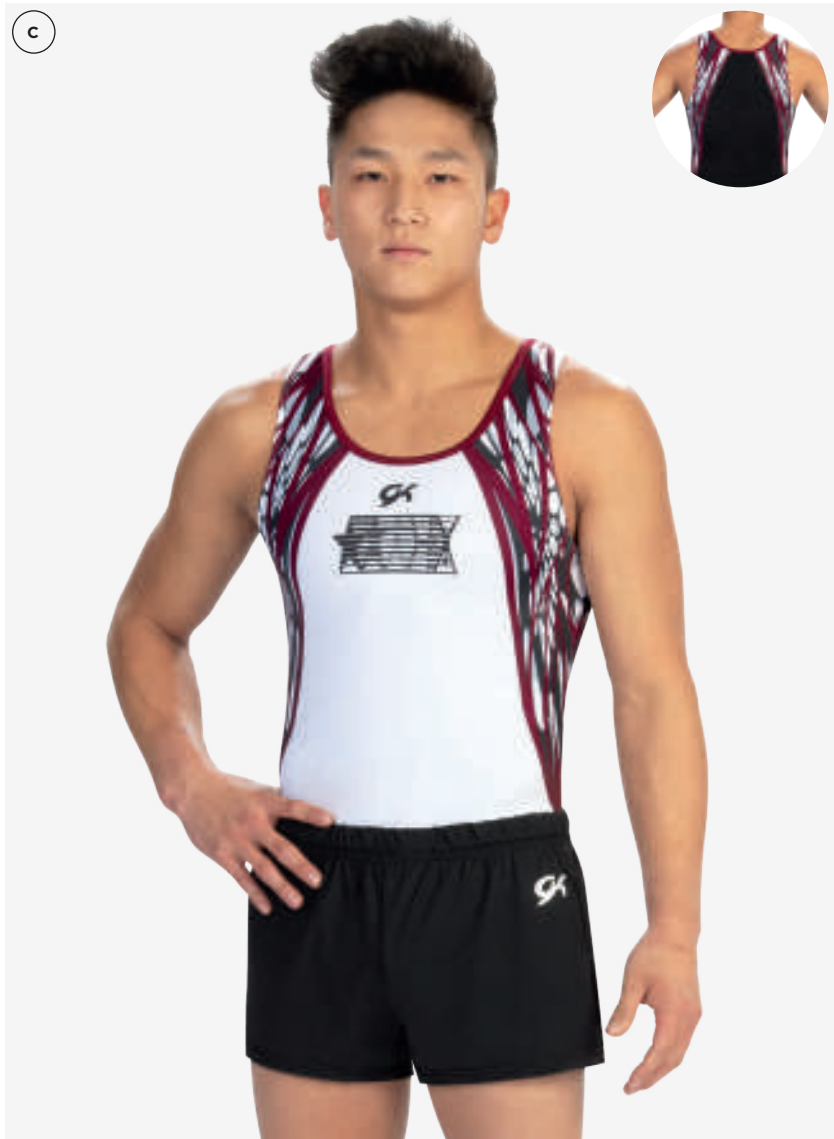
OPTIONS SHOWN: Custom athlete's name on back within sublimation.

A 1812M **COL 016**
Black campus stretchtek short with elastic drawstring and upper thigh hemline.



B 1134S **A01**
Competitive shirt shown in sublimated midnight, navy, spruce and pewter on polytek with navy campus performance mesh.

B 1812M **COL 116**
Navy campus stretchtek short with elastic drawstring and upper thigh hemline.



C 1129S **A02**
Competitive shirt shown in sublimated white, black, crimson and gray on polytek with black techmesh and burgundy nylon/spandex.

OPTIONS SHOWN: Custom athlete's name on chest within sublimation.

C 1812M **COL 016**
Black campus stretchtek short with elastic drawstring and upper thigh hemline.



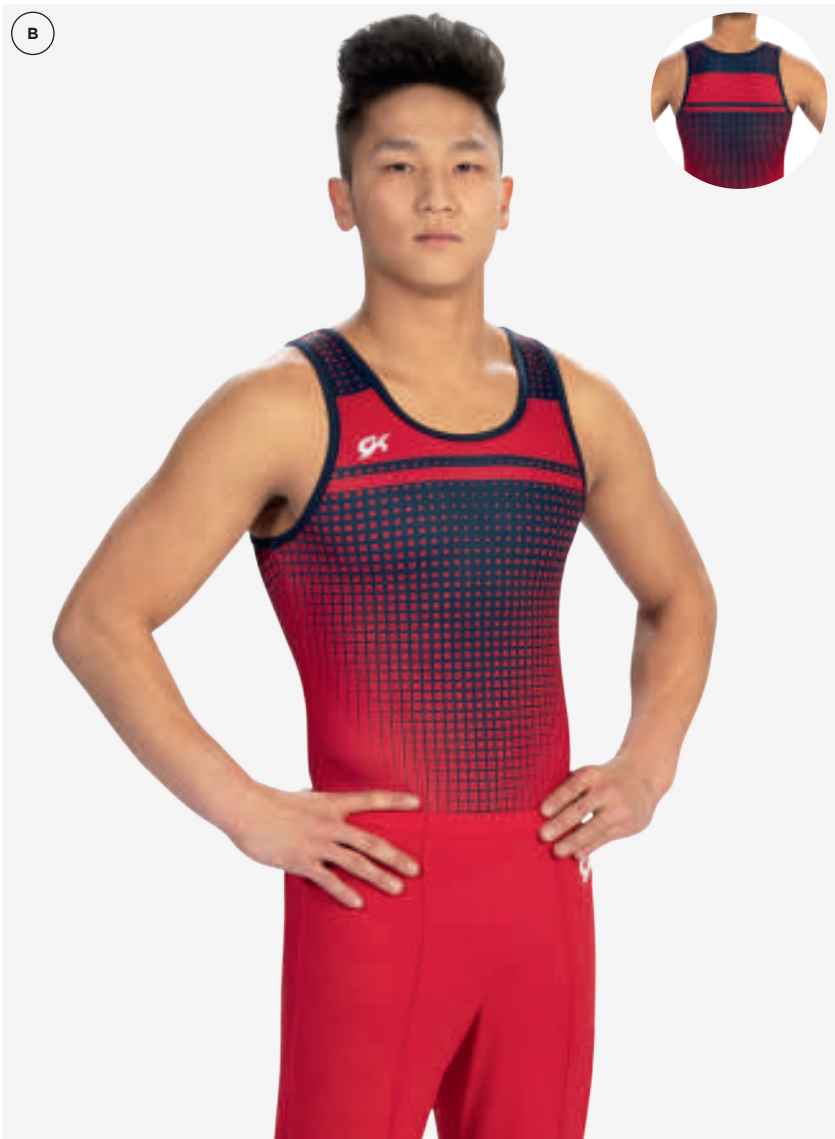
D 1127S **A01**
Competitive shirt shown in sublimated red and black on polytek with red campus performance mesh.

D 1812M **COL 152**
Red campus stretchtek short with elastic drawstring and upper thigh hemline.



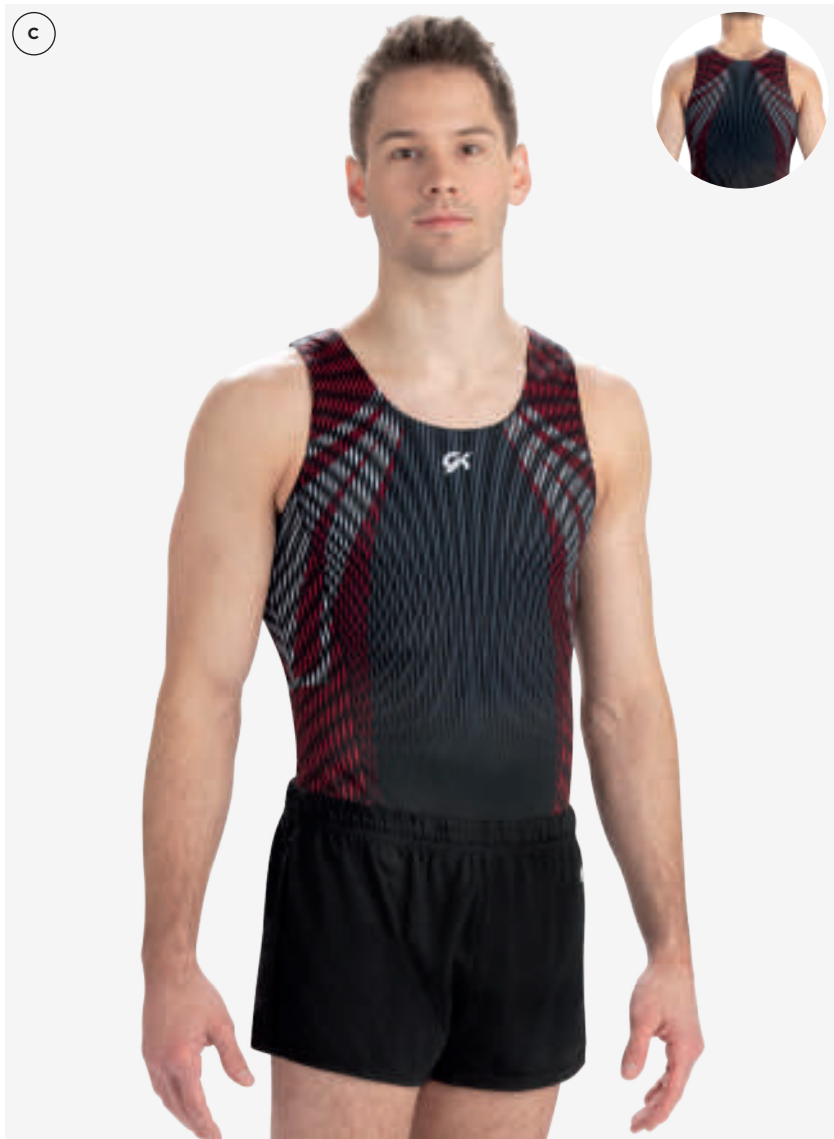
A 1128S **A01**
Competitive shirt shown in sublimated red, black and white on polytek.

A 1846M **COL 180**
White nylon/spandex pants with comfortable waistband and foot stirrups.



B 1131S **A01**
Competitive shirt shown in sublimated midnight and red on polytek with navy campus stretchtek.

B 1813M **COL 152**
Red campus stretchtek pants with comfortable waistband and foot stirrups.



C 1133S **A01**
Competitive shirt shown in sublimated black, red, white and flannel gray on polytek.

C 1812M **COL 016**
Black campus stretchtek short with elastic drawstring and upper thigh hemline.



D 1125S **A01**
Competitive shirt shown in sublimated gray, crimson and black on polytek.

D 1813M **COL 016**
Black campus stretchtek pants with comfortable waistband and foot stirrups.



A 1122S **A01**
Competitive shirt shown in sublimated white, midnight and yellow on polytek.
OPTIONS SHOWN: Custom athlete's name on back within sublimation

A 1812M **COL 116**
Navy campus stretchtek short with elastic drawstring and upper thigh hemline.



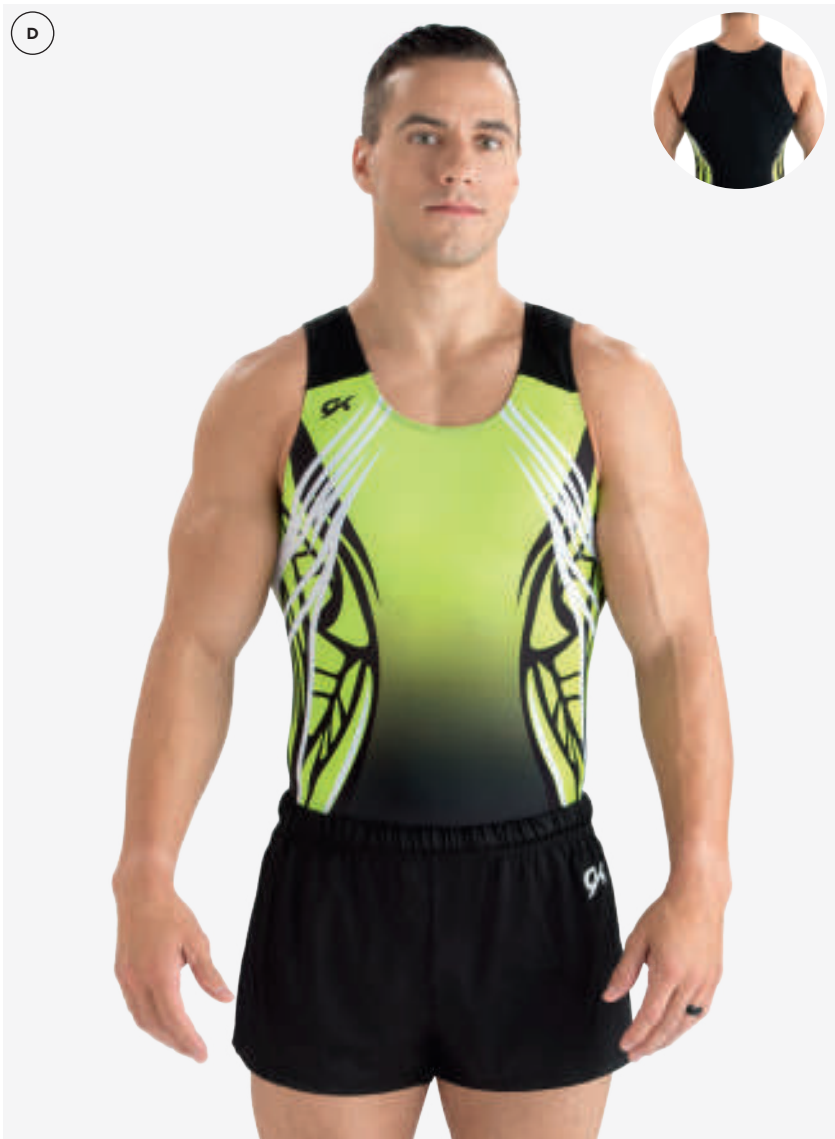
B 1119S **A01**
Competitive shirt shown in sublimated carbon and key lime on polytek.

B 1817 **A01**
Pewter nylon/spandex shorts with elastic drawstring and upper thigh hemline.



C 1118S **A01**
Competitive shirt shown in sublimated navy, white and yellow on polytek with navy campus performance mesh
OPTIONS SHOWN: Custom logo on chest within sublimation.

C 1813M **COL 180**
White campus stretchtek pants with comfortable waistband and foot stirrups.



D 1103S **A01**
Competitive shirt shown in sublimated key lime, white and black on polytek and black techmesh on back.

D 1817M **COL 016**
Black nylon/spandex shorts with elastic drawstring and upper thigh hemline.



A 1115S **A01**
Competitive shirt shown in sublimated candy apple, navy, white and cardinal on polytek with red campus performance mesh and white campus stretchtek.

A 1813M **COL 152**
Red campus stretchtek pants with comfortable waistband and foot stirrups.

OPTIONS SHOWN: Custom logo in white imprint.



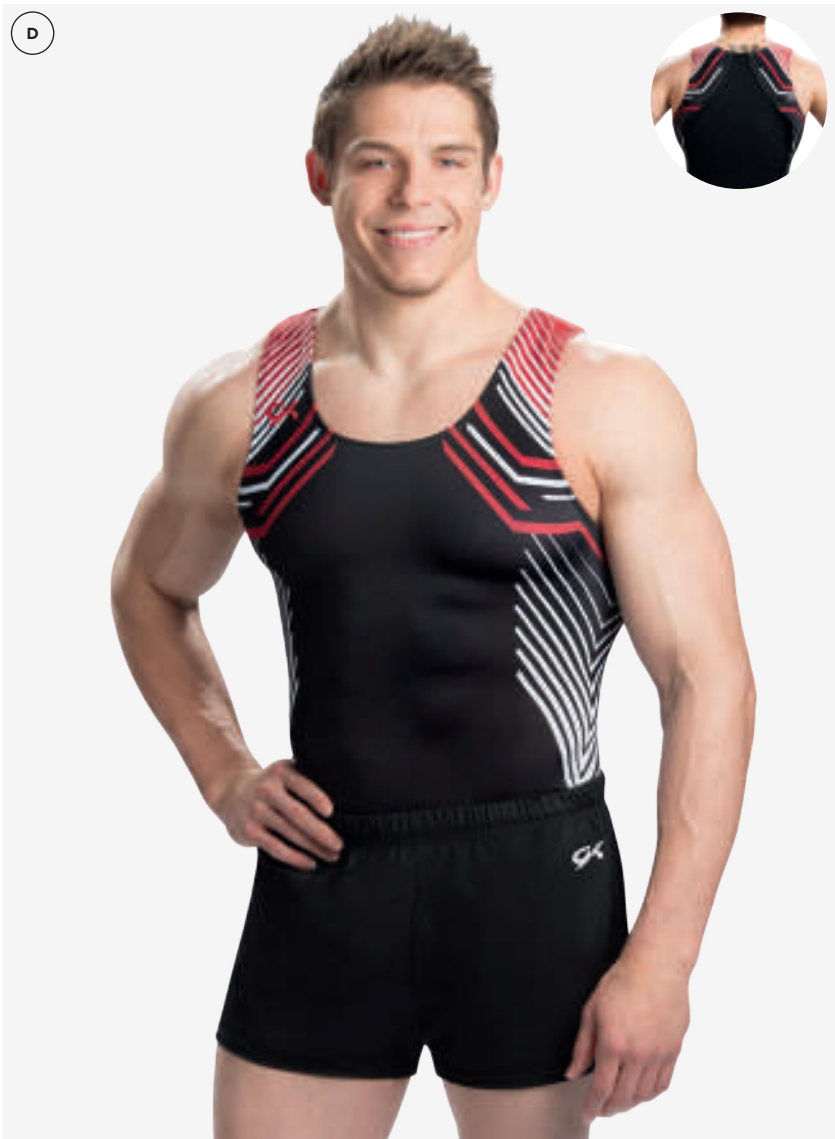
B 1123S **A01**
Competitive shirt shown in sublimated white, midnight and red on polytek with white campus performance mesh.

B 1849 **A02**
Red campus stretchtek pants with comfortable waistband and foot stirrups. Features flat front without pin tuck seam.



C 1120S **A01**
Competitive shirt shown in red campus stretchtek, red campus performance mesh and sublimation in black, red and flannel gray on polytek.

C 1849 **A02**
Red campus stretchtek pants with comfortable waistband and foot stirrups. Features flat front without pin tuck seam.



D 1109S **A01**
Competitive shirt shown in sublimated black, white and red on polytek with black techmesh back.

D 1817S **A01**
Black nylon/spandex shorts with elastic drawstring and upper thigh hemline.

A 1114S A02

Competitive shirt shown in sublimated royal, flannel gray, gray and aluminum on polytek with charcoal techmesh inserts.

A 1812M COL 160

Royal campus stretchtek short with elastic drawstring and upper thigh hemline.

OPTIONS SHOWN: Custom logo on shorts in white imprint.

B 1102S A01

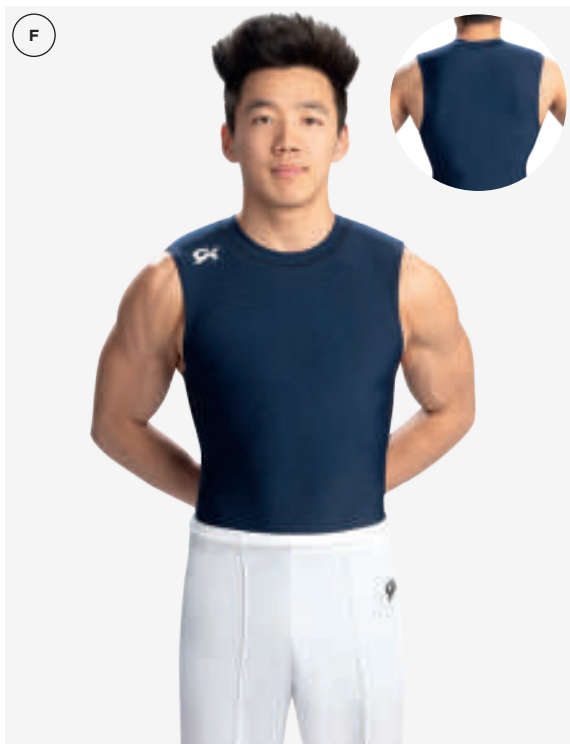
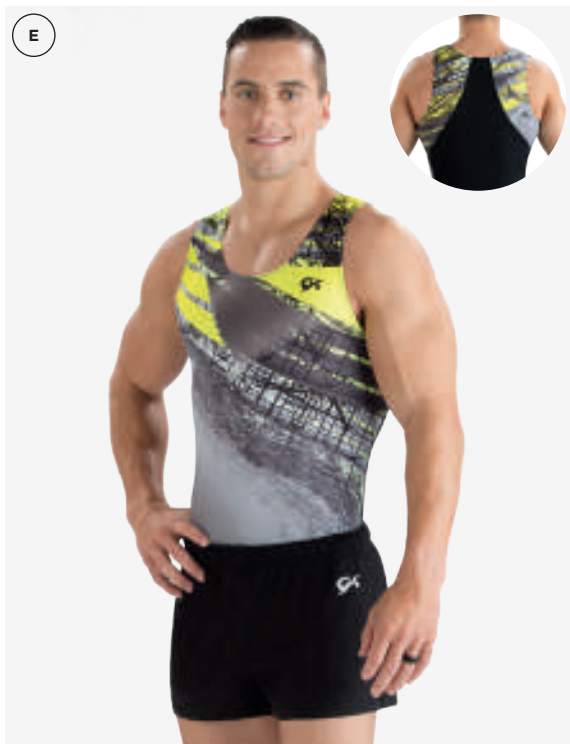
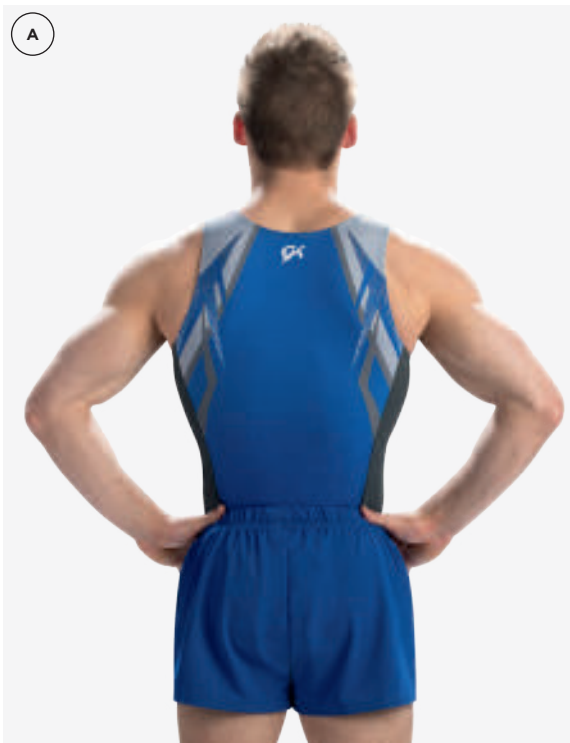
Competitive shirt shown in sublimated white, carbon and black on polytek with pewter and black nylon/spandex inserts and white techmesh back.

OPTIONS SHOWN: Custom team name on back in black imprint.

B 1817M COL 016

Black nylon/spandex shorts with elastic drawstring and upper thigh hemline.

GKELITE.COM 1 800 345 4087



C 1106S A01

Competitive shirt shown in sublimated royal, electric blue and navy on polytek.

C 1817M COL 116

Navy nylon/spandex shorts with elastic drawstring and upper thigh hemline.

D 1110S A02

Competitive shirt shown in sublimated black and red on polytek with white campus stretchtek and white campus performance mesh.

D 1811M COL 152

Red campus stretchtek short with elastic drawstring and mid thigh hemline.

E 1105S A01

Competitive shirt shown in sublimated black, neon yellow and pewter on polytek with black techmesh back.

E 1817M COL 016

Black nylon/spandex shorts with elastic drawstring and upper thigh hemline.

F 1700MSO

Competitive shirt shown in true navy drytech.

F 1813M COL 180

White campus stretchtek pants with comfortable waistband and foot stirrups.

GKELITE.COM 1 800 345 4087

Sublimation

COMPETITIVE SHIRTS & WARM-UPS

Sublimation, or the process of printing directly on a fabric, offers the ability to create truly different and unique shirt and apparel options for each team. Whether you select an engineered print or go completely customized, GK can craft your perfect team look.





Engineered Sublimation

CREATE YOUR LOOK IN THREE SIMPLE STEPS

01 PICK A STYLE

Warm-Up

02 SELECT A PRINT

See pg. 57 for print swatches

03 CHOOSE COLORS

See pg. 56-57 for color swatches

04 ADD A BRAND

Location – Center Front | Center Back
Sublimated logo or team name – No Extra Charge

SBE/SBW Minimum: 12 piece on initial order
Sample Deposit Required: \$75 per warm-up jacket
sample, \$55 per warm-up bottom sample,
\$10 per blanket in lieu of sample
(non-refundable)



A SBE402 A01 NEW STYLE

Relaxed jacket in true navy drytech with red, white and navy sublimated on optic white and navy techmesh.

OPTIONS SHOWN: Team name on back within sublimation.

A SBE502 A01
Relaxed pants in true navy drytech with red, white, and navy sublimated on optic white.



B SBE402 A01 NEW STYLE

Relaxed jacket in graphite drytech with white and steel sublimated on optic white and white techmesh.

OPTIONS SHOWN: Team name on back within sublimation.

B SBE502 A01
Relaxed pants in graphite drytech with white and steel sublimated on optic white.

A SBE402 A01

Relaxed jacket in black drytech with black, white, red and carbon sublimation on optic white and black drytech techmesh.

OPTIONS SHOWN: Team name on back in sublimation.

A SBE502 A01

Relaxed pants in black drytech with black, white, red and carbon sublimation on optic white.

B SBE402 A01

Relaxed jacket in navy drytech with white, navy and royal sublimation on optic white with navy techmesh.

B SBE502 A01

Relaxed pants in navy drytech with white, navy and royal sublimation on optic white.

C SBE402 A01

Relaxed jacket in red hot drytech and blue ribbon, red and white sublimation on optic white.

OPTIONS SHOWN: Team name on back in sublimation.

C SBE502 A01

Relaxed pants in red hot drytech with blue ribbon, red and white sublimation on optic white.

D SBE402 A01

Relaxed jacket in royal drytech with navy, royal, yellow and midnight sublimation on optic white and navy techmesh

OPTIONS SHOWN: Team name on back in sublimation.

D SBE502 A01

Relaxed pants in royal drytech with navy, royal, yellow and midnight sublimation on optic white.

GKELITE.COM 1 800 345 4087



E SBE400 A01

Relaxed jacket in navy drytech with royal, blue ribbon, and midnight sublimation in optic white.

E SBE502 A01

Relaxed pants in navy drytech with royal, blue ribbon, and midnight sublimation in optic white.

F SBE400 A01

Relaxed jacket in carbon drytech with flannel gray, carbon, black, and white sublimation in optic white.

F SBE502 A01

Relaxed pants in carbon drytech with flannel gray, carbon, black, and white sublimation in inktek.

G SBE400 A01

Relaxed jacket in red hot drytech with candy apple, royal, white, and midnight sublimation in optic white.

G SBE502 A01

Relaxed pants in red hot drytech with candy apple, royal, white, and midnight sublimation in optic white.

H SBE400 A01

Relaxed jacket in black drytech with red, gray, and black sublimation in optic white.

H SBE502 A01

Relaxed pants in black drytech with red, gray, and black sublimation in optic white.

GKELITE.COM 1 800 345 4087

Custom Sublimation Design

Dreaming of a design that you haven't seen, yet? GK offers custom sublimation design services. With the help of a Sales Representative, GK will take your thoughts, ideas, and inspiration and turn it into the competitive apparel you're envisioning! There are infinite possibilities® when it comes to GK.

01 02 03
YOUR STYLE YOUR COLORS YOUR DESIGN

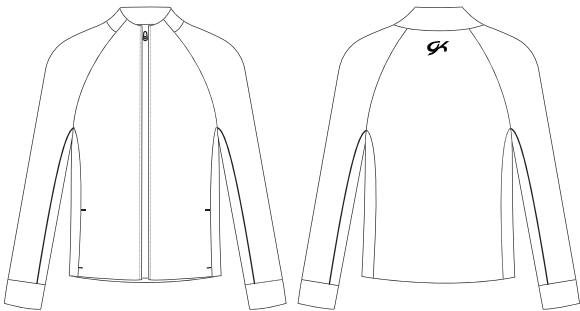
SBG Minimum: 12 pieces on initial order
Sample Deposit Required: \$75 per men's shirt sample, \$75 per warm-up jacket sample, \$55 per warm-up bottom sample, \$10 per blanket, in lieu of sample (non-refundable)

Featured designs are compliments of Gymnastics Olympia USA and Massachusetts Gymnastics Center

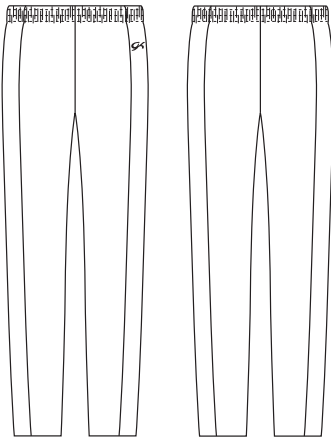




Warm-Ups

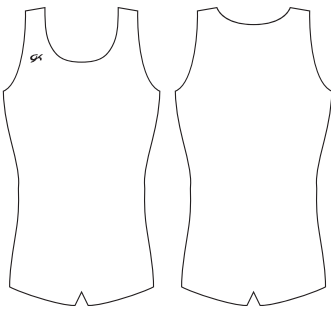


SBW304

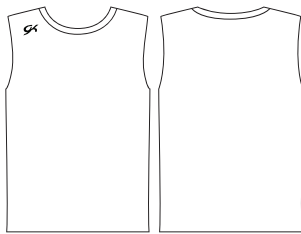


SBW406

Shirts



SBG400



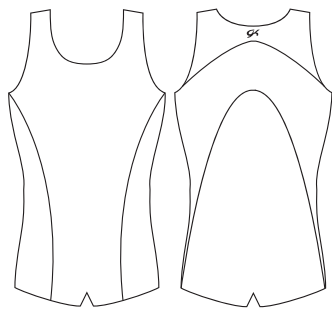
SBG401



SBG405



SBG406



SBG407



SBG408

Warm-Ups

JACKETS & PANTS

Complete your competition needs with Special Order warm-ups. With a large assortment of options, GK offers warm-ups for athletes and coaches.





A 8041 A01
Tailored fit jacket in carbon and royal drytech.
OPTIONS SHOWN: Two layer bridge laser on back in white and carbon drytech.

A 8254 A01
Tailored fit pants in carbon drytech.



B 8041 A01
Tailored fit jacket in red hot and black drytech.
OPTIONS SHOWN: One layer bridge laser on back in red hot drytech.

B 8254 A01
Tailored fit pants in black drytech.



C 8042 A01
Tailored fit quarter-zip pullover in graphite and white drytech.
OPTIONS SHOWN: One colored embroidery on right chest in grey thread.

C 8254 A01
Tailored fit pants in graphite drytech.

D 8042 A01
Tailored fit quarter-zip pullover in black and carbon drytech.
OPTIONS SHOWN: One color imprint on back in white film.

D 8254 A01
Tailored fit pants in black drytech.



A 8040 A01
Tailored fit jacket in true navy and white drytech.
OPTIONS SHOWN: One layer bridge laser on back in white drytech
A 8254 A01
Tailored fit pants in true navy drytech.

B 8040 A01
Tailored fit jacket in carbon and maroon drytech.
B 8254 A01
Tailored fit pants in carbon drytech.



C 8043 A01
Tailored fit quarter-zip pullover in maroon and black drytech with black techmesh kangaroo pocket.
C 8254 A01
Tailored fit pants in black drytech.
D 8043 A01
Tailored fit quarter-zip pullover in white and true navy drytech with white techmesh kangaroo pocket.
OPTIONS SHOWN: One layer bridge laser on back in red hot drytech
D 8254 A01
Tailored fit pants in true navy drytech.

In-Stock Competitive Apparel

READY TO SHIP

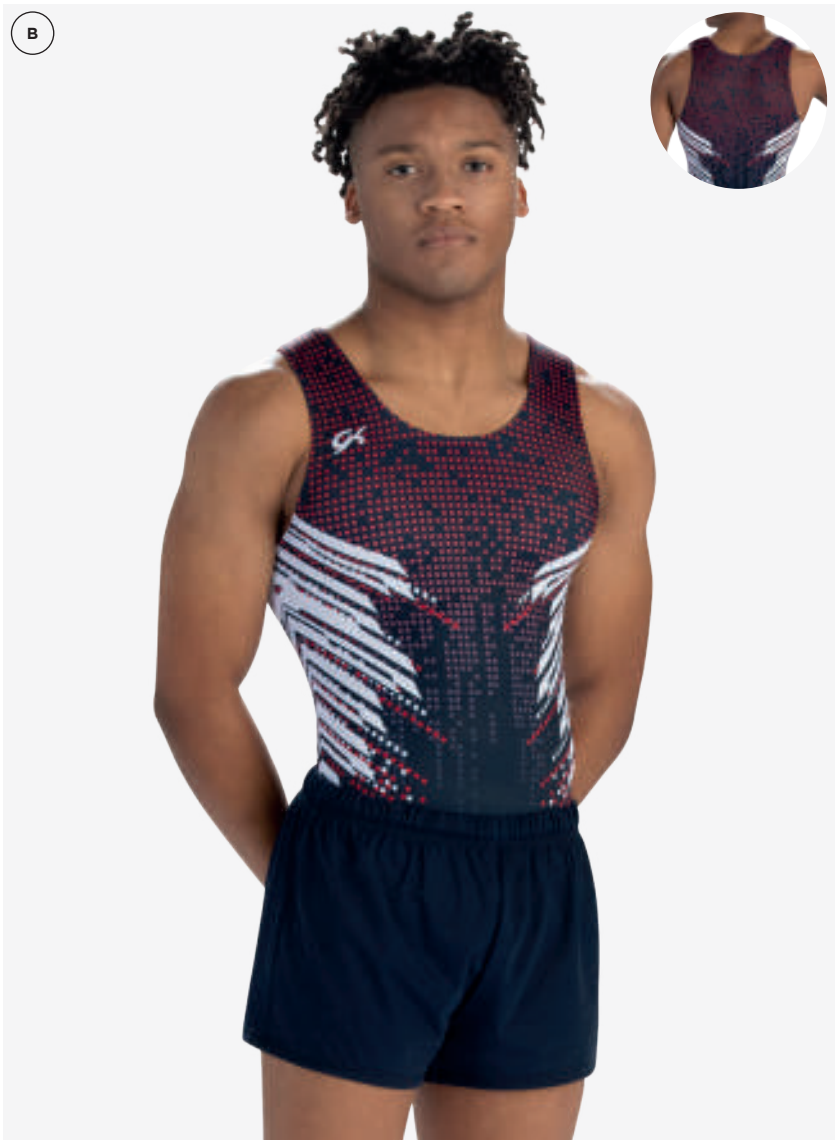
GK offers a full line of shirts, shorts, pants & warm-ups that are ready to ship. Available for purchase as shown, or with optional embellishment additions. GK stock apparel can outfit your team when you need it quick!





A 1895M
Sublimated competitive shirt on polytek with boycut leg.
Style coordinates with Special Order style 1138S.

A 1812M **y06**
Steel campus stretchtek short with elastic drawstring and mid thigh hemline.



B 1893M
Sublimated competitive shirt on polytek with boycut leg.
Style coordinates with Special Order style 1135S.

B 1812M **col 116**
Navy campus stretchtek short with elastic drawstring and upper thigh hemline.



C 1894M
Sublimated competitive shirt on polytek with boycut leg.
Style coordinates with Special Order style 1136S.

C 1813M **col y06**
Steel campus stretchtek pants with comfortable, yet secure, waistband and stirrups.



D 1896M
Sublimated competitive shirt on polytek with boycut leg.
Style coordinates with Special Order style 1137S.

D 1812M **col 016**
Black campus stretchtek short with elastic drawstring and upper thigh hemline.



A 1891M
Sublimated competitive shirt on polytek with boycut leg.
OPTIONS SHOWN: This style is also available as Special Order. Please use style 1128S.

A 1812M **COL 116**
Navy campus stretchtek shorts with elastic drawstring waist and upper thigh hemline.



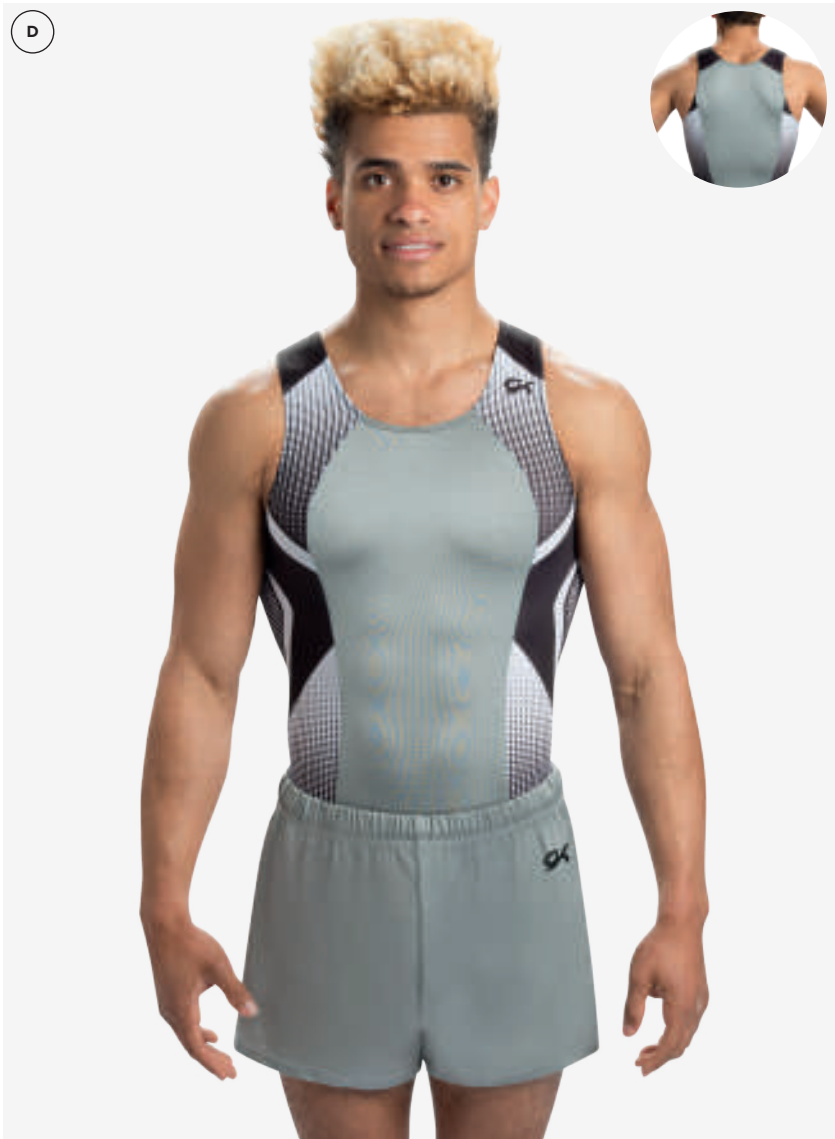
B 1892M
Sublimated competitive shirt on polytek with boycut leg.
OPTIONS SHOWN: This style is also available as Special Order. Please use style 1125S.

B 1812M **COL Y06**
Steel campus stretchtek shorts with elastic drawstring waist and upper thigh hemline.



C 1887M
Sublimated competitive shirt on polytek with navy campus performance mesh and boycut leg.

C 1811M **COL 116**
Navy campus stretchtek shorts with elastic drawstring waist and mid thigh hemline.



D 1883M
Sublimated competitive shirt on polytek with steel nylon/spandex and boycut leg.
OPTIONS SHOWN: This style is also available as Special Order. Please use style 1110S.

D 1818M **COL Y06**
Steel nylon/spandex shorts with elastic drawstring waist and mid thigh hemline.



A 1855M
Sublimated vertical draped flag design in red, white, and blue polytek. Shirt features white base with USA on left side body. GK logo on upper left chest.

A 1812M COL 152
Red campus stretchtek shorts with elastic drawstring waist and upper thigh hemline.



B 1880M
Sublimated competitive shirt on white polytek with boy-cut leg.

B 1817M COL 160
Royal nylon/spandex shorts with elastic drawstring waist and upper thigh hemline.



C 1878M
Sublimated competitive shirt on polytek with navy campus performance mesh and boy-cut leg.

C 1817M COL 116
Navy nylon/spandex shorts with elastic drawstring waist and upper thigh hemline.



D 1888M
Sublimated competitive shirt on polytek with black techmesh and boy-cut leg.

D 1813M COL 152
Red campus stretchtek pants with comfortable, yet secure, waistband and stirrups.



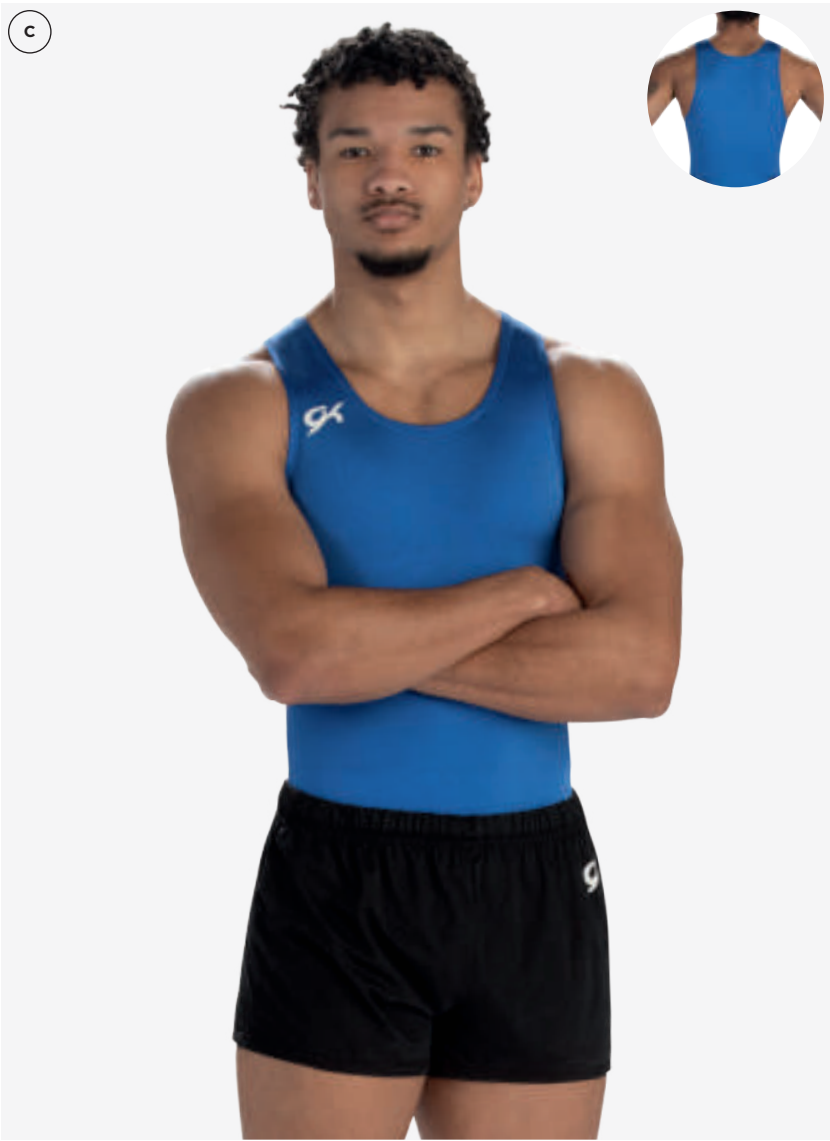
A 1889M
Sublimated competitive shirt on polytek with boycott leg.

A 1812M **COL 180**
White campus stretchtek shorts with elastic drawstring waist and upper thigh hemline



B 1879M
Sublimated competitive shirt on polytek with white techmesh, black techmesh, red nylon/spandex, black nylon/spandex, red campus performance mesh and boycott leg.

B 1817M **COL 152**
Red nylon/spandex shorts with elastic drawstring waist and upper thigh hemline.



C 1832M **COL 160**
Competitive shirt in royal nylon/spandex and boycott leg.

ALSO AVAILABLE: 016 black, 116 navy, and 152 red

C 1817M **COL 016**
Black nylon/spandex shorts with elastic drawstring waist and upper thigh hemline.



D 1700M **COL 016**
Black drytech compression shirt featuring flat lock seams for comfort.

OPTIONS SHOWN: This style is also available as Special Order. Please use style 1700MSO.

D 1812M **COL 152**
Red campus stretchtek shorts with elastic drawstring waist and upper thigh hemline.



Warm-Ups

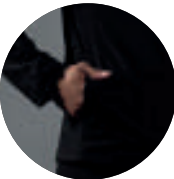
FUNNEL COLLAR



FULL LENGTH ZIPPER



SECURE ZIPPER POCKETS



A 1786

Relaxed fit men's warm-up jacket in black drytech.



B L1191

Relaxed men's warm up jacket in black heavyweight stretch woven and black textured stretch woven-lightweight featuring a modern funnel collar and pockets.

OPTIONS SHOWN: Team name on upper back in white imprint.



A L1192
Relaxed men's warm-up pants in black heavy weight stretch woven, black rib and black textured stretch woven jogger style pants.



B 1787
Relaxed fit men's warm-up pants in black drytech.



C 1846M
NYLON/SPANDEX PANTS
Nylon/spandex pants with comfortable, yet secure, waistband and stirrups.

E 1818M
NYLON/SPANDEX LONG SHORTS
Nylon/spandex shorts with elastic drawstring waist and mid thigh hemline.

- Y06 | Steel

016 | Black

180 | White
- 152 | Red

116 | Navy

160 | Royal



D 1813M
CAMPUS STRETCHTEK PANTS
Campus stretchtek pants with comfortable, yet secure, waistband and stirrups.

F 1817M
NYLON/SPANDEX SHORTS
Nylon/spandex shorts with elastic drawstring waist and upper thigh hemline.

- Y06 | Steel

016 | Black

180 | White
- 152 | Red

116 | Navy

160 | Royal



G 1811M
CAMPUS STRETCHTEK LONG SHORTS
Campus stretchtek shorts with elastic drawstring waist and mid thigh hemline.

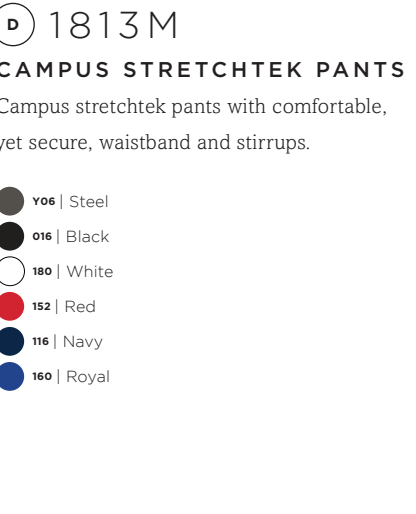
- Y06 | Steel

016 | Black

180 | White
- 152 | Red

116 | Navy

160 | Royal



H 1812M
CAMPUS STRETCHTEK SHORTS
Campus stretchtek shorts with elastic drawstring waist and upper thigh hemline.

- Y06 | Steel

016 | Black

180 | White
- 152 | Red

116 | Navy

160 | Royal

Options & Information

FABRICS, NAME OPTIONS & MORE

Once you've found a style you like, the real fun begins! With the most expansive selection of fabrics in the industry, GK will have the colors and the options you want.



FABRIC OPTIONS AND COLORS

GK offers fabrics that are produced to meet our exclusive stretch and quality standards. GK takes tremendous pride in having the best fabrics in the industry. As the leader in performance apparel, it's important for us to advise you of the tendencies of certain fabrics, as well as practices to avoid.

OUR MEN'S FABRICS ARE LONG WEARING AND DURABLE:

Long wearing, durable fabrics include: Nylon/Spandex, Campus Stretchtek, Campus Performance Mesh, DryTech, and Techmesh.

Note that DryTech may shrink when heat is applied.

FABRIC CARE AND USE:

- Repeated wear and washing may cause the fabrics to fade.
- Alcohol in all aerosol products, such as hairspray, affect these fabrics. Please cover garment before applying. Perfumes and body lotions can also affect fragile fabrics.
- Deodorants and perspiration may cause these fabrics to color bleed or fade. We recommend the use of a pure crystal deodorant which does not contain Aluminum Chlorohydrate.
- Color transference or color bleed occurs when a white or light color fabric is combined with a bright or dark color fabric. This is a common industry problem and can become more obvious under certain conditions, especially when a light color garment is worn under a dark warm-up or shorts, and/or when damp garments are left in gym bags. It is impossible for Elite Sportswear to guarantee that our fabrics will not bleed, even by following proper washing instructions, due to the individual nature of each athlete's wear/washing procedure. You are free to order any fabric and color combination, but please do so with great discretion. If you choose to combine light and dark colors, Elite Sportswear will not be responsible for replacing your garment(s) if color bleed occurs.

IMPORTANT WASHING INSTRUCTIONS FOR ALL FABRICS

Garment(s) must be washed separately. Turn garment inside out. Use a mild liquid detergent, gently hand wash in a large volume of cold water. Rinse immediately, DO NOT allow garment to soak. Pat dry with a clean towel and use a thick plastic hanger to air dry. DO NOT use fabric softeners. Fabric softeners negatively affect the adhesives used in our garments, causing the foil on our fabrics to discolor and the embellishments to fall off. DO NOT BLEACH. DO NOT dry clean. Dry cleaning uses harsh chemicals that can damage the fabric finishes and embellishments used in our garments. DO NOT iron. The heat from an iron can melt and/or discolor the delicate fabrics in our garments. Excessive heat can also weaken the adhesives used to attach the embellishments to the garment and cause them to fall off. All of our prices and materials reflect Elite Sportswear's commitment to offer consistently high standards in quality at the lowest possible price. However, continued increases/changes in raw materials, utilities, labor, etc. subject us to price changes beyond our control. Therefore, prices and materials are subject to change without notice.

GK is committed to providing the very best sublimation processes in the industry. We work with our fabric vendors and sublimation ink suppliers to continually improve the outcome of our sublimated garments. These improvements may affect the sublimated colors on reorders, as we continue to advance our sublimated techniques. Due to the nature of the sublimation process, GK will match the color on reorders to the best of our ability, but cannot guarantee a perfect match. Be mindful that wear and washing throughout the season will affect the color saturation in your garment. Reorders will be processed based off the artwork and colors used in the original production order, and may not match the garments already in use.

DRYTECH 92% Micropoly/8% Lycra® LONG WEARING, DURABLE FABRIC Available in binding and piping.

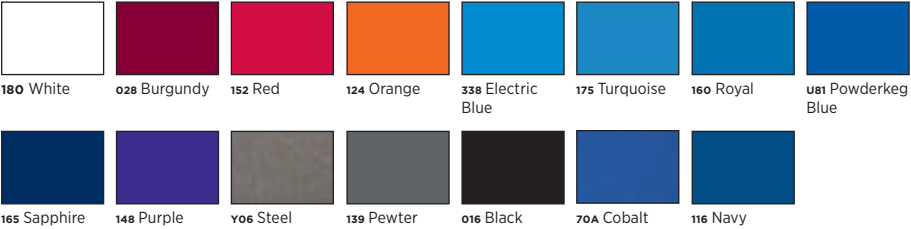


SUBLIMATION COLORS 80% Nylon/20% Spandex LONG WEARING, DURABLE FABRIC Available in binding and piping.



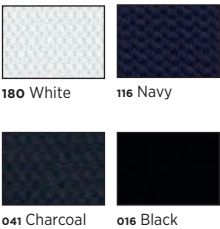
180 White

NYLON/SPANDEX 80% Nylon/20% Spandex LONG WEARING, DURABLE FABRIC Available in binding and piping.



TECHMESH 80% Nylon/20% Spandex

LONG WEARING DURABLE FABRIC
Also available in piping and binding.



POLYTEK 80% Nylon/20% Spandex



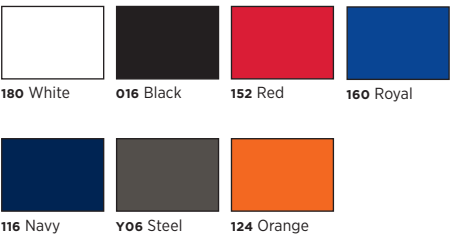
180 White

PRIMATEX 80% Nylon/20% Spandex



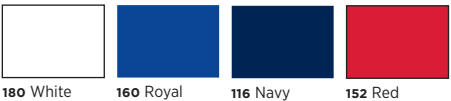
CAMPUS STRETCHTEK

LONG WEARING DURABLE FABRIC



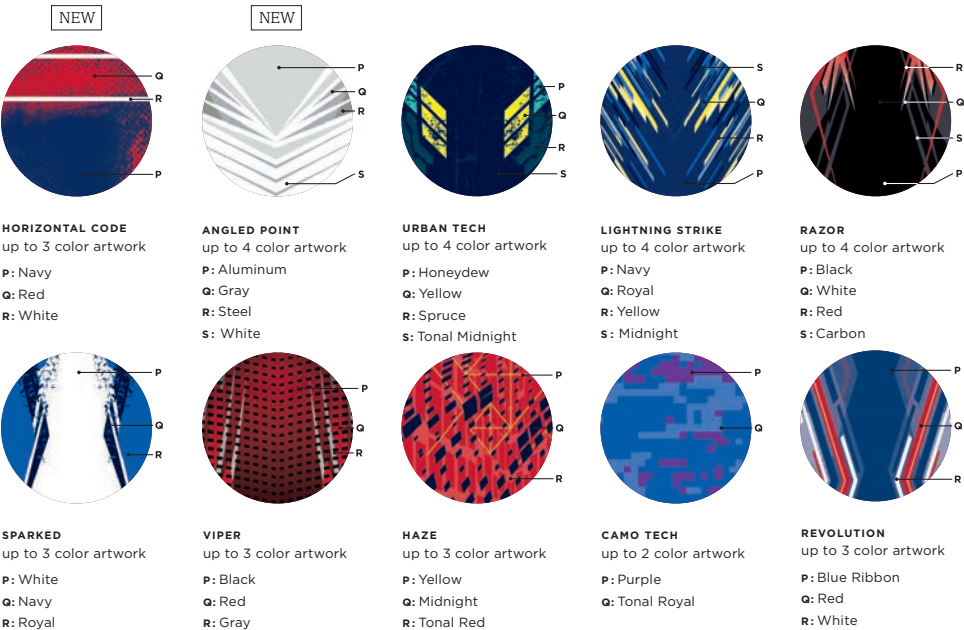
CAMPUS PERFORMANCE MESH

LONG WEARING DURABLE FABRIC



ENGINEERED SUBLIMATION

SELECT YOUR STYLE, THEN PICK ONE OF THE ENGINEERED SUBLIMATION PRINTS BELOW TO GET STARTED.



DISCONTINUED COLORS:

(available through June 1, 2022 for reorders only)

NYLON/SPANDEX

824 Magenta
192 Sangria

HEAVY WEIGHT NYLON/SPANDEX

180 White

TECHMESH

152 Red
175 Turquoise

CUSTOM EMBELLISHMENT OPTIONS

Embroidery



example in white

EMBROIDERY PRICING & FEES:

3" X 3"	\$7.00
6" X 3"	\$10.00
5" X 5"	\$14.00
7" X 3"	\$14.00
9" X 4"	\$18.00

 180 White	 483 Yellow	 78A Seaglass	 100 Lilac	 18A Cheeky Pink
 152 Red	 854 Neon Yellow	 096 Light Blue	 178 Violet	 17A Ruby Glint
 124 Orange	 488 Lime Green	 175 Turquoise	 110 Maroon	 810 Silver (Non Metallic)
 77A Neon Orange	 065 Forest Green	 160 Royal	 128 Orchid	 076 Grey
 068 Gold (Non Metallic)	 X65 Emerald Green	 116 Navy	 J81 Wild Pink	 016 Black
 069 Gold Glimmer	 170 Teal	 148 Purple	 Y07 Flamingo	

Imprinting

NO SET-UP FEES!



example in metallic blue

1 COLOR IMPRINTING:

PRICE: \$11.00.

Choose from the following stock colors.

 180 White	 U57 Gold Prism	 U53 Glitter Blue	 U51 Glitter Pink	 U58 Silver Prism
 U50 Glitter White	 854 Neon Yellow	 U63 Neon Blue	 850 Neon Pink	 016 Black
 U61 Metallic Red	 U56 Glitter Yellow	 U59 Metallic Blue	 U64 Neon Coral	
 852 Neon Orange	 U52 Glitter Green	 U60 Metallic Wysteria	 U65 Neon Raspberry	
 U55 Glitter Orange	 N43 Neon Green	 U54 Glitter Purple	 U62 Metallic Magenta	

*Stock imprinted logo samples are available upon request. Custom imprinted logo samples are not available.

Imprintz™

Multi-colored printed logo



PRICING PER LOCATION:

SMALL (UP TO 3"X6"):

\$10.00

MEDIUM (UP TO 6"X6"):

\$15.00

LARGE (UP TO 8"X8"):

\$20.00

X-LARGE (UP TO 8"X10"):

\$25.00

 Y28 Red	 Y21 Gold	 Y57 Bright Turquoise	 Y36 Purple	 Y31 Pink
 Y25 Cosmo	 Y22 Yellow	 Y40 Columbia Blue	 Y56 Ultra Violet	 Y61 Berry
 Y32 Cherry	 Y58 Key Lime	 Y34 Electric Blue	 Y35 Wisteria	 Y59 Aluminum
 Y26 Candy Apple	 Y47 Kelly	 Y42 Royal	 Y02 Cardinal	 Y48 Gray
 Y24 Coral	 Y46 Evergreen	 Y38 Sapphire	 Y63 Wildberry	 Y49 Flannel Gray
 Y52 Brown	 Y03 Teal	 Y04 Blue Ribbon	 Y34 Sangria	 Y60 Pewter
 Y23 Orange	 Y45 Spruce	 Y37 Navy	 Y29 Crimson	 Y50 Carbon
 Y20 Vegas Gold	 Y44 Turquoise	 Y39 Midnight	 Y33 Fuchsia	 Y51 Black

SIZING INSTRUCTIONS

Sizing Instructions

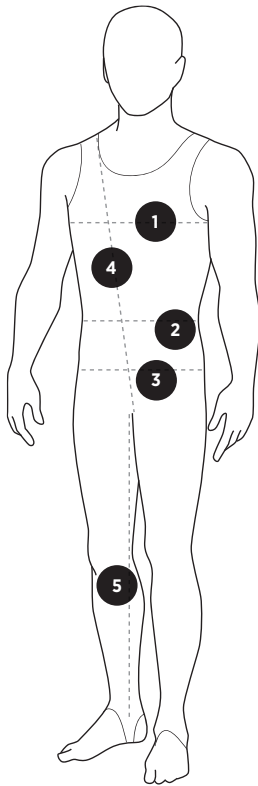
At GK, years of pattern development have taught us that the most accurate way to ensure proper fit is to rely on body measurements. An individual's perception of fit may vary greatly; however, the GK Fit is scientifically engineered to move with the athlete for optimal performance. Measuring athletes takes the guess work out of selecting their size. It is quick, easy, reliable, and helps to achieve a similar fit for all team members. The fit and feel of a garment will vary significantly based on the fabric type and embellishments used on the garment. To continue to provide the "GK fit" we use our size charts when ordering garments.

The following size charts have been thoroughly evaluated to ensure that taking accurate athlete measurements will result in the correct size being ordered. To select the correct size, reference the appropriate GK size chart for the style being ordered to determine which size best corresponds to the athlete's measurements. When an athlete's measurement contains a partial inch, always round up to the next full inch. If an athlete's measurements fall across two sizes, order the larger size. For more clarification, contact your sales rep or our customer service department. Remember, special order items are not returnable.

How to Measure

The goal of measuring is to determine the correct size to order for each athlete. Accurate measurements are vital to the proper fit of your athlete's apparel. Please make sure that all athletes are wearing fitted workout apparel during the measuring session.

- CHEST MEASUREMENT:** Measure the chest of the athlete while their arms are down at their sides and at the fullest part of the chest. Your measuring tape should always be parallel to the floor while taking the measurement.
- WAIST MEASUREMENT:** When measuring the waist, wrap the tape at the natural waistline which is the narrowest part of the waist. If you are having trouble locating the natural waist, have the athlete bend to the side. The natural waist is where the body bends. Again, the measuring tape should always be parallel to the floor while taking the measurement.
- HIP MEASUREMENT:** Take the hip measurement at the fullest part of the buttocks with the athlete's feet together. Ensure that the tape measure is parallel to the floor.
- TORSO MEASUREMENT:** Take the torso measurement from the center of the shoulder, down the torso, through legs, and back to the shoulder. This is the most important measurement.
- INSEAM MEASUREMENT:** The length of the leg from the crotch to one inch above the floor. Measure the athlete without shoes.



GROWING ROOM: GK uses 4 way stretch fabrics that have minimal shrink and exceptional stretch. THE FABRIC SHOULD FIT SNUG TO THE BODY AND NOT BE LOOSE. GK does not recommend up-sizing to allow for growing room. The fabric will stretch with the athlete while they grow.

SIZE CHARTS

Special Order Sizes For Men's Competitive Wear

ADULT: XS - S - M - L - XL - 2XL - 3XL - 4XL
CHILD: XS - S - M - L - XL

Special Orders can now be placed by mail, fax, phone or online, using UDESIGN360 If placing your order by phone, please be prepared to finalize your order by providing your payment information.

BOY'S/MEN'S SIZE CHART IN INCHES							
SIZE	CHEST	WAIST	HIP	TORSO	LONG TORSO OPTIONS*	SHORT TORSO OPTIONS*	INSEAM
CXS	23-25	21-22	23-25	37-42	39-44	35-40	18
CS	25-27	22-23	24-26	40-45	42-47	38-43	20
CM	26-28	23-24	25-28	43-48	45-50	41-46	22
CL	29-31	25-26	29-32	46-51	48-53	44-49	25
CXL	32-34	27-28	33-36	49-54	51-56	47-52	28
AXS	34-36	26-27	32-34	52-57	54-59	50-55	26
AS	36-38	28-29	34-35	55-60	57-62	53-58	28
AM	38-40	30-31	35-36	58-63	60-65	56-61	30
AL	40-42	32-33	36-37	61-66	63-68	59-64	32
AXL	42-44	34-35	37-39	64-69	66-71	62-67	34
A2XL	44-46	36-37	38-40	67-72	69-74	65-70	36
A3XL	46-48	38-39	39-41	70-75	72-77	68-73	38
A4XL	48-50	40-41	40-42	73-78	75-80	71-76	40

Special Order Sizes For Men's Warm-Ups

ADULT: XS - S - M - L - XL - 2XL - 3XL
CHILD: XXS - XS - S - M - L

RELAXED WARM-UP JACKET & MEN'S PANTS					
ADULT SIZES					
SIZE	CHEST	WAIST	HIP	INSEAM	
AXS	31-34	27-29	30-32	30	
AS	34-36	30-31	32-34	31	
AM	36-38	32-33	34-36	32	
AL	38-40	34-35	36-38	33	
AXL	40-42	36-37	38-40	33	
A2XL	42-44	38-39	40-42	33	
A3XL	44-46	40-41	42-44	33	

*Long and Short torso options available for an additional cost and not available on stock apparel

** Select styles are offered in CXXS

RELAXED WARM-UP JACKET & BOY'S PANTS					
CHILD SIZES					
SIZE	CHEST	WAIST	HIP	INSEAM	
CXXS**	20-22	21-22	20-22	19	
CXS	22-24	22-23	22-24	21	
CS	24-26	23-24	24-26	23	
CM	26-28	24-25	26-28	25	
CL	28-31	25-26	28-30	28	

Elite Sportswear believes all of us have an inherent responsibility to be careful stewards of our environment. Together, we can improve the sustainable use of our natural resources. Please consider returning your hangers to us as well as recycling your catalogs. Contact your local municipality for recycling guidelines. Printed in USA. For GK's web policy, go to www.gkelite.com or contact GK for the policy in writing.

ADDITIONAL INFORMATION

GK Men's Competitive Wear

GK offers more styles, fabrics and colors to give you more variety than any other manufacturer. Pricing for all fabric combinations can be found in the Men's Competitive Price List or to view your pricing online, go to www.gkelite.com and log in to view your team pricing.

ORDERING INFORMATION

Special Orders can now be placed by mail, phone or online, using UDESIGN360. If placing your order by phone, please be prepared to finalize your order by providing your payment information.

ESTIMATED PRODUCTION TIME

Production times are estimated and subject to change due to the daily volume of orders we receive. Ship weeks are assigned based on receipt of your complete, accurate, and approved order and your required deposit. Production will not begin and a ship week will not be assigned until the order deposit has been received. For current production times, prior to placing your order, call 1-800-345-4087 or visit our website at www.gkelite.com. Estimated production times do not include delivery time to your location. Please allow additional time for delivery. Complete and accurate orders received during non-business hours will be dated for the next business day.

* Embellishments may require additional production time. Custom designs will require additional time due to the complexity of the custom design process. If payment for the balance of your order is not received at least seven days prior to your planned ship date, your order will be delayed.

RUSH SERVICE

Rush service may be available on all styles for a 25% rush fee and priority shipping. Prior authorization is required by GK.

Please call customer service for more information.

Programs

EARLY BUY DISCOUNT

Contact your local Sales Representative to learn about the GK Early Buy Program.

SAMPLE APPAREL PROMO

GK offers a FREE sample apparel program, so you can try your apparel before placing your team order.

SUBLIMATION

GK provides the highest quality sublimation to develop your own custom look.

Partners

SUPPORTS YOUR SPORT

GK is passionate about the sport of gymnastics and supporting all hardworking athletes. For over 35 years, GK has been outfitting teams with the best fitting apparel in the world. GK truly is the Choice of Champions with an amazing roster of athletes including Simone Biles, Laurie Hernandez, Katelyn Ohashi, Sam Mikulak, and Yul Moldauer. GK is also honored to outfit some of the best National Teams world wide including being the official partner of USAG, Gymnastics Canada, Gymnastics Australia and so many more!

Products

DESIGNED IN THE USA

GK has been the leader in gymnastics apparel for over 35 years and manufacturers and sells more gymnastics apparel than any other company in the world. We are proud that our products are designed in the USA.

QUALITY

GK systematically monitors and evaluates the fit, fabrics and embellishments of each and every garment that leaves our facility, so you receive the very best gymnastics products.

FIT

We pride ourselves in manufacturing the best fitting gymnastics apparel in the world.

CUSTOMER SERVICE

GK has the largest customer service and outside sales force in the industry devoted solely to the sport of gymnastics.

VARIETY

GK has the largest selection of in stock gymnastics garments, including team apparel that coordinate your practice and competitive wear.

RELIABLE DELIVERY

GK manufactures locally, so we can ship your competitive apparel on time, every time.

VISIT GKELITE.COM TODAY!

Design & Buy With UDesign360®

- › New styles have been added!
- › Select your styles, fabrics, embellishments, and more and see your competition shirt design come to life!
- › UDesign360 is available on desktop, tablet and mobile
- › Save and share your design with your team

STOCK STYLES ALSO AVAILABLE!

- › With real time availability and inventory, gkelite.com has everything you need. From competition shirts and bottoms, to apparel, to accessories you can quickly find and buy what you need to outfit your team!

Need Assistance?

Contact our Customer Engagement team or your GK Sales Representative to help you place your order!

- › 1-800-345-4087 or custserv@gkelite.com
- › Find a Sales Rep: gkelite.com/pages/gk-gym-us-sales-team

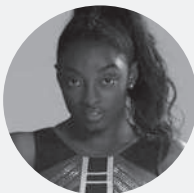


GK would like to thank all the gymnastics centers and athletes that helped make this collection and catalog possible.

World Champions Centre – Spring, TX
Arizona Sunrays – Phoenix, AR
Prestige Gymnastics – Lancaster, PA
Parkettes Gymnastics – Allentown, PA
Hill's Gymnastics - Gaithersburg, MD
Temple University Men's Gymnastics Team – Philadelphia, PA



GK is proud to be worn by some of the biggest names in gymnastics. Check out Team GK at gkelite.com



Simone Biles



Laurie Hernandez



Katelyn Ohashi



Sam Mikulak



Yul Moldauer



ELITE SPORTSWEAR
1.800.345.4087

GKELITE.COM



GM21-X21