



2022 MEN'S
COMPETITIVE
& IN STOCK



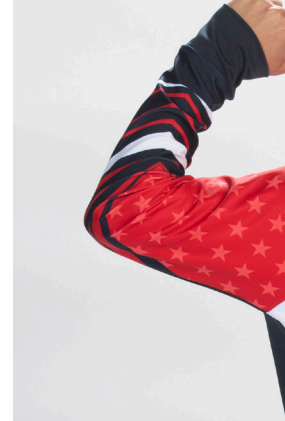


The sport of gymnastics, the athlete, and the team are ever-changing. Through evolving attitudes, changing outlooks, and powerful transformations, individual and collective journeys are created. As growth occurs both inside and outside the gym, GK is here to support goals, challenges, and victories.

EMBRACE THE JOURNEY.

EMBRACE THE EVOLUTION.

EMBRACE.



EMBRACE.





MEN'S COMPETITIVE + IN STOCK

As the worldwide leader in gymnastics apparel, and trusted by top athletes globally, GK embraces every aspect of the sport of gymnastics. From the athletes to the coaches, to the team, we truly understand the sport and what it takes for an athlete to perform at their best. That's why you are at the forefront of everything we do.

Your competitive apparel journey starts here. GK creates incredible apparel pieces with you in mind, but there are infinite possibilities® in outfitting your team. With guidance from a dedicated GK Sales Representative, we can tailor competitive gear so it is unique to your program. Nothing is impossible with our wide selection of Special Order, Custom & Stock design options.

And while our designs are evolving, you can always count on the iconic GK fit. We hold every vendor and selected fabrics and embellishments to the highest standards to ensure our apparel fits just right. Paired with unsurpassed, hand-made construction and quality, be assured your GK garments will look, feel, and fit the best.

TABLE OF CONTENTS

SPECIAL ORDER

06	Special Order Competitive Apparel
24	Special Order Warm-Ups
28	Special Order Competitive Sublimation
30	Special Order Engineered Sublimation
34	Special Order Custom Sublimation



YUL MOLDAUER
TEAM GK ATHLETE
2020 OLYMPIAN

A full-body photograph of Shane Wiskus, a male athlete, standing against a light gray background. He is wearing a dark blue sleeveless singlet with white horizontal stripes and a white GK logo on the upper left chest. He is also wearing light gray athletic shorts with a white GK logo on the lower right leg. He has short, light brown hair and is looking directly at the camera.

SHANE WISKUS
TEAM GK ATHLETE
2020 OLYMPIAN

IN STOCK

38 In Stock Competition Apparel

48 In Stock Warm-Ups

51 In Stock Pants & Shorts

54 In Stock Accessories

56 Embellishments & Fabrics

61 Sizing Instructions & Charts

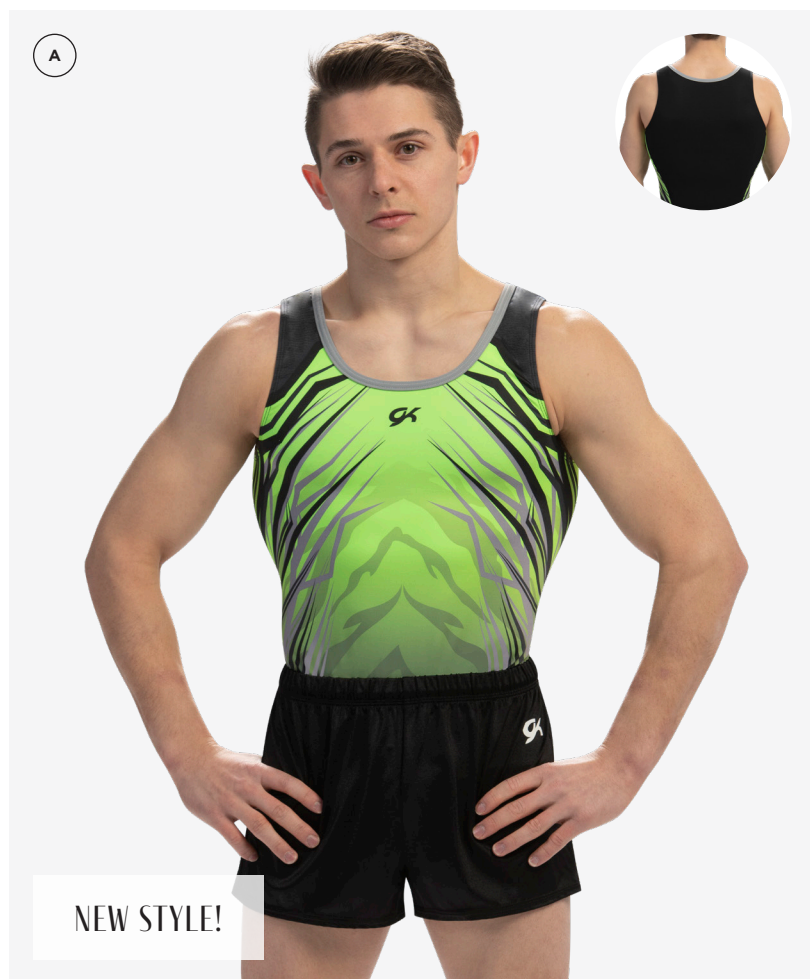
SPECIAL ORDER

COMPETITIVE APPAREL

SHIRTS, SHORTS, & PANTS

Known for exceptional fit and strong designs, GK Special Order Competitive Apparel allows you to choose a unique competitive shirt design, then customize it by selecting your colors and adding a name or logo.





(A) 1139S A02

Competitive shirt with black, key lime and carbon sublimated on polytek with black techmesh and steel campus stretchtek.

(A) 1812M 016

Black campus stretchtek short with elastic drawstring and upper thigh hemline.

(B) 1139S A01

Competitive shirt with midnight, white, blue ribbon and red sublimated on polytek with red campus performance mesh and navy campus stretchtek.

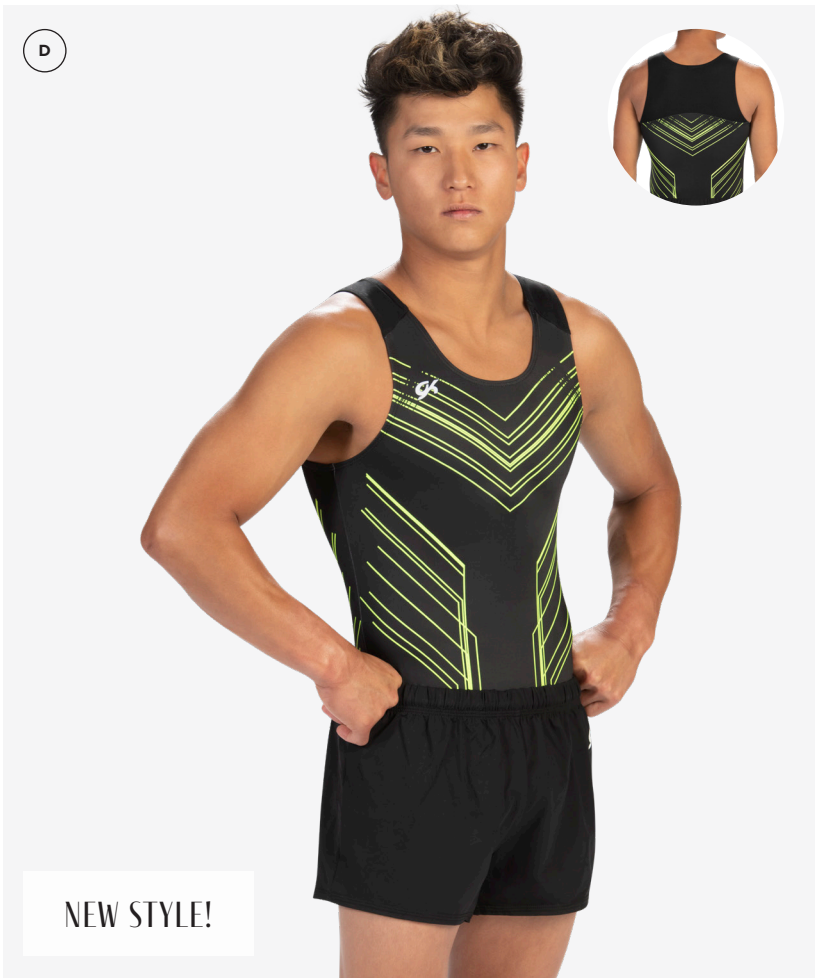
(B) SBG410 A01

Short in custom sublimation on polytek with navy campus stretchtek.

OPTIONS SHOWN: Custom sublimation on side panels.

GKELITE.COM 1 800 345 4087





C 1140S A01

Competitive shirt with navy, white and steel sublimated on polytek with white campus performance mesh.

C 1813M 180

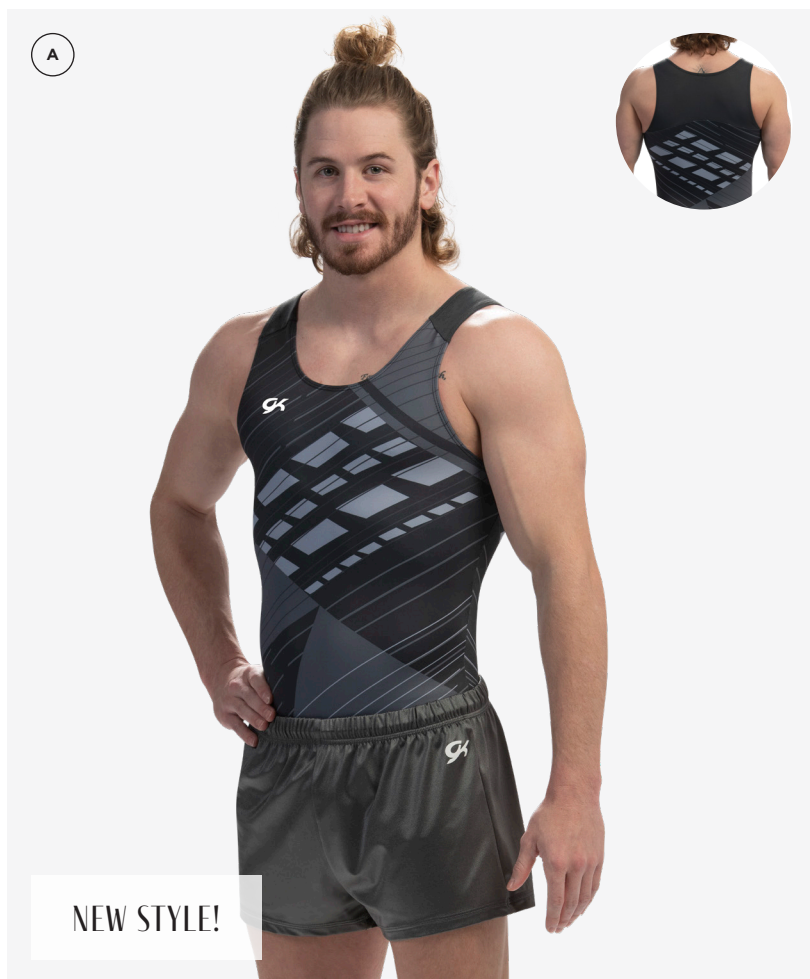
White campus stretchtek pants with comfortable waistband and foot stirrups.

D 1140S A02

Competitive shirt with black and neon yellow sublimated on polytek with black techmesh.

D 1812M 016

Black campus stretchtek short with elastic drawstring and upper thigh hemline.



A 1141S A02

Competitive shirt with carbon, gray and flannel gray sublimated on polytek with charcoal techmesh.

A 1817 A01

Pewter nylon/spandex shorts with elastic drawstring and upper thigh hemline.

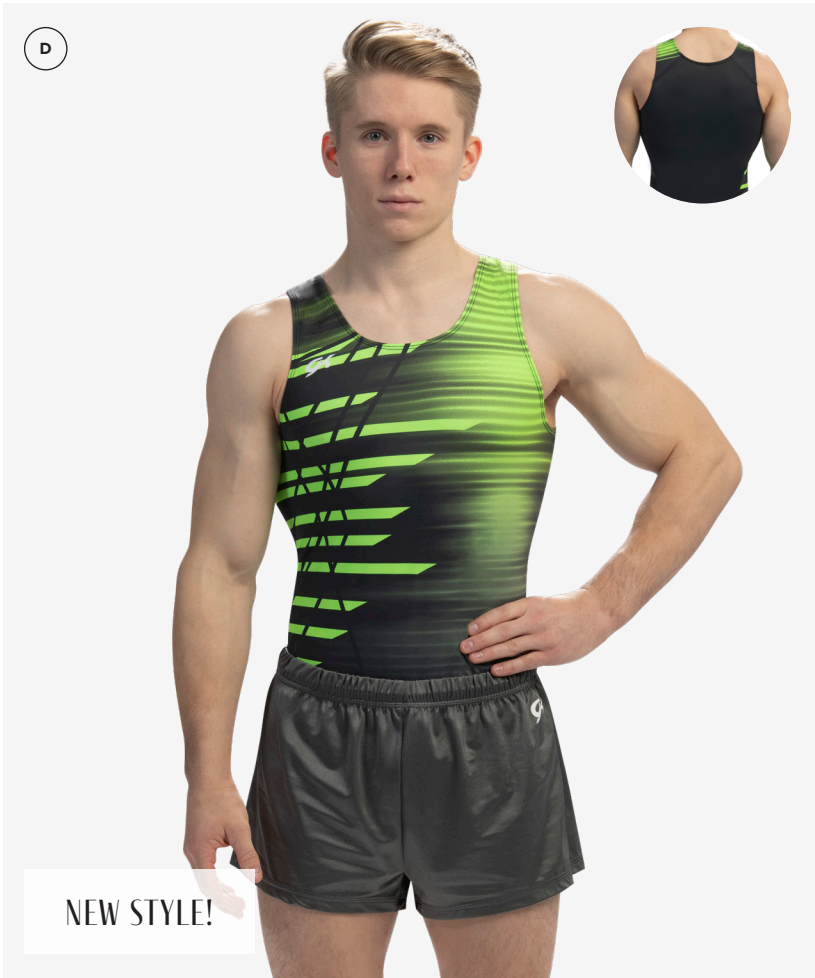
B 1141S A01

Competitive shirt with orange and midnight sublimated on polytek with navy campus performance mesh.

B SBG409 A01

Pant in custom sublimation on polytek with orange campus stretchtek, flat front without pintuck seam. **OPTIONS SHOWN:** Custom sublimation on side panels, with team name.



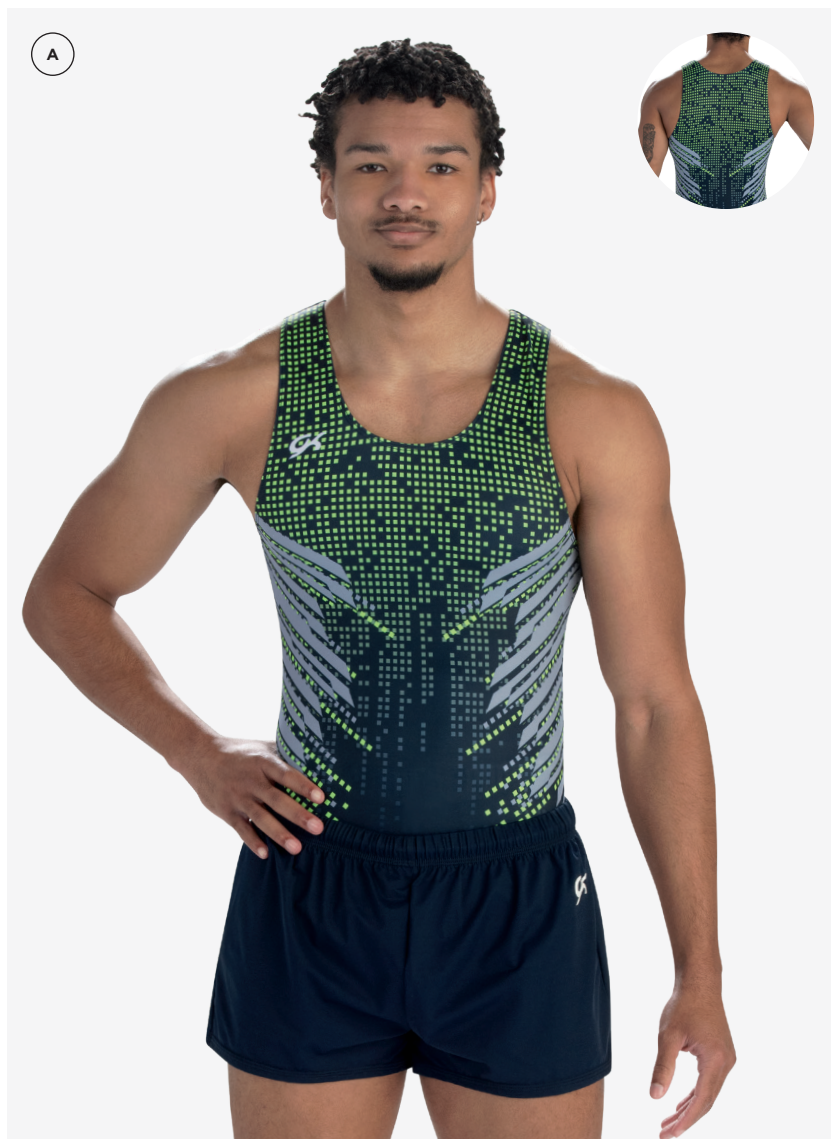


C 1142S A01
Competitive shirt with crimson and white sublimated on polytek with white campus performance mesh.

C 1846 A01
Burgundy nylon/spandex pants with comfortable waistband and foot stirups. Features flat front without pin tuck seam.

D 1142S A02
Competitive shirt with carbon and key lime sublimated on polytek with charcoal techmesh.

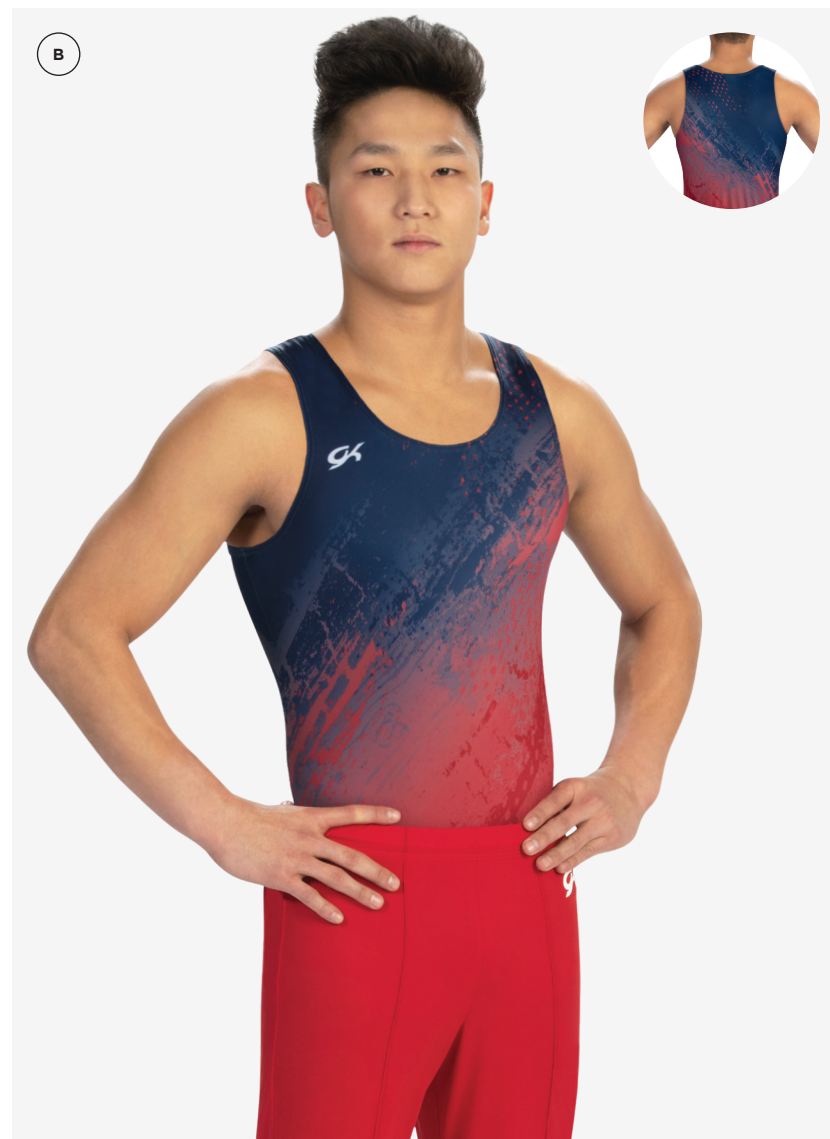
D 1817 A01
Pewter nylon/spandex shorts with elastic drawstring and upper thigh hemline.

**A 1135S_{A01}**

Competitive shirt with key lime, midnight, and gray sublimated on polytek.
Style coordinates with stock style 1893M.

A 1812M₁₁₆

Navy campus stretchtek short with elastic drawstring and upper thigh hemline.

**B 1138S_{A01}**

Competitive shirt with navy and red sublimated on polytek.
Style coordinates with stock style 1895M.

B 1813M₁₅₂

Red campus stretchtek pants with comfortable waistband and foot stirrups.



C 1136S **A01**

Competitive shirt with pewter, black, and purple sublimated on polytek.
Style coordinates with stock style 1894M.

OPTIONS SHOWN: Team name on front within sublimation.

C 1812M **016**

Black campus stretchtek short with elastic drawstring and upper thigh hemline.

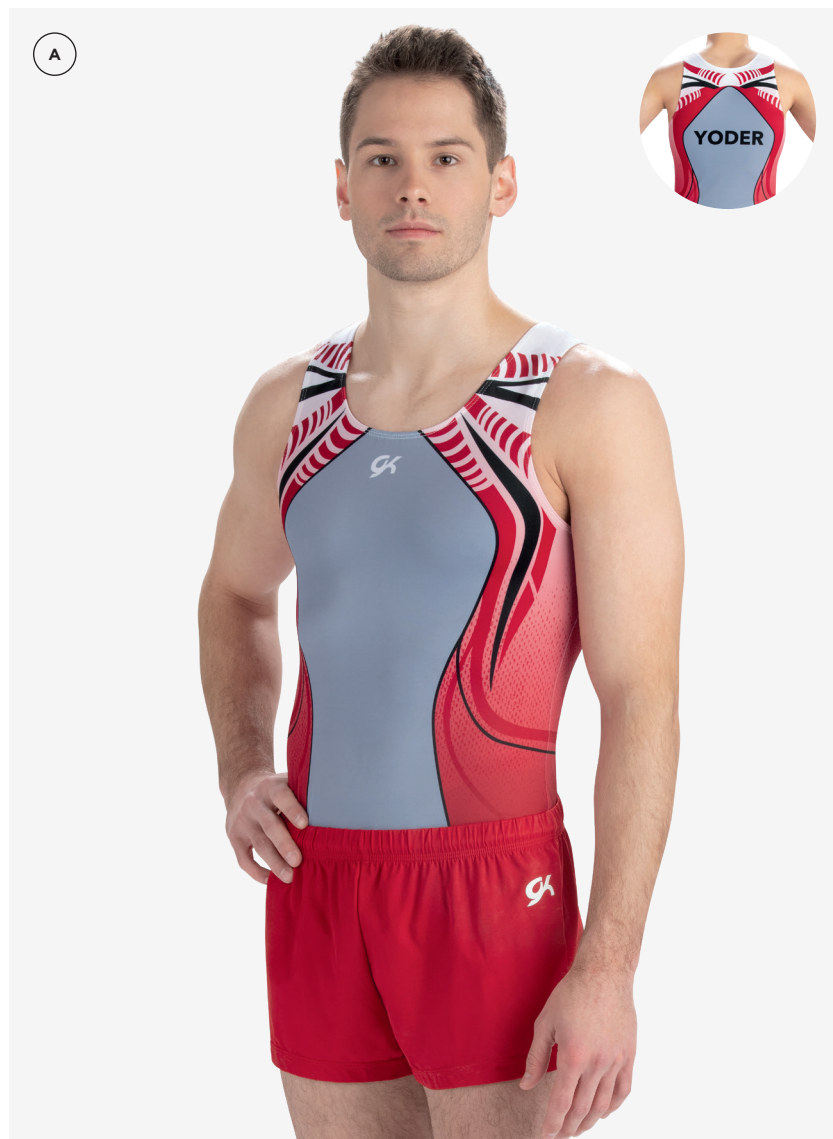


D 1125S **A01**

Competitive shirt shown in gray, crimson and black sublimated on polytek.

D 1813M **016**

Black campus stretchtek pants with comfortable waistband and foot stirrups.



(A) 1130S_{A01}

Competitive shirt shown in steel, black and red sublimated on polytek.

OPTIONS SHOWN: Custom athlete's name on back within sublimation.

(A) 1812M₁₅₂

Red campus stretchtek short with elastic drawstring and upper thigh hemline.



(B) 1132S_{A01}

Competitive shirt shown in cardinal, steel and black sublimated on polytek.

(B) 1812M_{Y06}

Steel campus stretchtek short with elastic drawstring and upper thigh hemline.



C 1115S A01
Competitive shirt shown in candy apple, navy, white and cardinal sublimated on polytek with red campus performance mesh and white campus stretchtek.

C 1813M 152
Red campus stretchtek pants with comfortable waistband and foot stirrups.



D 1117S A01
Competitive shirt shown in white, navy and candy apple sublimated on polytek with white campus performance mesh.

OPTIONS SHOWN: Custom team name on chest within sublimation.

D 1817M 116
Navy nylon/spandex shorts with elastic drawstring and upper thigh hemline.



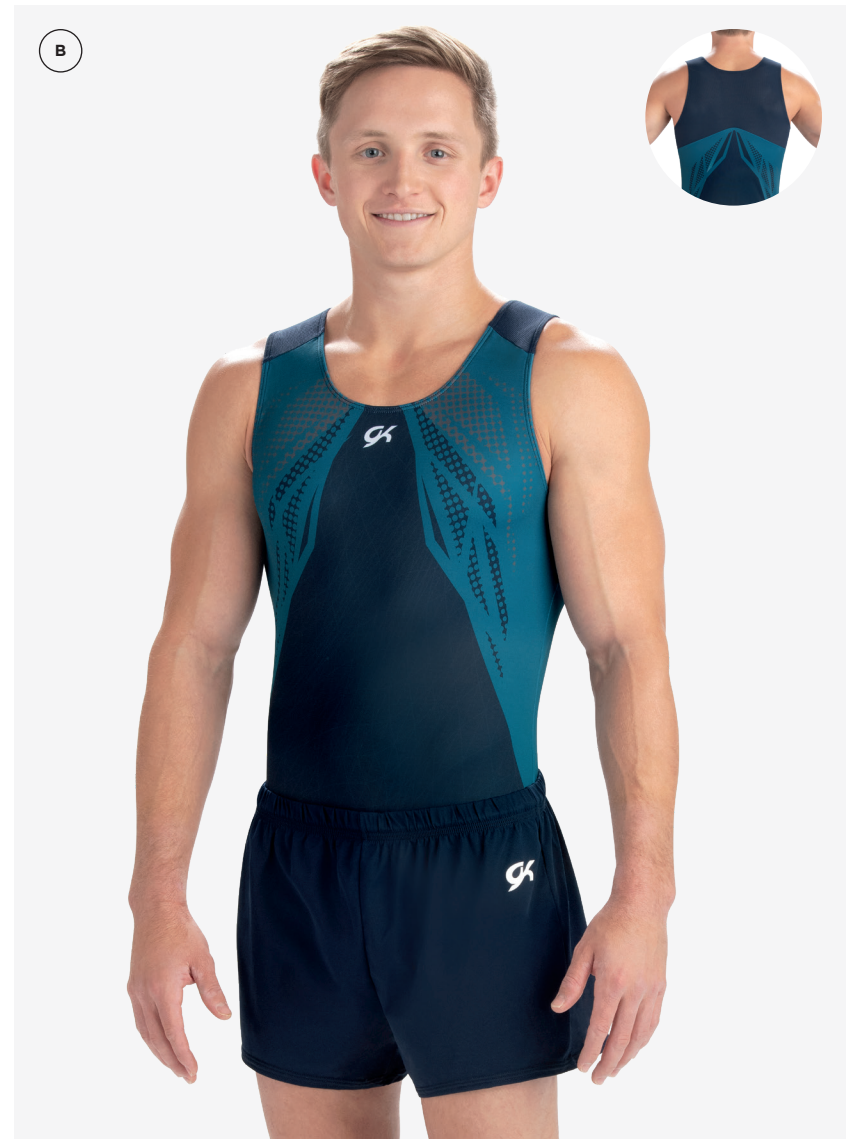
A 1123S A01

Competitive shirt shown in white, midnight and red sublimated on polytek with white campus performance mesh.

A 1849 A02

Red campus stretchtek pants with comfortable waistband and foot stirrups. Features flat front without pin tuck seam.

OPTIONS SHOWN: Custom logo in white imprint.



B 1134S A01

Competitive shirt shown in midnight, navy, spruce and pewter sublimated on polytek with navy campus performance mesh.

B 1812M 116

Navy campus stretchtek short with elastic drawstring and upper thigh hemline.



C 1129S **A02**

Competitive shirt shown in white, black, crimson and gray sublimated on polytek with black techmesh and burgundy nylon/spandex.

OPTIONS SHOWN: Custom logo on chest within sublimation.

C 1812M **016**

Black campus stretchtek short with elastic drawstring and upper thigh hemline.



D 1127S **A01**

Competitive shirt shown in red and black sublimated on polytek with red campus performance mesh.

D 1812M **152**

Red campus stretchtek short with elastic drawstring and upper thigh hemline.

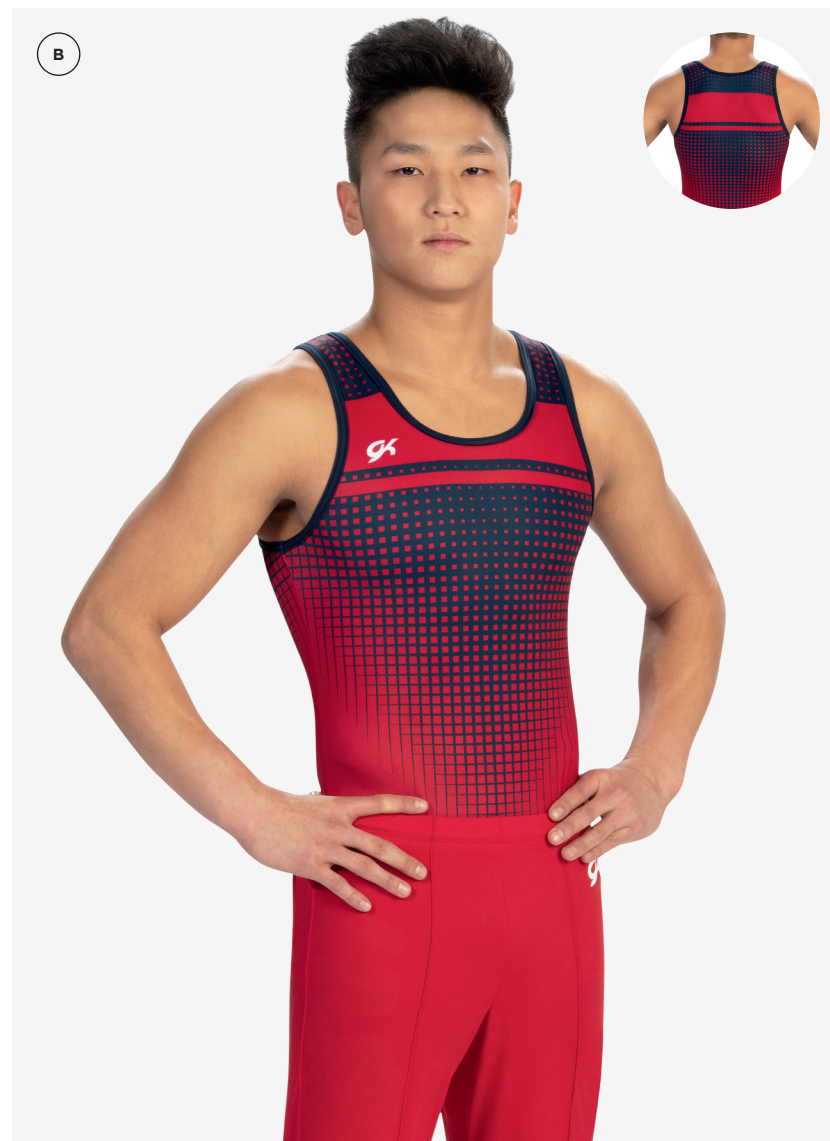


A 1128S_{A01}

Competitive shirt shown in red, black and white sublimated on polytek.

A 1846M₁₈₀

White nylon/spandex pants with comfortable waistband and foot stirrups.

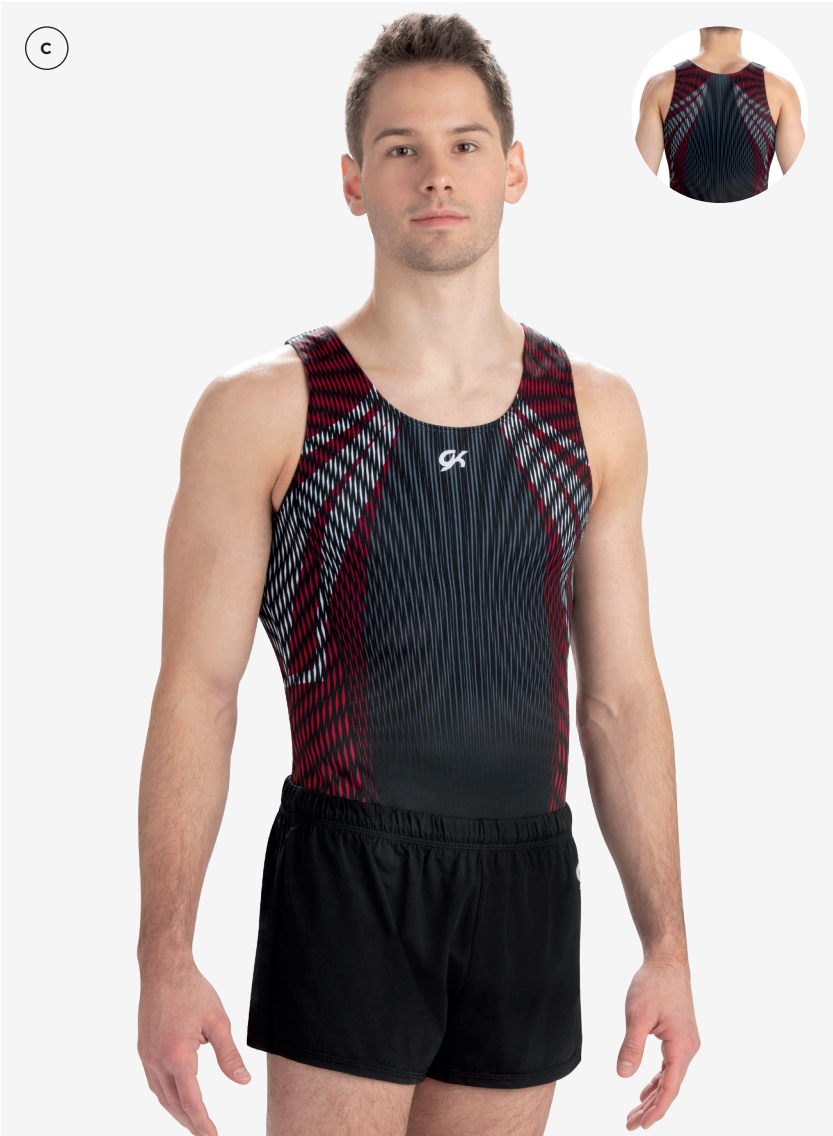


B 1131S_{A01}

Competitive shirt shown in midnight and red sublimated on polytek with navy campus stretchtek.

B 1813M₁₅₂

Red campus stretchtek pants with comfortable waistband and foot stirrups.



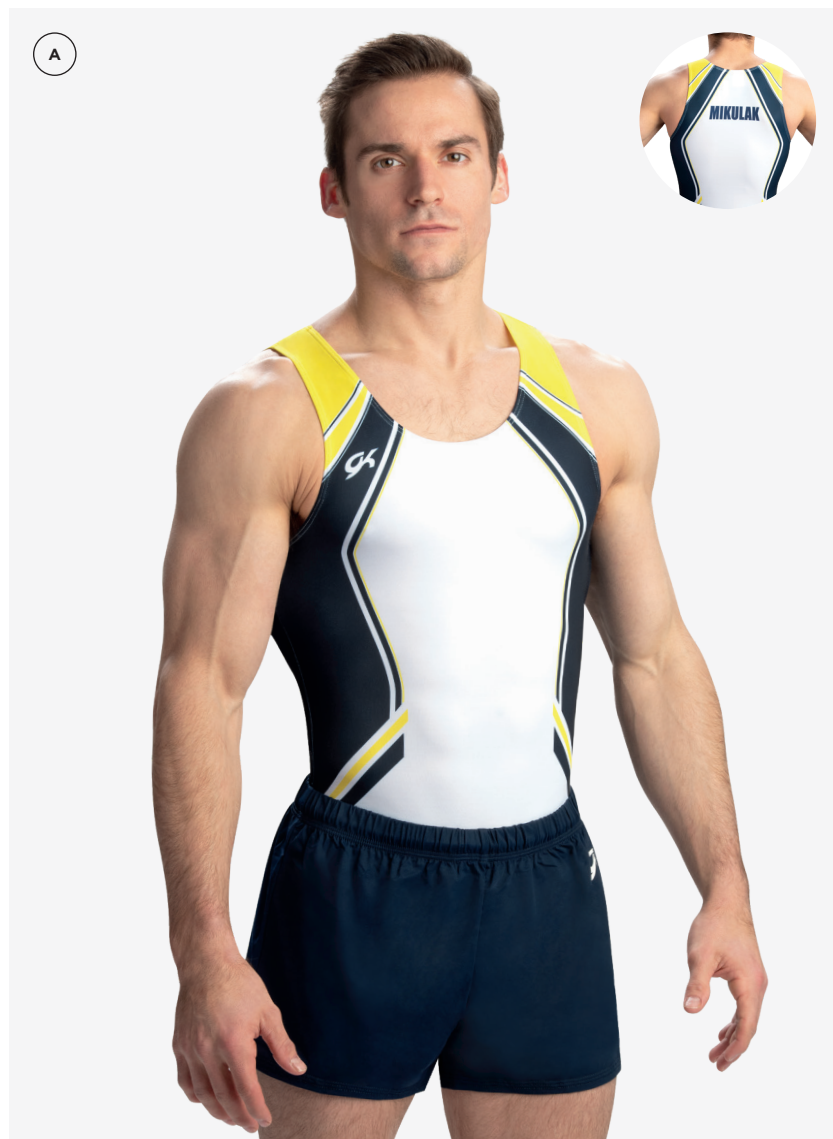
C 1133S_A01
Competitive shirt shown in black, red, white and flannel gray sublimated on polytek.

C 1812M_016
Black campus stretchtek short with elastic drawstring and upper thigh hemline.



D 1137S_A01
Competitive shirt with white and black sublimated on polytek.
Style coordinates with stock style 1896M.

OPTIONS SHOWN: Athlete name on back within sublimation.
D 1812M_016
Black campus stretchtek short with elastic drawstring and upper thigh hemline.



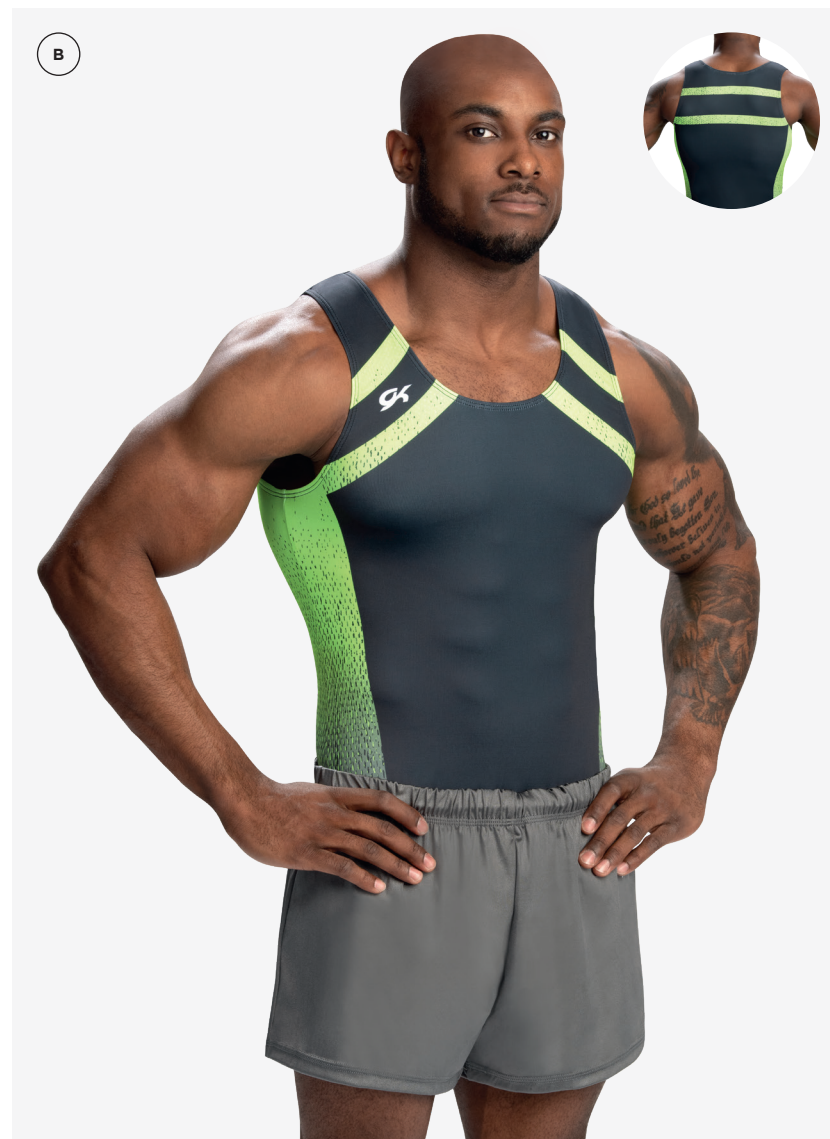
A 1122S_A01

Competitive shirt shown in white, midnight and yellow sublimated on polytek.

OPTIONS SHOWN: Custom athlete's name on back within sublimation.

A 1812M_116

Navy campus stretchtek short with elastic drawstring and upper thigh hemline.

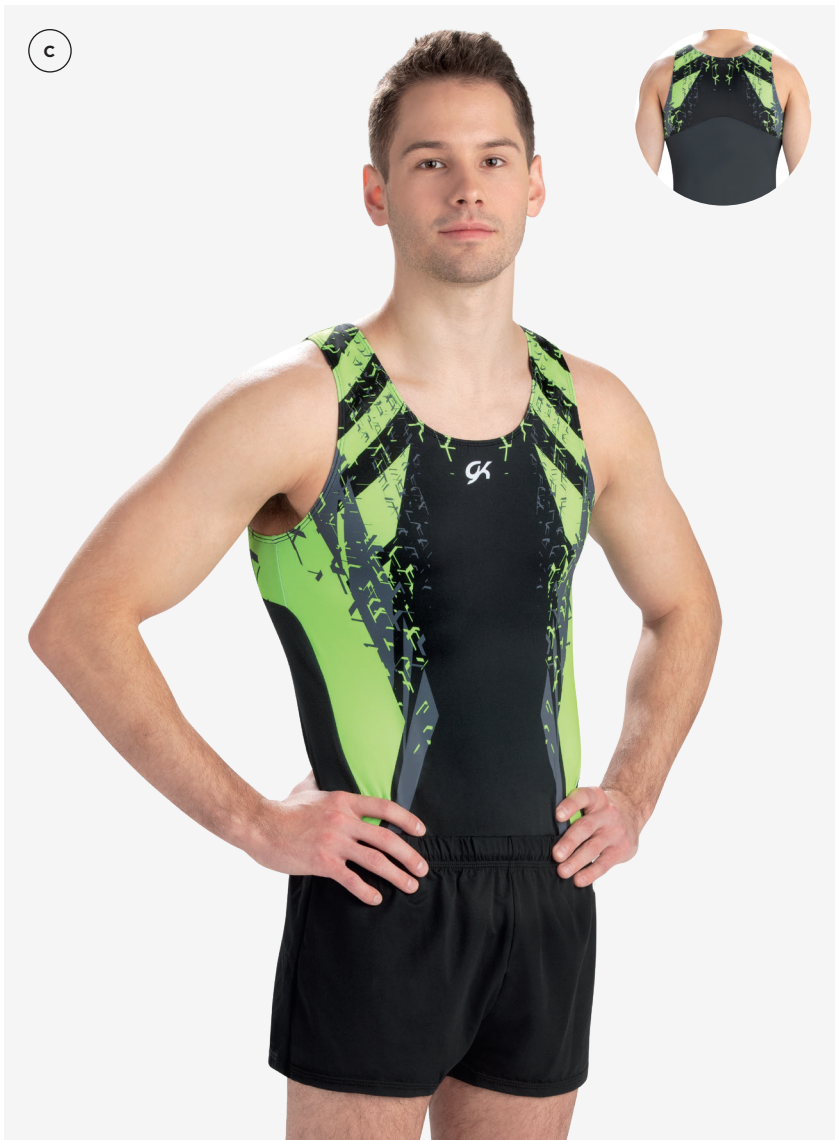


B 1119S_A01

Competitive shirt shown in carbon and key lime sublimated on polytek.

B 1817_A01

Pewter nylon/spandex shorts with elastic drawstring and upper thigh hemline.

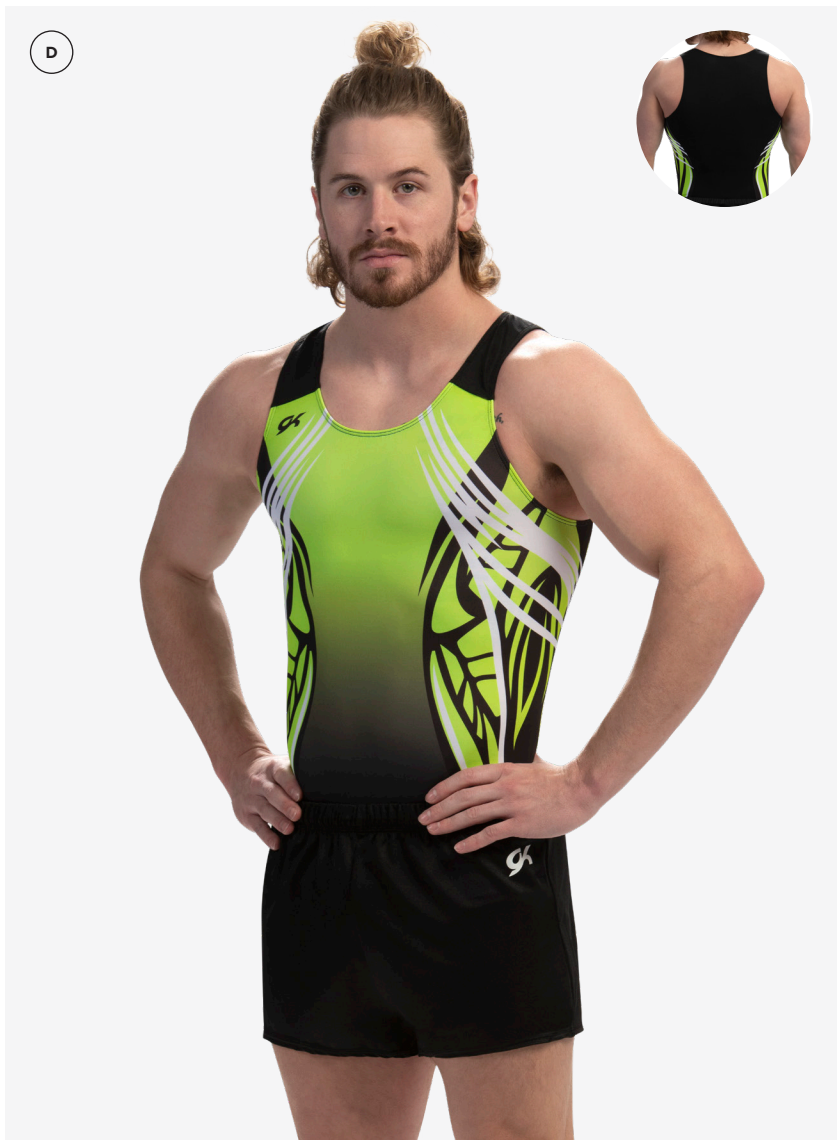


C 1126S **A02**

Competitive shirt shown in black, flannel gray and key lime sublimated on polytek with charcoal techmesh.

C 1812M **O16**

Black campus stretchtek short with elastic drawstring and upper thigh hemline.



D 1103S **A01**

Competitive shirt shown in key lime, white and black sublimated on polytek and black techmesh on back.

D 1817M **O16**

Black nylon/spandex shorts with elastic drawstring and upper thigh hemline.

A 1114S A02

Competitive shirt shown in royal, flannel gray, gray and aluminum sublimated on polytek with charcoal techmesh inserts.

OPTIONS SHOWN: Athlete name on back within sublimation.

A 1812M 160

Royal campus stretchtek short with elastic drawstring and upper thigh hemline.

OPTIONS SHOWN: Custom logo on shorts in white imprint.

B 1102S A01

Competitive shirt shown in white, carbon and black sublimated on polytek with pewter and black nylon/spandex inserts and white techmesh back.

OPTIONS SHOWN: Custom team name on back in black imprint.

B 1817M 016

Black nylon/spandex shorts with elastic drawstring and upper thigh hemline.

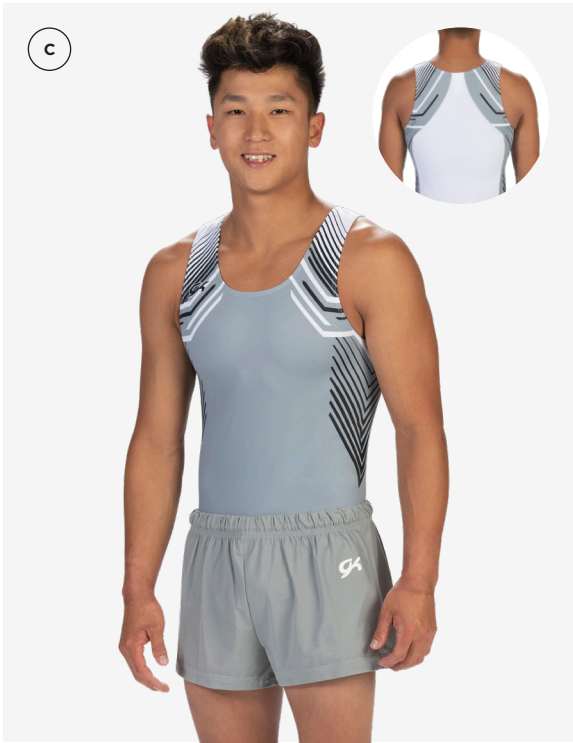
C 1109S A01

Competitive shirt shown in steel, black and white sublimated on polytek with white techmesh back.

C 1812M Y06

Steel campus stretchtek short with elastic drawstring and upper thigh hemline.

GKELITE.COM 1 800 345 4087





(D) 1106S A01

Competitive shirt shown in royal, electric blue and navy sublimated on polytek.

(D) 1817M 116

Navy nylon/spandex shorts with elastic drawstring and upper thigh hemline.

(E) 1110S A02

Competitive shirt shown in black and red sublimated on polytek with white campus stretchtek and white campus performance mesh.

(E) 1812M 152

Red campus stretchtek short with elastic drawstring and upper thigh hemline.



(F) 1105S A01

Competitive shirt with red, white and navy sublimated on polytek with white techmesh.

(F) 1817M 152

Red nylon/spandex shorts with elastic drawstring and upper thigh hemline.

(G) 1700MSO

Competitive shirt shown in true navy drytech.

(G) 1846M 180

White nylon/spandex pants with comfortable waistband and foot stirrups.

SPECIAL ORDER

WARM-UPS

JACKETS & PANTS

Complete your competition look with warm-up jackets and bottoms in your team colors. GK offers options for athletes and coaches.

A



A 8040 A01

Tailored fit jacket in carbon and maroon drytech.

A 8254 A01

Tailored fit pants in carbon drytech.



A 8040 A01

Tailored fit jacket in true navy and white drytech.

A 8254 A01

Tailored fit pants in true navy drytech.





- (B) 8043 A01**
Tailored fit quarter-zip pullover in maroon and black drytech with black techmesh kangaroo pocket.
- (B) 8254 A01**
Tailored fit pants in black drytech.
-
- (C) 8043 A01**
Tailored fit quarter-zip pullover in white and true navy drytech with white techmesh kangaroo pocket.
- (C) 8254 A01**
Tailored fit pants in true navy drytech.

SPECIAL ORDER

SUBLIMATION

COMPETITIVE SHIRTS, BOTTOMS & WARM-UPS

Sublimation, or the process of printing directly on fabric, offers you the ability to create unique and different shirts, bottoms, and warm-ups for your team. With two different sublimation options – Engineered and Custom – GK can craft the apparel of your team’s dreams.



**CUSTOM SUBLIMATION
SHIRT & PANT**

FEATURING STYLES
SBG400, SBG409

ENGINEERED SUBLIMATION

Contact your GK Sales Rep today
to get started on your team's newest designs!

SBE/SBW Minimum: 12 piece on initial order

Sample Deposit Required and is Non-refundable:

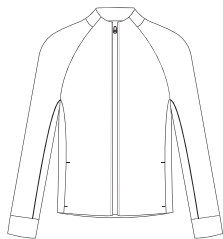
- \$97 per warm-up jacket sample
- \$60 per warm-up bottom sample
- \$150 per warm-up set (jacket and bottom) sample
- \$12 per blanket in lieu of sample

CREATE YOUR LOOK IN FOUR STEPS:

01

PICK A STYLE

Jacket | Pant



SBW304



SBW406

02

SELECT A PRINT

Choose from one of our 10 predesigned prints

03

CHOOSE COLORS

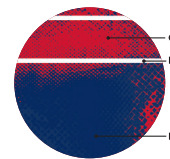
See pg. 58 for color swatches

04

ADD A TEAM NAME

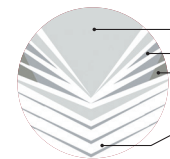
Pick a Location - Left or Right Chest | Center Back
Sublimated logo or team name – No Extra Charge

ENGINEERED SUBLIMATION PRINTS:



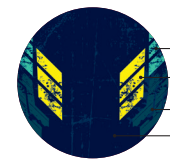
HORIZONTAL CODE
up to 3 color artwork

P: Navy
Q: Red
R: White



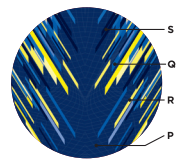
ANGLED POINT
up to 4 color artwork

P: Aluminum
Q: Gray
R: Steel
S: White



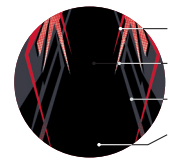
URBAN TECH
up to 4 color artwork

P: Honeydew
Q: Yellow
R: Spruce
S: Tonal Midnight



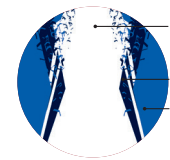
LIGHTNING STRIKE
up to 4 color artwork

P: Navy
Q: Royal
R: Yellow
S: Midnight



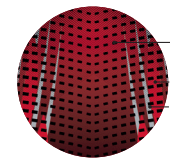
RAZOR
up to 4 color artwork

P: Black
Q: White
R: Red
S: Carbon



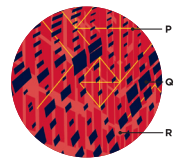
SPARKED
up to 3 color artwork

P: White
Q: Navy
R: Royal



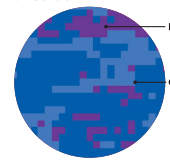
VIPER
up to 3 color artwork

P: Black
Q: Red
R: Gray



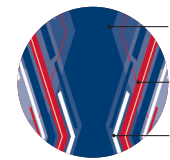
HAZE
up to 3 color artwork

P: Yellow
Q: Midnight
R: Tonal Red



CAMO TECH
up to 2 color artwork

P: Purple
Q: Tonal Royal



REVOLUTION
up to 3 color artwork

P: Blue Ribbon
Q: Red
R: White



A SBE402_{A01}
HORIZONTAL CODE SUBLIMATED DESIGN

Relaxed jacket in true navy drytech with red, white and navy sublimated on optic white and navy techmesh.

A SBE502_{A01}
HORIZONTAL CODE SUBLIMATED DESIGN

Relaxed pants in true navy drytech with red, white, and navy sublimated on optic white.



B SBE402_{A01}
ANGLED POINT SUBLIMATED DESIGN

Relaxed jacket in graphite drytech with white and steel sublimated on optic white and white techmesh.

OPTIONS SHOWN: Team name on back within sublimation.

B SBE502_{A01}
ANGLED POINT SUBLIMATED DESIGN

Relaxed pants in graphite drytech with white and steel sublimated on optic white.

(A) SBE402 A01

RAZOR SUBLIMATED DESIGN

Relaxed jacket in black drytech with black, white, red and carbon sublimation on optic white and black drytech techmesh.

OPTIONS SHOWN: Team name on back in sublimation.

(A) SBE502 A01

RAZOR SUBLIMATED DESIGN

Relaxed pants in black drytech with black, white, red and carbon sublimation on optic white.



(B) SBE402 A01

SPARKED SUBLIMATED DESIGN

Relaxed jacket in navy drytech with white, navy and royal sublimation on optic white with navy techmesh.

(B) SBE502 A01

SPARKED SUBLIMATED DESIGN

Relaxed pants in navy drytech with white, navy and royal sublimation on optic white.



(C) SBE402 A01

REVOLUTION SUBLIMATED DESIGN

Relaxed jacket in red hot drytech and blue ribbon, red and white sublimation on optic white.

OPTIONS SHOWN: Team name on back in sublimation.

(C) SBE502 A01

REVOLUTION SUBLIMATED DESIGN

Relaxed pants in red hot drytech with blue ribbon, red and white sublimation on optic white.

(D) SBE402 A01

LIGHTNING STRIKE SUBLIMATED DESIGN

Relaxed jacket in royal drytech with navy, royal, yellow and midnight sublimation on optic white and navy techmesh.

OPTIONS SHOWN: Team name on back in sublimation.

(D) SBE502 A01

LIGHTNING STRIKE SUBLIMATED DESIGN

Relaxed pants in royal drytech with navy, royal, yellow and midnight sublimation on optic white.





(E) SBE400 A01

CAMO TECH SUBLIMATED DESIGN

Relaxed jacket in navy drytech with royal, blue ribbon, and midnight sublimation on optic white.

(E) SBE502 A01

CAMO TECH SUBLIMATED DESIGN

Relaxed pants in navy drytech with royal, blue ribbon, and midnight sublimation on optic white.

(F) SBE400 A01

HAZE SUBLIMATED DESIGN

Relaxed jacket in carbon drytech with flannel gray, carbon, black, and white sublimation on optic white.

(F) SBE502 A01

HAZE SUBLIMATED DESIGN

Relaxed pants in carbon drytech with flannel gray, carbon, black, and white sublimation on optic white.



(G) SBE400 A01

URBAN TECH SUBLIMATED DESIGN

Relaxed jacket in red hot drytech with candy apple, royal, white, and midnight sublimation on optic white.

(G) SBE502 A01

URBAN TECH SUBLIMATED DESIGN

Relaxed pants in red hot drytech with candy apple, royal, white, and midnight sublimation on optic white.

(H) SBE400 A01

VIPER SUBLIMATED DESIGN

Relaxed jacket in black drytech with red, gray, and black sublimation on optic white.

(H) SBE502 A01

VIPER SUBLIMATED DESIGN

Relaxed pants in black drytech with red, gray, and black sublimation on optic white.

BRING YOUR VISION TO LIFE

Contact your GK Sales Representative to learn more about our custom design services. We'll take your thoughts, ideas, and inspiration and turn it into the competitive apparel or warm-up you're envisioning.

FEATURING STYLES
SBG408
SBG410



THE DETAILS

SBG|SBW Minimum: 12 piece on initial order.
Sample Deposit Required and is non-refundable.

- \$75 per men's shirt sample
- \$60 per shorts sample
- \$85 per competitive pant sample
- \$97 per warm-up jacket sample
- \$150 per warm-up set (jacket and bottom) sample
- \$12 per blanket in lieu of sample

FEATURING
STYLE
SBG410



FEATURING
STYLES
SBG400
SBG409

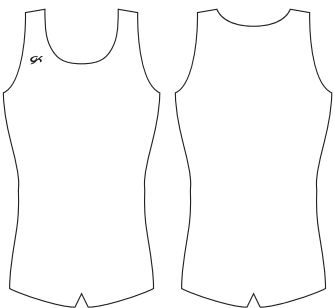




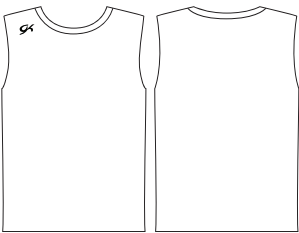
FULLY SUBLIMATED USA
FEATURING STYLES SBW304, 8252A01



SHIRTS



SBG400



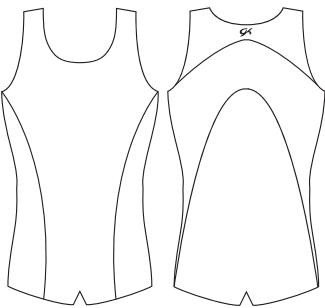
SBG401



SBG405



SBG406

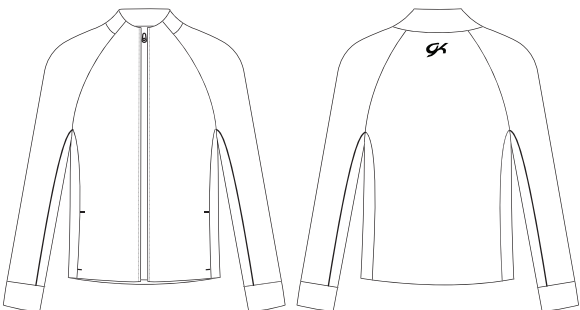


SBG407

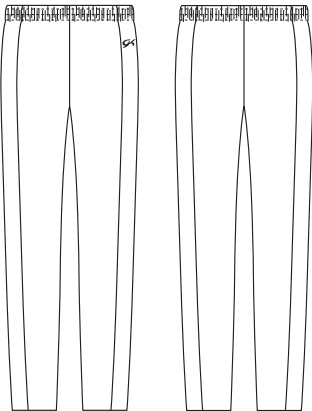


SBG408

WARM - UPS

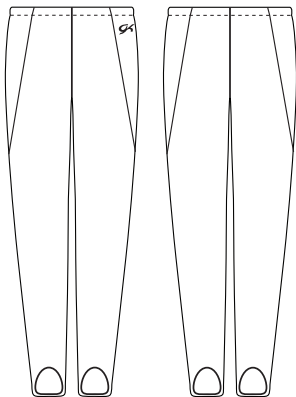


SBW304

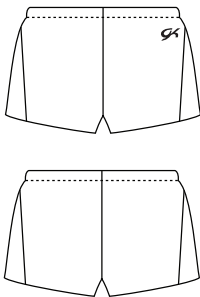


SBW406

BOTTOMS



SBG409



SBG410

IN STOCK

COMPETITIVE APPAREL

READY TO SHIP

GK offers a full line of shirts, shorts, pants & warm-ups that are ready to ship. Available for purchase as shown, or with optional embellishment additions. GK stock apparel can outfit your team when you need it quick!





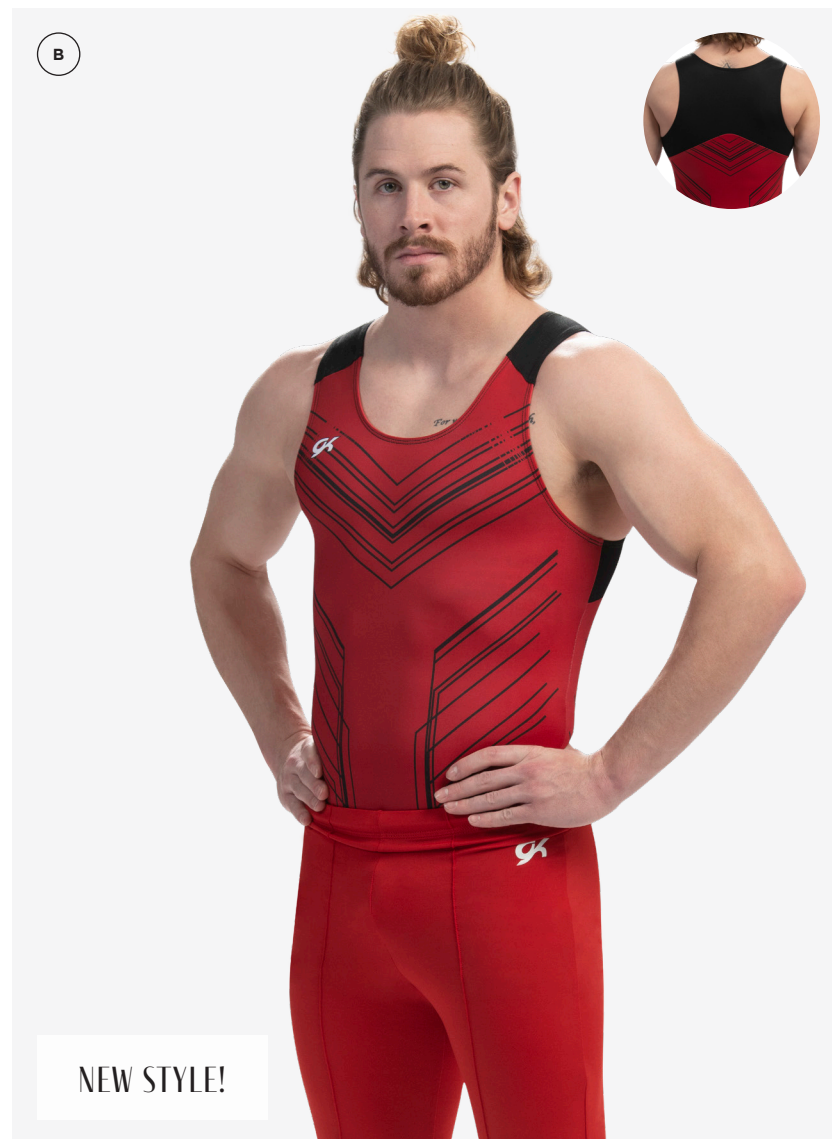
A 1898M

Sublimated competitive shirt on polytek with navy performance mesh and navy campus stretchtek with boycut leg.

Style coordinates with Special Order style 1139S.

A 1812M₁₁₆

Navy campus stretchtek short with elastic drawstring and upper thigh hemline.



B 1899M

Sublimated competitive shirt on polytek with black techmesh with boycut leg.

Style coordinates with Special Order style 1140S.

B 1813M₁₅₂

Red campus stretchtek pants with comfortable waistband and foot stirrups.



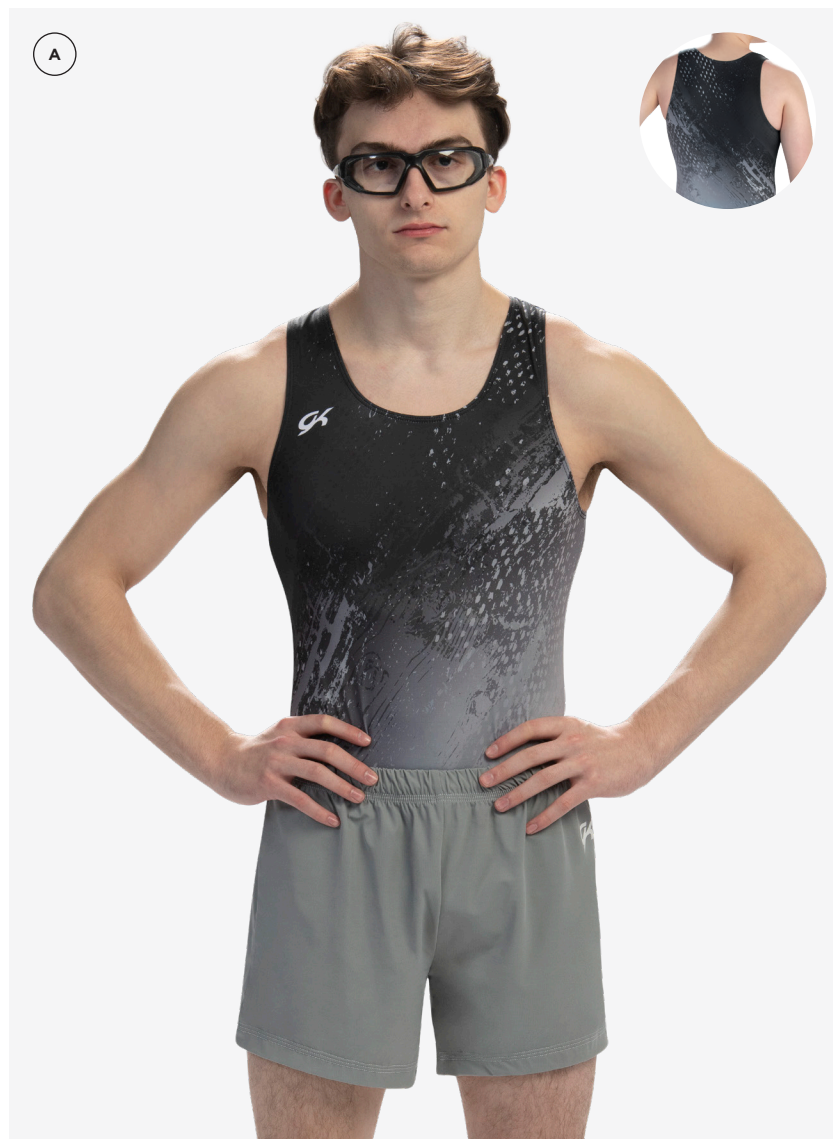
C 1900M
Sublimated competitive shirt on polytek with navy performance mesh with boycut leg.
Style coordinates with Special Order style 1142S.

C 1812M **Y06**
Steel campus stretchtek short with elastic drawstring and upper thigh hemline.



D 1897M
Sublimated competitive shirt on polytek with boycut leg.

D 1813M **152**
Red campus stretchtek pants with comfortable waistband and foot stirrups.



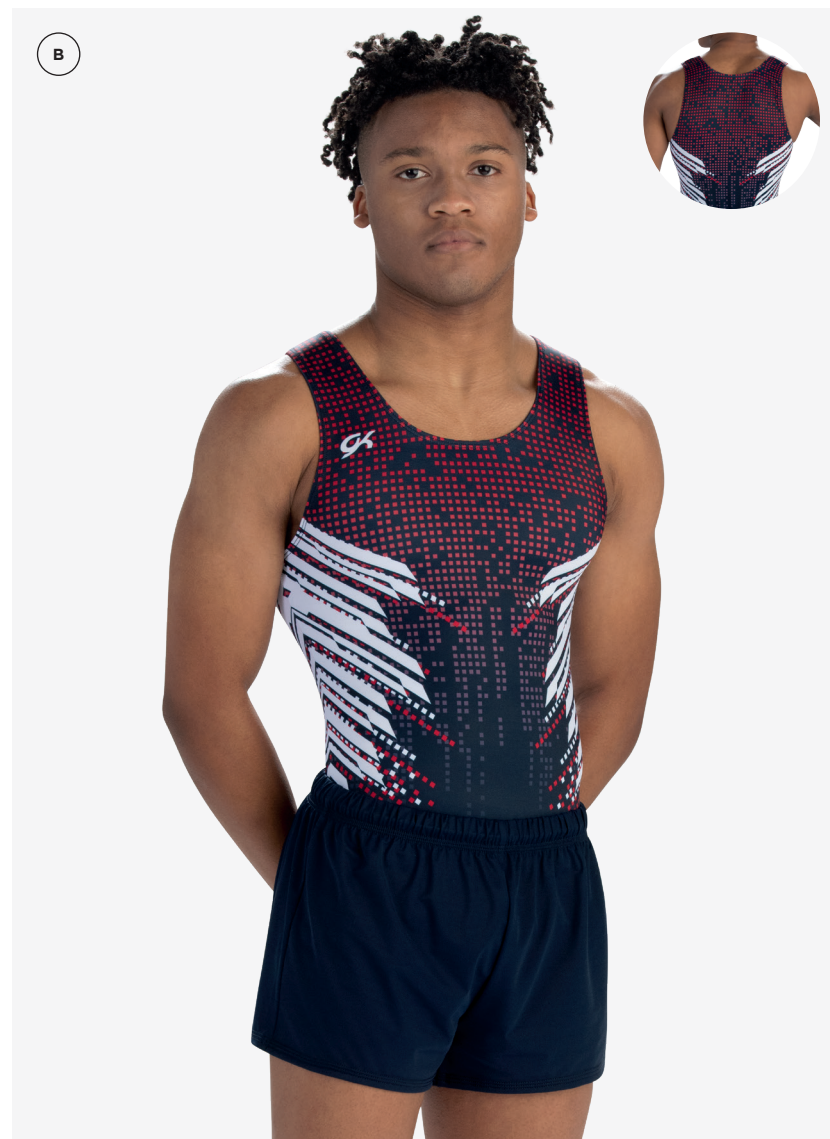
(A) 1895M

Sublimated competitive shirt on polytek with boycut leg.

Style coordinates with Special Order style 1138S.

(A) 1811M_{Y06}

Steel campus stretchtek short with elastic drawstring and mid thigh hemline.



(B) 1893M

Sublimated competitive shirt on polytek with boycut leg.

Style coordinates with Special Order style 1135S.

(B) 1812M₁₁₆

Navy campus stretchtek short with elastic drawstring and upper thigh hemline.

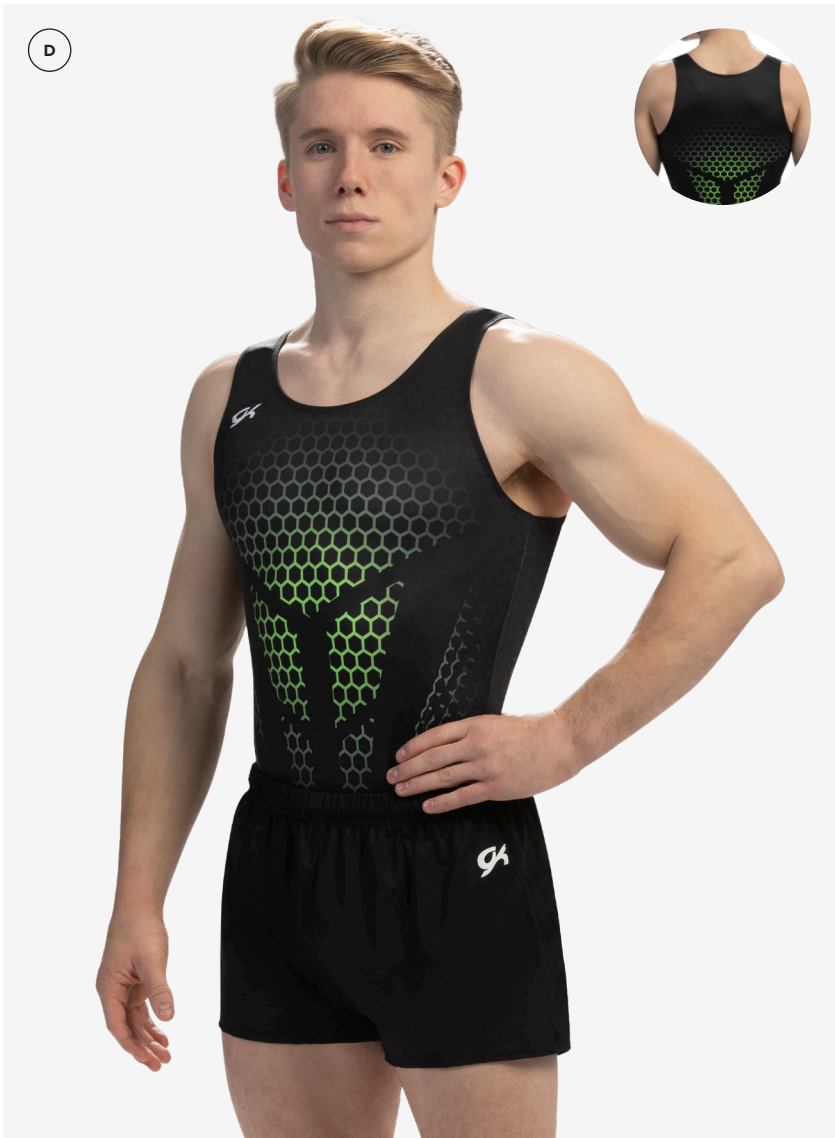


C 1855M

Sublimated vertical draped flag design in red, white, and blue sublimated on polytek with boycut leg.

C 1812M 152

Red campus stretchtek shorts with elastic drawstring waist and upper thigh hemline.



D 1896M

Sublimated competitive shirt on polytek with boycut leg.
Style coordinates with Special Order style 1137S.

D 1812M 016

Black campus stretchtek short with elastic drawstring and upper thigh hemline.



A 1891M

Sublimated competitive shirt on polytek with boycut leg.

Style coordinates with Special Order style 1128S.

A 1812M₁₁₆

Navy campus stretchtek shorts with elastic drawstring waist and upper thigh hemline.



B 1892M

Sublimated competitive shirt on polytek with boycut leg.

Style coordinates with Special Order style 1125S.

B 1812M₁₀₆

Steel campus stretchtek shorts with elastic drawstring waist and upper thigh hemline.



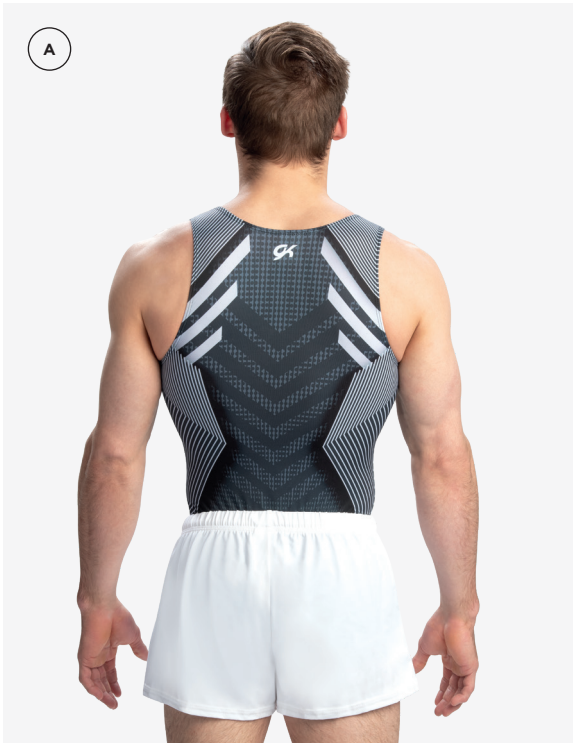
C 1887M
Sublimated competitive shirt on polytek with navy campus performance mesh and boycut leg.

C 1811M **116**
Navy campus stretchtek shorts with elastic drawstring waist and mid thigh hemline.



D 1878M
Sublimated competitive shirt on polytek with navy campus performance mesh and boycut leg.

D 1817M **116**
Navy nylon/spandex shorts with elastic drawstring waist and upper thigh hemline.



A 1889M

Sublimated competitive shirt on polytek with boycut leg.

A 1812M **180**

White campus stretchtek shorts with elastic drawstring waist and upper thigh hemline

B 1880M

Sublimated competitive shirt on polytek with boycut leg.

B 1817M **160**

Royal nylon/spandex shorts with elastic drawstring waist and upper thigh hemline.

C 1894M

Sublimated competitive shirt on polytek with boycut leg.

Style coordinates with Special Order style 1136S.

C 1813M **Y06**

Steel campus stretchtek pants with comfortable, yet secure, waistband and stirrups.





D 1879M

Sublimated competitive shirt on polytek with white techmesh, black techmesh, red nylon/spandex, black nylon/spandex, red campus performance mesh and boycut leg.

D 1817M 152

Red nylon/spandex shorts with elastic drawstring waist and upper thigh hemline.

E 1888M

Sublimated competitive shirt on polytek with black techmesh and boycut leg.

E 1813M 152

Red campus stretchtek pants with comfortable, yet secure, waistband and stirrups.



F 1832M

Competitive shirt in red nylon/spandex and boycut leg.

- 016 | Black 116 | Navy
152 | Red 160 | Royal

F 1818M 016

Black nylon/spandex shorts with elastic drawstring waist and upper thigh hemline.

G 1700M 016

Black drytech compression shirt featuring flat lock seams for comfort.

Style coordinates with Special Order style 1700MSO.

G 1812M 152

Steel campus stretchtek shorts with elastic drawstring waist and upper thigh hemline.

IN STOCK

WARM-UPS

JACKETS & BOTTOMS

Select from a variety of warm-up jackets and bottoms to outfit your team. Whether purchased as shown, or with additional embellishment, GK can produce quick turn in stock warm-ups for your team.

A



A

1786

Relaxed fit men's warm-up jacket in navy drytech.

OPTIONS SHOWN: Custom team name on back body in bridge laser lettering.

016 | Black

116 | Navy

A

1787

Relaxed fit men's warm-up pants in navy drytech.

016 | Black

116 | Navy



A WUJ03G

Unisex colorblock warm-up jacket with kangaroo hand pockets and two stripes on lower sleeves.

- x43 | Black & White
- vm2 | Dark Green & White
- vg5 | Maroon & White
- vx2 | Navy & White
- vz2 | Purple & White
- wa1 | Red & White
- wb3 | Royal & White

B WUJ02G

Slim fit unisex warm up jacket with hand pockets and elastic at bottom waistband and cuff.

- 016 | Black
- 32c | Dark Green
- 110 | Maroon
- 116 | Navy
- 148 | Purple
- 152 | Red
- 160 | Royal



C WUP01G
Polyester/Spandex unisex joggers with elastic and drawcord at waistband, two hand pockets and two zippers at bottom leg opening.

- | | |
|------------------|--------------|
| 016 Black | 148 Purple |
| 32C Dark Green | 152 Red |
| 110 Maroon | 160 Royal |
| 116 Navy | |



D 1787
Relaxed fit men's warm-up pants in navy drytech.


- | | |
|-------------|------------|
| 016 Black | 116 Navy |
|-------------|------------|



A 1846M

NYLON/SPANDEX PANTS

Nylon/spandex pants with comfortable, yet secure, waistband and stirrups.

- | | |
|--|---|
|  Y06 Steel |  152 Red |
|  016 Black |  116 Navy |
|  180 White |  160 Royal |

B 1813M

CAMPUS STRETCHTEK PANTS

Campus stretchtek pants with comfortable, yet secure, waistband and stirrups.

- | | |
|--|---|
|  Y06 Steel |  152 Red |
|  016 Black |  116 Navy |
|  180 White |  160 Royal |



C CB912

STEEL PANELED SHORT

Relaxed short with mid-length inseam.

GKELITE.COM 1 800 345 4087



D 1812M

CAMPUS STRETCHTEK SHORTS

Campus stretchtek shorts with elastic drawstring waist and upper thigh hemline.

- Y06 | Steel
- 016 | Black
- 180 | White
- 152 | Red
- 116 | Navy
- 160 | Royal



E 1817M

NYLON/SPANDEX SHORTS

Nylon/spandex shorts with elastic drawstring waist and upper thigh hemline.

- Y06 | Steel
- 016 | Black
- 180 | White
- 152 | Red
- 116 | Navy
- 160 | Royal

F 1811M

CAMPUS STRETCHTEK LONG SHORTS

Campus stretchtek shorts with elastic drawstring waist and mid thigh hemline.

- Y06 | Steel
- 016 | Black
- 180 | White
- 152 | Red
- 116 | Navy
- 160 | Royal

G 1818M

NYLON/SPANDEX LONG SHORTS

Nylon/spandex shorts with elastic drawstring waist and mid thigh hemline.

- Y06 | Steel
- 016 | Black
- 180 | White
- 152 | Red
- 116 | Navy
- 160 | Royal

IN STOCK

ACCESSORIES

EVERYTHING YOU NEED

Complete your team's look with our full line of backpacks,
chalk and more!

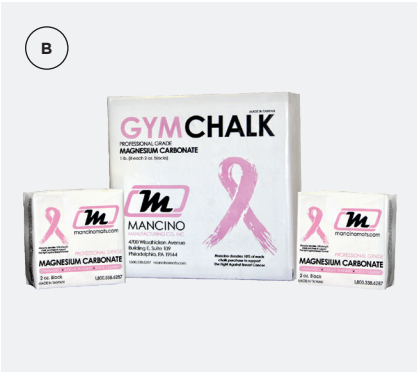


A L1164

BACKPACK

Lightweight and durable, made with 100% nylon and exclusive texture shell. Features include mesh-lining, 4 zippered areas with customized space and 180 degree zipper on top for easy access. The secure padded interior compartment protects your laptop or tablet. Side compression straps secure your water bottle, while reflective panels offer visibility at night. Dimensions: 12" wide x 18" tall x 7" deep. Customize with available embellishments.

- | | |
|-------------------|------------------|
| 015 Berry | 152 Red |
| 016 Black | 160 Royal |
| 059 Eggplant | 175 Turquoise |
| 088 Kelly Green | 180 White |
| 113 Mint | 488 Lime Green |
| 116 Navy | |



B GK50

GYM CHALK

Magnesium Carbonate stocked by the pound in eight 2-ounce blocks.



C GK49

3 1/2" NEOPRENE WRISTBANDS

These neoprene wristbands protect your wrists when using grips.

- 016 | Black 160 | Royal



D GK88

5" TERRY WRISTBANDS

Stretch terry wristbands protect your wrists when using grips.

- 180 | White



E GK103

TIGER PAW

Protects and supports wrists to prevent injuries. Stocked as shown.

SIZE: X-Small (Under 69 lbs.), Small (69-115 lbs.), Medium (115-150 lbs.), Large (150-210 lbs.)

- 027 | Nude

OPTIONS & INFORMATION

FABRICS, NAME OPTIONS & MORE

Once you've found a style you like, the real fun begins! With the most expansive selection of fabrics in the industry, GK will have the colors and the options you want.



FABRIC OPTIONS AND COLORS

GK offers fabrics that are produced to meet our exclusive stretch and quality standards. GK takes tremendous pride in having the best fabrics in the industry. As the leader in performance apparel, it's important for us to advise you of the tendencies of certain fabrics, as well as practices to avoid.

OUR MEN’S FABRICS ARE LONG WEARING AND DURABLE:

Long wearing, durable fabrics include: Nylon/Spandex, Campus Stretchtek, Campus Performance Mesh, DryTech, and Techmesh.

Note that DryTech may shrink when heat is applied.

FABRIC CARE AND USE:

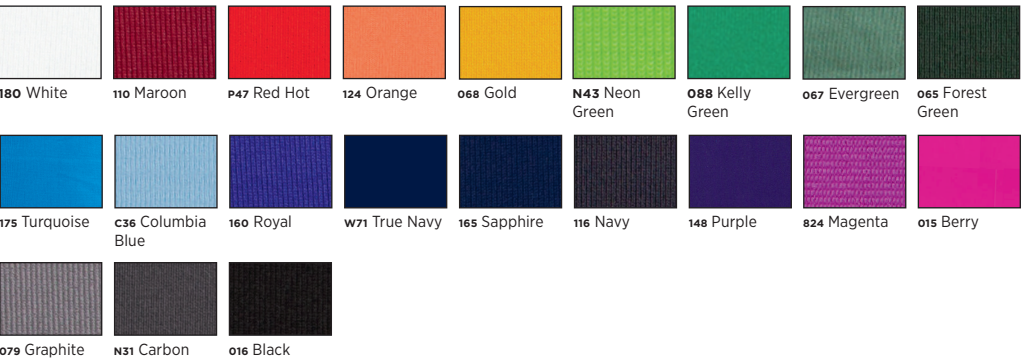
- 1. Repeated wear and washing may cause the fabrics to fade.
- 2. Alcohol in all aerosol products, such as hairspray, affect these fabrics. Please cover garment before applying. Perfumes and body lotions can also affect fragile fabrics.
- 3. Deodorants and perspiration may cause these fabrics to color bleed or fade. We recommend the use of a pure crystal deodorant which does not contain Aluminum Chlorohydrate.
- 4. Color transference or color bleed occurs when a white or light color fabric is combined with a bright or dark color fabric. This is a common industry problem and can become more obvious under certain conditions, especially when a light color garment is worn under a dark warm-up or shorts, and/or when damp garments are left in gym bags. It is impossible for Elite Sportswear to guarantee that our fabrics will not bleed, even by following proper washing instructions, due to the individual nature of each athlete's wear/washing procedure. You are free to order any fabric and color combination, but please do so with great discretion. If you choose to combine light and dark colors, Elite Sportswear will not be responsible for replacing your garment(s) if color bleed occurs.

IMPORTANT WASHING INSTRUCTIONS FOR ALL FABRICS

Garment(s) must be washed separately. Turn garment inside out. Use a mild liquid detergent, gently hand wash in a large volume of cold water. Rinse immediately, DO NOT allow garment to soak. Pat dry with a clean towel and use a thick plastic hanger to air dry. DO NOT use fabric softeners. Fabric softeners negatively affect the adhesives used in our garments, causing the foil on our fabrics to discolor and the embellishments to fall off. DO NOT BLEACH. DO NOT dry clean. Dry cleaning uses harsh chemicals that can damage the fabric finishes and embellishments used in our garments. DO NOT iron. The heat from an iron can melt and/or discolor the delicate fabrics in our garments. Excessive heat can also weaken the adhesives used to attach the embellishments to the garment and cause them to fall off. All of our prices and materials reflect Elite Sportswear's commitment to offer consistently high standards in quality at the lowest possible price. However, continued increases/changes in raw materials, utilities, labor, etc. subject us to price changes beyond our control. Therefore, prices and materials are subject to change without notice.

GK is committed to providing the very best sublimation processes in the industry. We work with our fabric vendors and sublimation ink suppliers to continually improve the outcome of our sublimated garments. These improvements may affect the sublimated colors on reorders, as we continue to advance our sublimated techniques. Due to the nature of the sublimation process, GK will match the color on reorders to the best of our ability, but cannot guarantee a perfect match. Be mindful that wear and washing throughout the season will affect the color saturation in your garment. Reorders will be processed based off the artwork and colors used in the original production order, and may not match the garments already in use.

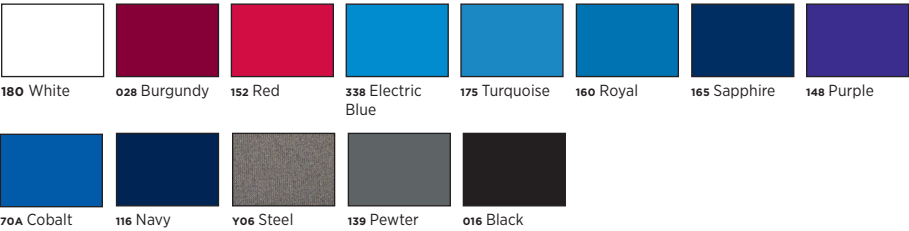
DRYTECH 92% Micropoly/8% Lycra® LONG WEARING, DURABLE FABRIC Available in binding and piping.



SUBLIMATION COLORS 80% Nylon/20% Spandex LONG WEARING, DURABLE FABRIC Available in binding and piping.



NYLON/SPANDEX 80% Nylon/20% Spandex LONG WEARING, DURABLE FABRIC Available in binding and piping.



TECHMESH 80% Nylon/20% Spandex
LONG WEARING DURABLE FABRIC
Also available in piping and binding.



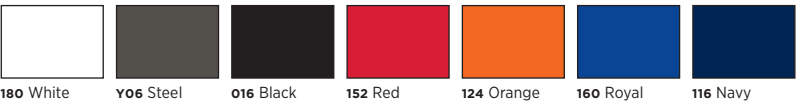
POLYTEK 80% Nylon/20% Spandex



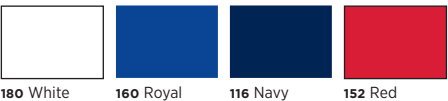
PRIMATEX 80% Nylon/20% Spandex



CAMPUS STRETCHTEK
LONG WEARING DURABLE FABRIC



CAMPUS PERFORMANCE MESH
LONG WEARING DURABLE FABRIC



**DISCONTINUED
COLORS:**
(available through June 1, 2022
for reorders only)

DRYTECH
024 Brown
068 Gold

STOCK FONTS

CHOOSE FROM 13 STOCK FONTS FOR IMPRINTING AND APPLIQUÉ EMBROIDERY



CUSTOM EMBELLISHMENT OPTIONS

Embroidery



example in white

EMBROIDERY PRICING & FEES:

3" X 3"	\$10.00
6" X 3"	\$15.00
5" X 5"	\$20.00
7" X 3"	\$20.00
9" X 4"	\$25.00

 180 White	 854 Neon Yellow	 096 Light Blue	 110 Maroon	 810 Silver (Non Metallic)
 152 Red	 488 Lime Green	 175 Turquoise	 128 Orchid	 076 Grey
 124 Orange	 065 Forest Green	 160 Royal	 J81 Wild Pink	 016 Black
 77A Neon Orange	 X65 Emerald Green	 116 Navy	 Y07 Flamingo	
 069 Gold Glimmer	 170 Teal	 148 Purple	 18A Cheeky Pink	
 483 Yellow	 78A Seaglass	 100 Lilac	 17A Ruby Glint	

Imprinting

NO SET-UP FEES!



example in glitter pink imprinting

1 COLOR IMPRINTING:

PRICE: \$20.00.

Choose from the following stock colors.

PLEASE SEE PAGE 59 FOR AVAILABLE FONTS.

 180 White	 U56 Glitter Yellow	 U54 Glitter Purple	 016 Black	 VC9 Glitter Red
 U50 Glitter White	 U52 Glitter Green	 U51 Glitter Pink	 152 Red	 VG1 Glitter Royal
 U61 Metallic Red	 N43 Neon Green	 850 Neon Pink	 160 Royal	 VG7 Glitter Silver
 852 Neon Orange	 U53 Glitter Blue	 U64 Neon Coral	 M07 Metallic Silver	 26G Glitter Malibu
 U55 Glitter Orange	 U63 Neon Blue	 U65 Neon Raspberry	 M08 Metallic Gold	
 U57 Gold Prism	 U59 Metallic Blue	 U62 Metallic Magenta	 VC8 Glitter Black	
 854 Neon Yellow	 U60 Metallic Wysteria	 U58 Silver Prism	 WJ4 Glitter Gold	

Appliqué Embroidery

NO SET-UP FEES!

EMBROIDERY PRICING & FEES:

ONE LAYER	\$25.00
TWO LAYER	\$30.00
THREE LAYER	\$35.00

SEE ABOVE FOR COLORS



example of a one-layer in berry nylon/spandex over black DryTech



example of a two-layer in white mystique and berry mystique over black DryTech



example of a three-layer in berry mystique, white mystique and lime mystique over black DryTech

AVAILABLE IN ALL COLORS OF:

Nylon/Spandex, Nylon/Spandex with Foil, DryTech, Hologram

Imprintz™

Multi-colored printed logo



PRICING PER LOCATION:

SMALL (UP TO 3"X6"):

\$20.00

MEDIUM (UP TO 6"X6"):

\$25.00

LARGE (UP TO 8"X8"):

\$30.00

X-LARGE (UP TO 8"X10"):

\$35.00

 Y28 Red	 Y21 Gold	 Y57 Bright Turquoise	 Y36 Purple	 Y31 Pink
 Y25 Cosmo	 Y22 Yellow	 Y40 Columbia Blue	 Y56 Ultra Violet	 Y61 Berry
 Y32 Cherry	 Y58 Key Lime	 Y34 Electric Blue	 Y35 Wisteria	 Y59 Aluminum
 Y26 Candy Apple	 Y47 Kelly	 Y42 Royal	 Y02 Cardinal	 Y48 Gray
 Y24 Coral	 Y46 Evergreen	 Y38 Sapphire	 Y63 Wildberry	 Y49 Flannel Gray
 Y52 Brown	 Y03 Teal	 Y04 Blue Ribbon	 Y34 Sangria	 Y60 Pewter
 Y23 Orange	 Y45 Spruce	 Y37 Navy	 Y29 Crimson	 Y50 Carbon
 Y20 Vegas Gold	 Y44 Turquoise	 Y39 Midnight	 Y33 Fuchsia	 Y51 Black

SIZING INSTRUCTIONS

Sizing Instructions

At GK, years of pattern development have taught us that the most accurate way to ensure proper fit is to rely on body measurements. An individual's perception of fit may vary greatly; however, the GK Fit is scientifically engineered to move with the athlete for optimal performance. Measuring athletes takes the guess work out of selecting their size. It is quick, easy, reliable, and helps to achieve a similar fit for all team members. The fit and feel of a garment will vary significantly based on the fabric type and embellishments used on the garment. To continue to provide the "GK fit" we use our size charts when ordering garments.

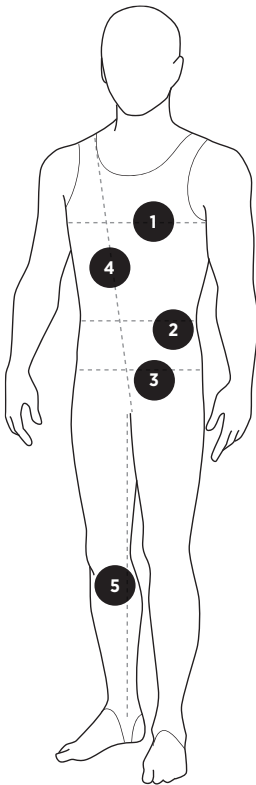
The following size charts have been thoroughly evaluated to ensure that taking accurate athlete measurements will result in the correct size being ordered. To select the correct size, reference the appropriate GK size chart for the style being ordered to determine which size best corresponds to the athlete's measurements. When an athlete's measurement contains a partial inch, always round up to the next full inch. If an athlete's measurements fall across two sizes, order the larger size. For more clarification, contact your sales rep or our customer service department. Remember, special order items are not returnable.

How to Measure

The goal of measuring is to determine the correct size to order for each athlete. Accurate measurements are vital to the proper fit of your athlete's apparel. Please make sure that all athletes are wearing fitted workout apparel during the measuring session.

- CHEST MEASUREMENT:** Measure the chest of the athlete while their arms are down at their sides and at the fullest part of the chest. Your measuring tape should always be parallel to the floor while taking the measurement.
- WAIST MEASUREMENT:** When measuring the waist, wrap the tape at the natural waistline which is the narrowest part of the waist. If you are having trouble locating the natural waist, have the athlete bend to the side. The natural waist is where the body bends. Again, the measuring tape should always be parallel to the floor while taking the measurement.
- HIP MEASUREMENT:** Take the hip measurement at the fullest part of the buttocks with the athlete's feet together. Ensure that the tape measure is parallel to the floor.
- TORSO MEASUREMENT:** Take the torso measurement from the center of the shoulder, down the torso, through legs, and back to the shoulder. This is the most important measurement.
- INSEAM MEASUREMENT:** The length of the leg from the crotch to one inch above the floor. Measure the athlete without shoes.

GROWING ROOM: GK uses 4 way stretch fabrics that have minimal shrink and exceptional stretch. THE FABRIC SHOULD FIT SNUG TO THE BODY AND NOT BE LOOSE. GK does not recommend up-sizing to allow for growing room. The fabric will stretch with the athlete while they grow.



SIZE CHARTS

Special Order Sizes For Men's Competitive Wear

ADULT: XS - S - M - L - XL - 2XL - 3XL - 4XL
CHILD: XS - S - M - L - XL

Special Orders can now be placed by mail, fax, phone or online, using UDESIGN360. If placing your order by phone, please be prepared to finalize your order by providing your payment information.

BOY'S/MEN'S SIZE CHART IN INCHES							
SIZE	CHEST	WAIST	HIP	TORSO	LONG TORSO OPTIONS*	SHORT TORSO OPTIONS*	INSEAM
CXS	23-25	21-22	23-25	37-42	39-44	35-40	18
CS	25-27	22-23	24-26	40-45	42-47	38-43	20
CM	26-28	23-24	25-28	43-48	45-50	41-46	22
CL	29-31	25-26	29-32	46-51	48-53	44-49	25
CXL	32-34	27-28	33-36	49-54	51-56	47-52	28
AXS	34-36	26-27	32-34	52-57	54-59	50-55	26
AS	36-38	28-29	34-35	55-60	57-62	53-58	28
AM	38-40	30-31	35-36	58-63	60-65	56-61	30
AL	40-42	32-33	36-37	61-66	63-68	59-64	32
AXL	42-44	34-35	37-39	64-69	66-71	62-67	34
A2XL	44-46	36-37	38-40	67-72	69-74	65-70	36
A3XL	46-48	38-39	39-41	70-75	72-77	68-73	38
A4XL	48-50	40-41	40-42	73-78	75-80	71-76	40

Special Order Sizes For Men's Warm-Ups

ADULT: XS - S - M - L - XL - 2XL - 3XL
CHILD: XXS - XS - S - M - L

RELAXED WARM-UP BOY'S/MEN'S JACKET PANTS				
ALL SIZES				
SIZE	CHEST	WAIST	HIP	INSEAM
CXXS**	20-22	21-22	20-22	19
CXS	22-24	22-23	22-24	21
CS	24-26	23-24	24-26	23
CM	26-28	24-25	26-28	25
CL	28-31	25-26	28-30	28
AXS	31-34	27-29	30-32	30
AS	34-36	30-31	32-34	31
AM	36-38	32-33	34-36	32
AL	38-40	34-35	36-38	33
AXL	40-42	36-37	38-40	33
A2XL	42-44	38-39	40-42	33
A3XL	44-46	40-41	42-44	33

UNISEX WARM-UPS (WUJ02G, WUJ03G, WUJ01G)			
ALL SIZES			
SIZE	CHEST	WAIST	HIP
YXS	23-25	25	27.5
YS	26-28	26	29.5
YM	29-30	27	31.5
YL	31-33	28-30	33.5
XS	32-34	29-30	34.5
S	34-36	30-31	35-37
M	36-38	32-34	37-40
L	38-40	35-37	41-43
XL	42-44	38-40	43-45
2XL	46-48	40-42	46-48

*Long and Short torso options available for an additional cost and not available on stock apparel

** Select styles are offered in CXXS

ADDITIONAL INFORMATION

GK Men's Competitive Wear

GK offers more styles, fabrics and colors to give you more variety than any other manufacturer. Pricing for all fabric combinations can be found in the Men's Competitive Price List or to view your pricing online, go to www.gkelite.com and log in to view your team pricing.

ORDERING INFORMATION

Special Orders can now be placed by mail, phone or online. If placing your order by phone, please be prepared to finalize your order by providing your payment information.

ESTIMATED PRODUCTION TIME

Production times are estimated and subject to change due to the daily volume of orders we receive. Ship weeks are assigned based on receipt of your complete, accurate, and approved order and your required deposit. Production will not begin and a ship week will not be assigned until the order deposit has been received. For current production times, prior to placing your order, call 1-800-345-4087 or visit our website at www.gkelite.com. Estimated production times do not include delivery time to your location. Please allow additional time for delivery. Complete and accurate orders received during non-business hours will be dated for the next business day.

* Embellishments may require additional production time. Custom designs will require additional time due to the complexity of the custom design process. If payment for the balance of your order is not received at least seven days prior to your planned ship date, your order will be delayed.

RUSH SERVICE

Rush service may be available on all styles for a 25% rush fee and priority shipping. Prior authorization is required by GK.

Please call customer service for more information.

Programs

EARLY BUY DISCOUNT

Contact your local Sales Representative to learn about the GK Early Buy Program.

SAMPLE APPAREL PROMO

GK offers a FREE sample apparel program, so you can try your apparel before placing your team order.

SUBLIMATION

GK provides the highest quality sublimation to develop your own custom look.

Partners

SUPPORTS YOUR SPORT

GK is passionate about the sport of gymnastics and supporting all hardworking athletes. For over 35 years, GK has been outfitting teams with the best fitting apparel in the world. GK truly is the Choice of Champions with an amazing roster of athletes including Simone Biles, Jordan Chiles, Sunisa Lee, Yul Moldauer and Shane Wiskus. GK is also honored to outfit some of the best National Teams world wide including Gymnastics Canada, Gymnastics Australia, Netherlands and so many more!

Products

DESIGNED IN THE USA

GK has been the leader in gymnastics apparel for over 35 years and manufacturers and sells more gymnastics apparel than any other company in the world. We are proud that our products are designed in the USA.

QUALITY

GK systematically monitors and evaluates the fit, fabrics and embellishments of each and every garment that leaves our facility, so you receive the very best gymnastics products.

FIT

We pride ourselves in manufacturing the best fitting gymnastics apparel in the world.

CUSTOMER SERVICE

GK has the largest customer service and outside sales force in the industry devoted solely to the sport of gymnastics.

VARIETY

GK has the largest selection of in stock gymnastics garments, including team apparel that coordinate your practice and competitive wear.

RELIABLE DELIVERY

GK manufactures locally, so we can ship your competitive apparel on time, every time.

VISIT GKELITE.COM TODAY!

Design & Buy With UDesign360®

- › New styles have been added!
- › Select your styles, fabrics, embellishments, and more and see your competition shirt design come to life!
- › UDesign360 is available on desktop, tablet and mobile
- › Save and share your design with your team
- › Select Men's apparel only

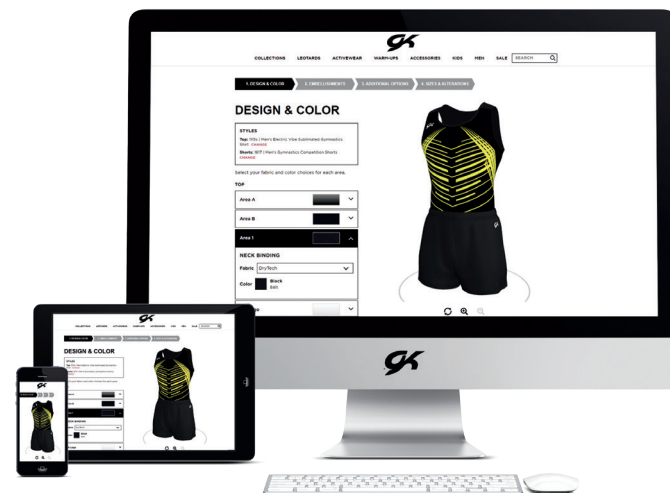
STOCK STYLES ALSO AVAILABLE!

- › With real time availability and inventory, gkelite.com has everything you need. From competition shirts and bottoms, to apparel, to accessories you can quickly find and buy what you need to outfit your team!

Need Assistance?

Contact our Customer Engagement team or your GK Sales Representative to help you place your order!

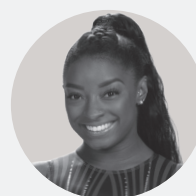
- › 1-800-345-4087 or custserv@gkelite.com
- › Find a Sales Rep:
gkelite.com/pages/gk-gym-us-sales-team



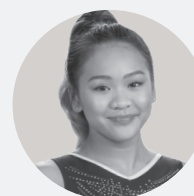
GK would like to thank all the gymnastics centers and athletes that helped make this collection and catalog possible.

World Champions Centre - Spring, TX
Prestige Gymnastics - Lancaster, PA
Parkettes Gymnastics - Allentown, PA
Cincinnati Gymnastics - Cincinnati, OH
Kinetic Gymnastics - Colorado Springs, CO

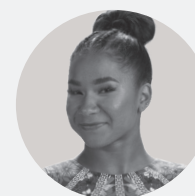
GK is proud to be worn by some of the biggest names in gymnastics. Check out Team GK at gkelite.com



Simone Biles



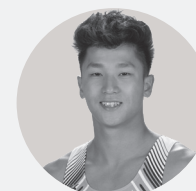
Suni Lee



Jordan Chiles



Shane Wiskus



Yul Moldauer

EMBRACE.

The logo consists of a stylized, bold, black 'G' and 'K' intertwined. The 'G' is on the left, with a small registered trademark symbol (®) to its lower left. The 'K' is on the right, with a small registered trademark symbol (®) to its lower right.

ELITE SPORTSWEAR
1.800.345.4087