



Be Extraordinary.



# Embrace the Extraordinary.

At GK, to "Be Extraordinary" is to defy limits and exceed expectations, both on the mat and beyond. Our mission extends to supporting athletes' ambitions with extraordinary apparel that blends passion, authenticity, and relentless innovation. With GK, athletes not only rise to challenges but also set new benchmarks of excellence, showcasing their journey in every performance. We commit to serving their dreams with the finest gymnastics wear, inspiring them to soar higher and shine brighter.



# Extraordinary Innovations

THE LATEST IN GK FABRICS AND EMBELLISHMENTS

"Be Extraordinary" is more than a phrase; it's the core of our design philosophy that comes to life in our expansive selection of fabrics and embellishments. Discover the latest hues and textures in our 2024 Collections, each elevating athletic performance with style.

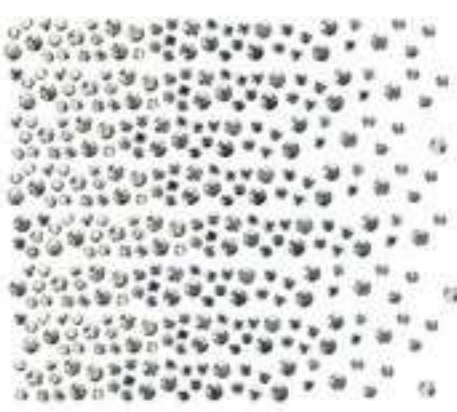


SOFTLUX

## *SoftLux*

REDEFINING COMFORT AND PERFORMANCE

Introducing SoftLux, our latest innovation in fabric technology, designed to redefine comfort and performance for athletes. This buttery-soft fabric boasts exceptional moisture-wicking properties, ensuring athletes stay dry and comfortable under the spotlight. Available in a palette of captivating colors including White, Black, Red, Berry, Periwinkle, Royal, Navy, and Grey. SoftLux is our softest fabric yet, and is set to become the new standard in athletic wear.



SWAROVSKI CRYSTALS

## *Extraordinary Shimmer*

CRYSTAL EMBELLISHMENTS

To add that extra sparkle, our range of crystals, both Standard and Premium, offer options for shimmer at any price point. New Standard Crystals like Citrine, Gold Brilliance, Turquoise Shimmer, Sky Blue, Metallic Silver, Metallic Gold, Mango, and Midnight bring a diverse palette for customization. For those seeking a more luxurious touch, our Premium Swarovski® Crystals, including a new Coral tone and expanded sizes in White Pearl, offer an upscale shimmer that's second to none.



SMOCKED MESH

## *Textural Elegance*

SMOCKED MESH AND NOVELTY RIB

In our quest to "Be Extraordinary," we introduce Smocked Mesh, a black, textured sheer fabric that adds depth, dimension, and brings a dramatic flair to select designs. Similarly, our Novelty Rib fabric, now available in Red and White, is known for its super soft feel and trendy appeal, adding a unique texture to the leotard, enhancing both look and wearability.

Visit pages 123-131 for all embellishment and fabric options.



# Table of Contents

vi	Women's Special Order Competitive Leotards
xii	Special Order Simone Biles Legacy Collection
xvi	Women's Special Order Warm-Ups
xx	Women's Special Order Acro & Tumbling
xxiv	Women's Special Order Sublimation
xxviii	Women's Stock Training Leotards
xxix	Women's Stock Brandable Basics
xxxi	Unite For Her
xxxii	Women's Stock Competitive Leotards
xxxiii	Women's Stock Warm-Ups
xxxv	Men's Special Order Competitive Apparel
xxxviii	Men's Special Order Sublimation
xxxix	Men's Special Order Warm-Ups
xl	Men's Stock Competitive Apparel
xli	Men's Stock Warm-Ups
xlii	Accessories
xliii	Embellishments & Fabrics
xliiii	Sublimation Style Options
xlvi	Size Charts



# Women's *Special Order* Competitive Leotards

Our extensive collection of *Special Order* Competitive Leotards allows you infinite possibilities! to select a stunning design, then customize it by selecting your team colors, fabrics, embellishments, and more. These leotards are made-to-order and carefully handcrafted in the USA, ensuring a level of artistry and precision that defines OK. With every stitch, it is our mission to provide you with the quality and customized look you need to Be Extraordinary every time you take the mat.





New!

# Opulent Aura

Competition Leotard | 49525\*\*\*



NEW SUBLIMATION COLOR: APRICOT



WAIST FLATTERING JEWEL DESIGN

Scoop neck leotard in cherry blossom mystique, with light pink and apricot sublimation on white mesh.

**OPTIONS SHOWN:** Nude shadow/white lining under bodice, T3481, T3482, T3485, T3234 in Brilliance Premium Swarovski Crystals.





**NEW MOISTURE-WICKING  
FABRIC: SOFTLUX™**



**BINDING DETAILS INSPIRED BY  
HIGH-END FASHION**

Scoop neck leotard in new white SoftLux, white jacquard mesh, and oyster pearl mystique.

**OPTIONS SHOWN:** Brown shadowproof lining under bodice, T3506A, T3507A, T3484A, T3541A, T3542A in Gold Brilliance Standard Crystals.



*New!*

# Radiant Grace

Competition Leotard | 4956Azz



*Tell us it can't be done, and we'll do it.*



*New!*

# Midnight Momentum

Competition Leotard | 4954A02

## Details



NEW FABRIC: SMOCKED MESH IN WAIST AND NECKLINE



FLAT STITCHING FOR COMFORT



FIG 8 USA8 COMPLIANT KEYHOLE BACK

Scoop neck leotard in new black SoftLux with black smocked mesh, black mesh; and black velvet.

**OPTIONS SHOW:** Dark brown shadowproof lining under bodice, 1/2 sleeve, T3497, T3498, T3495, 314, 3538, 3833 in Brilliance Premium Swarovski® Crystals.



New!

# Apex

Competition Leotard | 7584 441



FLATTERING LINEAR DESIGN LINES



HIGH NECK WITH CLASP CLOSURE

High neck leotard in fuchsia primatex, blackberry mystique, and cherry blossom mystique with white mesh.

**OPTIONE SHOWN:** Nude shading/reflecting under bodice, 3/4 sleeve, T125A, T125B, T125A, T14A, T15A in Gold Brilliance Standard Crystal.



**NEW FABRIC COLOR:**  
LAVENDER PEARL MYSTIQUE



**WATERCOLOR PRINT ON BODICE  
& MESH SLEEVES**

Scoop neck leotard in light pink, ultra violet, and lavender sublimation on holotek and mesh with white mesh, lavender pearl mystique, and lavender primatex.

**OPTIONS SHOWN:** nude shadowproof lining under bodice, T300, T3502, T040 in Brilliance Premium Swarovski Crystals, T3503 in Peacock Brilliance and Premium Swarovski Crystals and T3485 in Brilliance and Peacock Brilliance Premium Swarovski Crystals.



**New!**

## Flourish

Competition Leotard | 49555488

*We've never met an impossible task we didn't like.*



New!

# Eternity

Competition Leotard | 9656-001

## Details



DROPPED SHOULDER



NOVELTY RIB FABRIC



ART DECO INSPIRED  
DESIGN LINES

Scoop neck leotard with light grey primatex, grey rib, grey mesh, slate mystique, and platinum sparkle.

**OPTIONS SHOW:** Nude shadowproof lining under bodice, 1/2 sleeve.  
T3536A, T3535A, T3534A, T3533A, in Brilliance-Standard Crystals, T3549A, T34A in Meraki,  
Silver Standard Crystals.



New!

# Mystic Haze

Competition Leotard | 76865A12



SUBLIMATED SOLID COLOR  
MESH SLEEVES



FIG & USAC COMPLIANT STRAPPY BACK  
FEATURING ASYMMETRICAL KEYHOLE

Scoop neck leotard in eggplant and spearmint sublimation on white opalescence and mesh, with eggplant pearl mystique, and sapphire velvet straps.

**OPTIONS SHOWN:** Nude shadowproof lining under bodice. T3523, T3526, T3525, T3527, T3528, 214, 31547, 31548 in Brilliance Premium Swarovski® Crystals.





MESH INSERT BACK DETAIL



CRYSTAL STAR PATTERN

V-neck leotard in periwinkle SoftLux, with cosmic blue mystique straps, and ocean mech.

**OPTIONS SHOWN:** Nude shadowproof lining under back panel, 3/4 sleeve, T3400, T3400, T3400, T3520, T3534, T6337 in Brilliance Premium Swarovski Crystals.



New!

# Prominence

Competition Leotard | 4953A01



*It's always your time to shine.*



New!

## Victorious

Competition Leotard | 76855.am

## Details



NEW SUBLIMATION COLOR: MATCHA



2-INCH TAPERED COLLAR WITH  
1" CLASP CLOSURE



FLAT STITCHING FOR COMFORT

High neck leotard in matcha and rainforest sublimation on mesh with seaglass primatex, and white primatex.

**OPTIONS SHOW:** Dark brown shadowproof lining under middle back, 3/4 sleeve, T3579, T3520, T3521, 214, 2545, 2546 in Peridot Shimmer Premium Swarovski Crystals.





*Agile. Dedicated. Enduring.  
And you're just getting started.*



New!

## Stellar

Competition Leotard | 76835.az

## Details



NOVELTY RIB FABRIC



FIG & USA6 COMPLIANT STRAPPY BACK

Scoop neck leotard in midnight and electric blue sublimation on mesh, with navy rib and fluorescent lime primatex straps.

**OPTIONS SHOWN:** nude shatterproof lining under bodice, 1/4 sleeves, T310, T391, T324, T343, 1/4 in Britanize Premium Swarovski Crystal.





A. 76755A02

### Energized Competition Leotard

V-neck leotard in white, blush and grey sublimation on holotek with white mystique and blush mystique.

Style coordinates with WL487C

**OPTIONS SHOWN:** 1/ Sleeves, T307, T318, T312 and 2/ in Brilliance Premium Swarovski Crystals



B. WL487SA01

### Energized Tank Leotard

V-neck leotard with white, blush, and grey sublimation on holotek with blush mystique.

Style coordinates with T376S

**OPTIONS SHOWN:** Team name on hip in Premium White Dye



**c. 76825A01**  
**Radiant Competition Leotard**

Scoop neck leotard in blush and oyster sublimation on subfuse with oyster pearl mystique and white mesh.

Style coordinates with WLQ285.

**OPTIONS SHOWN:** Nude shadowproof lining in front bodice, T3422, T3423, T3424, T3425, T3426, T3522, T3523 in Brilliance Premium Swimsuit Crystals.



**d. WL5285A01**  
**Radiant Tank Leotard**

Scoop neck leotard in blush, oyster and white sublimation on subfuse with oyster pearl mystique and white mesh.

Style coordinates with 76825.

**OPTIONS SHOWN:** 9C002774 in Brilliance Standard Crystals.



**A. 76785A01**

### Charming Competition Leotard

V-neck leotard in purple, berry, cherry, wildberry and peach sublimation on subfuse with berry mesh.

Style coordinates with WLS125.

**OPTIONS SHOWN:** Nude shadowproof lining under bodice, ¾ sleeves, T3286, T3297, T3288, 1/8 in Brilliance Premium Swarovski® Crystals.



**B. WLS125A01**

### Charming Tank Leotard

V-neck leotard in blush, hot pink, white and cherry sublimation on subfuse.

Style coordinates with T6783.

**OPTIONS SHOWN:** SSP12367 in Silver Hologram Springs™.



**C. 49515A01**

### Majestic Competition Leotard

Scoop neck leotard in nude, azalea, and blush sublimation on subfuse with fuchsia primatex and blush hyperlink.

Style coordinates with WLS255.

**OPTIONS SHOWN:** ¾ sleeves, T3304, T3407, T3408, T3320, 2 1/4 in Brilliance Premium Swarovski® Crystals.



**D. WLS255A01**

### Majestic Tank Leotard

Scoop neck tank leotard in nude, azalea, and blush sublimation on subfuse with fuchsia primatex and blush hyperlink.

Style coordinates with 49525.

**OPTIONS SHOWN:** 9C502772 in Brilliance Standard Crystals.



**E. 76765A01**

### Majestic Wonder Competition Leotard

V-back leotard in crimson and blush sublimation on mesh with crimson and blush sublimation on subfuse.

Style coordinates with WL5045.

**OPTIONS SHOW:** Brown shadowproof lining under bodice, T3271, T3272, T3273, T3274, and Dk in Brilliance Premium Swarovski® Crystals.



**F. WL5045A01**

### Majestic Wonder Tank Leotard

V-back leotard in crimson and blush sublimation on subfuse.

Style coordinates with 76765.

**OPTIONS SHOW:** 95F52300 in Silver Hologram Spangles™.



**G. 9655A01**

### Illuminating Competition Leotard

Scoop neck leotard in maroon mystique and black jacquard mesh with black primatex.

Style coordinates with WL5315.

**OPTIONS SHOW:** 1/2 sleeves, nude shadowproof lining under bodice, T3075, T3453, T3460, T3461, T3462, T3235 in Brilliance Premium Swarovski® Crystals.



**H. WL5315A02**

### Illuminating Tank Leotard

Scoop neck leotard in crimson, black, and flannel grey sublimation on white opalescence with maroon mystique and black primatex straps.

Style coordinates with 9655.

**OPTIONS SHOW:** 95F55601 in Silver Hologram Spangles™.





**A. 49475A01**

### Resilient Competition Leotard

Scoop neck leotard in eggplant and lavender sublimation on subfuse.

Style coordinates with WLS215.

**OPTIONS SHOWN:** T3104, T3385, T3386, & T14 in Peacock Brilliance Premium Swarovski® Crystals

**B. WLS215A01**

### Resilient Tank Leotard

Scoop neck leotard in eggplant and lavender sublimation on subfuse.

Style coordinates with 49475.

**OPTIONS SHOWN:** SH100105 in Metallic Silver Netheads.



**C. 49435A01**

### Wrapped N' Ruched Competition Leotard

V-neck leotard in eggplant pearl mystique with sublimation in eggplant and purple on mesh.

Style coordinates with WLS065.

**OPTIONS SHOWN:** Shadowproof lining (bodice), T3255, T3256, T3329, T14 and T607 in Peacock Brilliance Premium Swarovski® Crystals.

**D. WLS065A01**

### Wrapped N' Ruched Tank Leotard

V-neck leotard in eggplant and purple sublimation on mesh with eggplant pearl mystique.

Style coordinates with WLS35.

**OPTIONS SHOWN:** Nude shadowproof lining under bodice, T3361 in Brilliance Premium Swarovski® Crystals and custom logo.

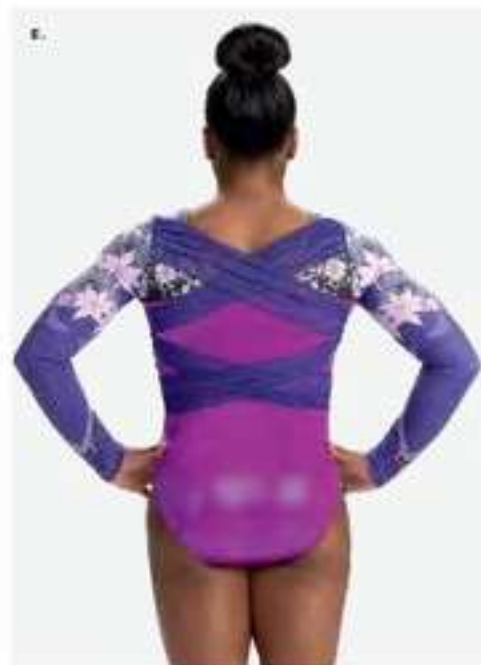
**E. 96445A01**

**Intricately Wrapped  
Competition Leotard**

Scoop neck leotard in wildberry, purple, white, black and flannel grey sublimation on subfuse with magenta pearl mystique and concord mesh.

Style coordinates with WLS095.

**OPTIONS SHOWN:** T3302, T3303, T3304, T3305, 314 and 320 in Peacock Brilliantz Premium Swarovski® Crystals.



**F. WLS095A01**

**Intricately Wrapped  
Tank Leotard**

Scoop neck leotard in wildberry, purple, white, black, and flannel grey sublimation on subfuse with magenta pearl mystique and concord mesh.

Style coordinate with 96445.

**OPTIONS SHOWN:** 95102364 in Silver Hologram Spangles™ and custom logo.





**A. 49425A01**

### Dancing Floral Competition Leotard

Funnel neck leotard with navy sublimation on aqua primatex.

Style coordinates with WL5005.

**OPTIONS SHOWN:** T3445, T3346 and T3347 in Brilliance Premium Seaworld® Crystals.



**C. 9653A01**

### Regal Competition Leotard

Scoop neck leotard in navy mesh and navy rib with keyhole back.

Style coordinates with WL529.

**OPTIONS SHOWN:** 3/4 sleeves, nude shadowproof lining under bodice, T3444, T3383, 3/4, T625, T626, 3/53, 3/554 in Brilliance Premium Seaworld® Crystals.



**D. WL529A01**

### Regal Tank Leotard

Scoop neck leotard in navy mesh and navy rib with keyhole back.

Style coordinates with 9653.

**OPTIONS SHOWN:** Nude shadowproof lining under bodice, 9C502775 in Brilliance Standard Crystals.

**e. 4948A01**

### Glowing Competition Leotard

Soft V-neck leotard in slate and black matte mystique with grey mesh and grey rib.

Style coordinates with WL522.

**OPTIONS SHOW:** ¾ Sleeve, nude shadowpool lining under bodice, T3589, T3390, T3391, T3335, J1507, 3/4 Entrance Premium Swarovski® Crystals.



**f. WL522A02**

### Glowing Tank Leotard

V-neck leotard in slate and black matte mystique with grey rib.

Style coordinates with 4946.

**OPTIONS SHOW:** 9C502771 in Brilliance Standard Crystals.



**g. 4946SA01**

### Unbreakable Competition Leotard

Scoop neck and V-back leotard in electric blue and midnight sublimation on subfuse.

Style coordinates with WL5205.

**OPTIONS SHOW:** ¾ Sleeves, T3378, T3379, T3380 & 214 in Brilliance Premium Swarovski® Crystals.



**h. WL520SA01**

### Unbreakable Tank Leotard

Scoop neck and V-back leotard in electric blue and midnight sublimation on subfuse.

Style coordinates with 4946.

**OPTIONS SHOW:** 05P15282 in Silver Hologram Spangles™.





**A. 9650A01**

### Interconnected Competition Leotard

High neck leotard in titanium hyperlink with white jacquard mesh.

Style coordinates with WLS85.

**OPTIONS SHOWN:** Brown shadowproof lining under bodice; T3257, T3356, T3359, T3260 and T5296 in Brilliance Premium Swarovski® Crystals.



**B. WLS15SA02**

### Interconnected Tank Leotard

High neck leotard in black and neon pink sublimation on subfuse with fluorescent pink primatex.

Style coordinates with 3450.

**OPTIONS SHOWN:** SSP12370 in Black Spangles™.



**C. 49445A02**

### Wild Flower Competition Leotard

V-neck leotard in bright turquoise, flannel grey, carbon, aqua and black sublimation on holotek.

Style coordinates with WLS105.

**OPTIONS SHOWN:** 3/4 sleeves, T3259, T3260, T5296, 3/4 and 3250 in Black Diamond Premium Swarovski® Crystals.



**D. WLS10SA01**

### Wild Flower Tank Leotard

Soft V-neck leotard in key lime, neon pink, fuschia, royal, and blue ribbon sublimation on subfuse.

Style coordinates with 49445.

**OPTIONS SHOWN:** SSP12365 in Silver Hologram Spangles™ and custom logo.

**E. 76655A01****Dazzled Competition Leotard**

Classic leotard in periwinkle pearl mystique with periwinkle and white sublimation on mesh with white sparkle hologram.

Style coordinates with WL4925.

**OPTIONS SHOWN:** 1/2 sleeves, nude shadowproof lining under bodice, T33046, T33047, T53048, T33049, T33055, J14, J1477 and J1478 in Brilliance Premium Swarovski Crystals.

**F. WL4925A01****Dazzled Tank Leotard**

Scoop neck leotard with evergreen and white sublimation on subfuse, black primatex, and evergreen mystique.

Style coordinates with 76655.

**OPTIONS SHOWN:** 95P80372 in Kelly Green Sparkles™.

**G. 49505A01****Trailblazer Competition Leotard**

Scoop neck leotard in light pink and blush on subfuse with rose pearl mystique and blush mystique.

Style coordinates with WLS245.

**OPTIONS SHOWN:** T3400, T3401, T3402, T3403, 2328 in Brilliance Premium Swarovski Crystals.

**H. WL5245A01****Trailblazer Tank Leotard**

Scoop neck leotard in light pink and blush sublimation on subfuse with rose pearl and blush mystique.

Style coordinates with 49505.

**OPTIONS SHOWN:** 95P8284 in Silver Hologram Sparkles™.





A. 76775A01

### Crisscross Stripe Overlay Competition Leotard

Soft V-neck leotard in black and white sublimation on subfuse with black matte mystique and black and white sublimation on mesh.

Style coordinates with WL5075

**OPTIONS SHOWN:** T3279, T3280, T3281 and T4 in Brilliance Premium Swarovski® Crystals.



B. WL5075A01

### Crisscross Stripe Overlay Tank Leotard

Soft V-neck leotard in black and white sublimation on subfuse with black matte mystique.

Style coordinates with 76775

**OPTIONS SHOWN:** 96P12362 in Silver Hologram Sparkles™.

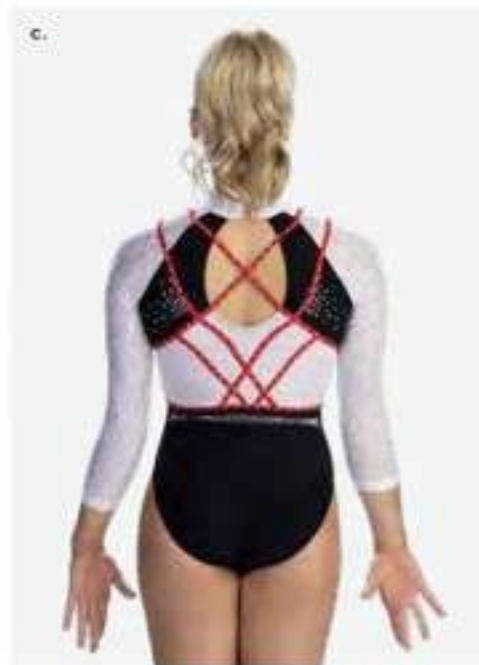


**c. 9648A02**  
**Strappy High Neck**  
**Competition Leotard**

High neck leotard in black ribbed nylon/  
spandex with white jacquard mesh and  
red primatex.

Style coordinates with WLS03.

**OPTIONS SHOWN:** 1/2 sleeve, nude shadowproof lining under  
bodice, T3340, T3341, T3342, T3343, T3344,  
and T1006 in: Brilliance Premium Swarovski® Crystals.



**d. WLS03A02**  
**Strappy High Tank**  
**Leotard**

Scoop neck leotard in black ribbed nylon/  
spandex and black mesh with fluorescent  
lime primatex.

Style coordinates with 9648.

**OPTIONS SHOWN:** 96480036 in Silver Metallic; Nailheads.





**A. 76665A01**  
**Empress Competition Leotard**

High neck leotard in navy and red sublimation on white mesh with navy and red sublimation on subfuse with navy pearl mystique.

Style coordinates with WJ4815.

**OPTIONS SHOWN:** Nude shadowproof lining under bodice, T3056, T3057, T3058, T3059, T3060, T3065, and T1479 in Brilliance Premium Swarovski® Crystals.



**B. WL4815A01**  
**Empress Tank Leotard**

Keyhole back leotard with black and white sublimation on subfuse with black matte mystique.

Style coordinates with T1665.

**OPTIONS SHOWN:** 85205809 in Silver Matte Sponglez™

c. 7679SA01

### Dynasty Competition Leotard

Soft V-neck leotard in midnight and periwinkle sublimation on subfuse and mesh with periwinkle pearl mystique.

Style coordinates with WL515.

**OPTIONS SHOWN:** Brown shadowproof lining under bodice, T3291, T3293, T3294, T3295, T3296 and T3500 in Periwinkle Premium Seawater® Crystals.



d.



d. WL511SA01

### Dynasty Tank Leotard

V-neck leotard with black and red sublimation on subfuse with red primatex.

Style coordinates with 76795.

**OPTIONS SHOWN:** 95492368 in Silver Hologram Spangles™.

e. 9649SA01

### Cold Shoulder Competition Leotard

Scoop neck leotard with black sublimation on red primatex and black opal mesh.

Style coordinates with WL515.

**OPTIONS SHOWN:** 1/2 sleeves, shadowproof lining (bodice only), T3350, T3351, T3352, T3357, T3358 and 2 1/4 in Brilliance Premium Seawater® Crystals.



f.



f. WL513SA01

### Cold Shoulder Tank Leotard

Scoop neck leotard in navy sublimation on seaglass primatex with navy fairy mesh.

Style coordinate with 96495.

**OPTIONS SHOWN:** 95492368 in Silver Hologram Spangles™ and custom logo.



**A. 76815A02**  
Distinguished Competition Leotard

Soft V-neck leotard in red and black sublimation on white opalescence with black mesh and scarlet pearl mystique.

Style coordinates with WL5275.

**OPTIONS SHOWN:** Nude shadowseam® lining under bodice, T347, T348, T349, T350, T351 in Brilliance Premium Swarovski® Crystals.



**B. WL5275A02**  
Distinguished Tank Leotard

Soft V-neck leotard in red and black sublimation on white opalescence.

Style coordinates with 76815.

**OPTIONS SHOWN:** SC502773 in Brilliance Standard Crystals.

**c. 49385ae1**

**High Neck Royale Competition Leotard**

High neck leotard in black and red sublimation on white mesh with paprika opalescence, black mesh, and black mystique.

Style coordinates with W4865.

**OPTIONS SHOWN:** 13073, 13074, 13075, 13407 and 13402 in Brilliance Premium Swarovski® Crystals.



**b. WL4865ae1**

**High Neck Royale Tank Leotard**

High neck leotard with black and red sublimation on mesh with paprika opalescence hologram and black mesh straps.

Style coordinates with 49385.

**OPTIONS SHOWN:** Single row team name on back in Brilliance Premium Swarovski® Crystals.





**A. 7664A01**  
Spectacular Shadows  
Competition Leotard

Scoop neck leotard in black jacquard mesh with black matte mystique and platinum sparkle hologram with nude mesh.

**OPTIONS SHOWN:** Nude shadowproof lining under bodice, T3039, T3040, T3041, T3037, T3042, T3043, T3045, 114, 31475, and 31476 in Brilliance Premium Swarovski® Crystals.



**B. 76645A01**  
Sublimated Spectacular Shadows  
Competition Leotard

Scoop neck leotard in royal and grey sublimation on mesh with cosmic blue mystique, pacific opalescence hologram, and white mesh.

**OPTIONS SHOWN:** Nude shadowproof lining under bodice, 1/2 sleeves, T3033, T3034, T3035, T3036, T3042, T3038, T3044, 114, 31475, and 31476 in Metallic Silver Premium Swarovski® Crystals.

**C. 49355A01**  
Ruched Bodice Competition Leotard

V-neck leotard in navy mesh, navy mystique, white to navy sublimation on mesh, and white sparkle.

**OPTIONS SHOWN:** Nude shadowproof lining under bodice, T5017, T0460, T101, T102, 114, J1845, and 30346 in Brilliance Premium Swarovski® Crystals.

**D. 2008A04**

### Basic Boat Neck Competition Leotard

Classic leotard in scarlet pearl mystique.

**OPTIONS SHOWN:** 314 and 5471 in Brilliance Premium; Swarovski® Crystals.



**E. 9651A01**

### Poised Competition Leotard

High neck leotard in black matte mystique, black primatex and black mesh with black velvet.

**OPTIONS SHOWN:** Nude shadowproof lining under bodice; T53429, T53430, T5431, 314 in Brilliance Premium; Swarovski® Crystals.



**F. 9652SA01**

### Enchanting Competition Leotard

High neck leotard in white and grey sublimation on white mesh with white primatex.

**OPTIONS SHOWN:** 1/2 sleeves, brown shadowproof lining under bodice; T3441, T3445, T3436, T3437, T3438, T3439 in Brilliance Premium; Swarovski® Crystals.



**G. 9646A02**

### Intergalactic Competition Leotard

V-back leotard in grey primatex with platinum sparkle hologram and white opal mesh with smoke pearl mystique.

**OPTIONS SHOWN:** 1/2 sleeves, nude shadowproof lining under bodice; T3325, T3326, T3325, T3326, T3328, 314, T3508 and T3509 in Brilliance Premium; Swarovski® Crystals.





**A. 4883A01**

### Twisted Competition Leotard

Soft V-neck leotard in seafoam pearl mystique, silver mystique, and smoke pearl mystique.

**OPTIONS SHOWN:** T029, T039 and T108 in Brilliance Premium Swarovski® Crystals.



**B. 10014SA01**

### Rising Corner Competition Leotard

V-neck leotard in black mystique, seafoam pearl mystique, and black to honeydew sublimation on mesh.

**OPTIONS SHOWN:** Nude shadowproof lining under bodice, T170, T174 and T14 in Brilliance Premium Swarovski® Crystals, T152, T156 and T159 in Peridot Shimmer Premium Swarovski® Crystals.



**C. 4945SA01**

### Level Up Competition Leotard

Scoop neck leotard in carbon, black, flannel grey, neon yellow, and white sublimation on subfuse with fluorescent yellow primatex.

**OPTIONS SHOWN:** T368, T369 and T370 in Vivant® yellow Premium Swarovski® Crystals, T14 in Black Premium Swarovski® Crystals.



**D. 7659A03**

### Illuminated Competition Leotard

V-neck leotard in black matte mystique, fluorescent lime mystique, and smoke pearl mystique.

**OPTIONS SHOWN:** 1/2 sleeves, T264, T266, T268, T269, T14 and T143 in Clear Premium Swarovski® Crystals.



E. 96545A01

### Awestruck Competition Leotard

Soft V-neck leotard in spruce sublimation on subfuse, seaglass primatex, and dark teal mystique with black mesh.

**OPTIONS SHOWN:** Brown shadowproof lining under bodice, T3449, T3450, T3451, T3452, T3453, T3454, J5521, J8228 in Brilliance Premium Swarovski® Crystals.



F. 9645A01

### High Wrapped Ruched Competition Leotard

High wrapped ruched neckline leotard in black matte mystique with black mesh and black ribbed nylon/spandex.

**OPTIONS SHOWN:** Nude shadowproof lining under bodice, T3508, T3509, T3510, T3511, T3512, T3234, J5521, J5522 and J5532 in Brilliance Premium Swarovski® Crystals.



G. WL4775A01

### Lacy Luxury Tank Leotard

V-back leotard with navy and white sublimation on subfuse.

**OPTIONS SHOWN:** WH00042 in Silver Metallic Nailheads.



# THE LEGACY COLLECTION

by Simone Biles

Simone Biles has truly built a name for herself in the sport of gymnastics. From her skills and dedication, to her resilience and her fashion, the Legacy of Simone Biles has been built and continues to evolve. Grow your team's Legacy by selecting a stunning one-of-a-kind competitive or tank leotard from the Legacy by Simone Biles collection and customizing it with your team's colors.



**A. 12075A01**

### Everlasting Competition Leotard

Scoop neck leotard in aqua and white sublimation on subfuse with white jacquard mesh and aquamarine mystique.

Style coordinates with WL5325.

**OPTIONS SHOWN:** T3445, T3446, T1530, T531, T532 in Brilliance Premium Swarovski® Crystals.

**B. WL5325A01**

### Everlasting Tank Leotard

Scoop neck tank leotard in aqua and white sublimation on subfuse with white jacquard mesh and aquamarine mystique.

Style coordinates with 12075.

**OPTIONS SHOWN:** 92P5788 in Silver Hologram Sparkle™.

c. 12005A01

### Go For Gold Competition Leotard

High neck leotard in white and black sublimation on subfuse with white mesh and white primatex featuring fluorescent orange mystique accents.

Style coordinates with WL4975.

**OPTIONS SHOWN:** Brown shadowproof lining under bodice, 1/4 sleeve, T3206, T3210 in Vibrant Orange Premium Swardowski Crystals, T3216, T3212, T3213, T3214 in Brilliance Premium Swardowski Crystals, T1403 and T1404 in Vibrant Orange Premium Swardowski Crystals.



d.



d. WL4975

### Go For Gold Tank Leotard

Keyhole back tank leotard in white, black, and tangerine sublimation on subfuse with fluorescent orange mystique binding.

Style coordinates with 12005.

**OPTIONS SHOWN:** 95F8232 in Silver Glossy Spangle™.

e. 12095A01

### Fearless Competition Leotard

Scoop neck leotard in peach, sangria, black, aqua, berry, and coral sublimation on subfuse with black mesh and black primatex.

Style coordinates with WL5345.

**OPTIONS SHOWN:** T3475, T3476, T3477 in Brilliance Premium Swardowski Crystals.



f.



f. WL5345A01

### Fearless Tank Leotard

Scoop neck tank leotard in peach, sangria, black, aqua, berry, and coral sublimation on subfuse with black primatex.

Style coordinates with 12095.

**OPTIONS SHOWN:** 95F8600 in Silver Heligorn Spangle™.



**A. 12025A01**  
**Living a Legacy Competition Leotard**

High neck leotard with black sublimation on periwinkle primatex, brown and periwinkle sublimation on mesh, with black mesh and black primatex.

**OPTIONS SHOWN:** ¾ sleeves: T3223, T5014, T3225, T3226, and T3227 in Brilliance Premium Swarovski Crystals.



**B. 12055A01**  
**Elite Competition Leotard**

Mock neck leotard in black and white sublimation on holotek with white mesh.

**OPTIONS SHOWN:** Shadowproof lining (bodice only), T3364, T3367, T3368, T3369, T3370, T3371 and T3372 in Brilliance Premium Swarovski Crystals, T3377 in Black Premium Swarovski Crystals.



# Women's *Special Order* Warm-Ups

Complete your competition look with warm-up jackets and bottoms in your team colors. With a large assortment of styles, GK offers options for athletes and coaches.



**A. 8813A02**  
**Cropped Drytech Jacket**

Warm-up jacket in navy and white drytech.

**OPTIONS SHOWN:** Team name on back in Brilliance Premium Sakrovel® Crystals.

**b. 8717A20**

### Classic Warm-Up Jacket

Fitted jacket in berry drytech.

**OPTIONS SHOWN:** Laser jewel along zipper, Brilliance Premium Swarovski® Crystals on sleeves, and team name on back in Silver Hologram Spangle™.



**c. 8756A10**

### Sporty Spade Fitted Jacket

Warm-up jacket in white and graphite drytech.

**OPTIONS SHOWN:** Laser jewel along zipper and team name in Brilliance Premium Swarovski® Crystals on back.





**A. 8794A01**

**Sleek & Sporty Warm-Up Jacket**

Warm-up jacket in white drytech and true navy drytech with red mystique.

**OPTIONS SHOWN:** Custom team name on back in Metallic Silver Imprint.



**B. 8794A02**

**Sleek & Sporty Warm-Up Jacket**

Warm-up jacket in black drytech with merlot mystique and white mystique.

**OPTIONS SHOWN:** Custom team name on back in Clear Premium Swarovski Crystals.

**C. 8811A01**

**Seamless Drytech Jacket**

Seamless drytech warm-up jacket in red hot, white, and black drytech.

**OPTIONS SHOWN:** Team name on back in Brilliance Premium Swarovski Crystals.



D. 8805A01

### Side Panel Fitted Jacket

Fitted jacket in sapphire and neon green drytech with navy campus performance mesh.

**OPTIONS SHOWN:** Custom team name in Brilliance Premium Swarovski Crystals on back.



E. 8777A01

### Side Profile Fitted Jacket

Fitted jacket in white and black drytech.



F. 8709A01

### Athletic Elite Pullover Jacket

Fitted quarter-zip jacket in black drytech and berry drytech.

**OPTIONS SHOWN:** Knockout logo in Black Standard Crystals.



G. 8709A02

### Athletic Elite Pullover Jacket

Warm-up jacket in black drytech and jet opalescence hologram.

**OPTIONS SHOWN:** Knockout logo in Silver Hologram Sparkle™.





**A. 8806A01**  
**Drytech Capri**  
Shin-length drytech capri in navy.

---



**B. 8804A01**  
**Fitted Drytech Warm-Up Leggings**  
Warm-up legging in black drytech and black mesh.

---



**C. 8804A02**  
**Fitted Drytech Warm-Up Leggings**  
Warm-up legging in navy and white drytech.

---



**D. 8804A03**  
**Fitted Drytech Warm-Up Leggings**  
Fitted legging in black drytech and imperial purple opalescence.

**e. 8788A01**  
Fitted Workout Leggings  
Fitted legging in navy drytech.

---

**f. 8788A02**  
Fitted Workout Leggings  
Fitted legging in black matte mystique.

---



**c. 8254A01**  
Warm-Up Pant  
Warm-up pant in black drytech.

---

**h. 8731A09**  
Low Rise Fitted Warm-Up Pant  
Warm-up pant in black drytech.

---



# Women's *Special Order* Acro & Tumbling

Introducing GK's Women's Acro and Tumbling line, where power and precision meet customizable perfection. Unleash your team's identity with fully customizable options, including team colors, logos, and individual athlete names and numbers. Take your performance from ordinary to extraordinary with apparel tailored to your team's unique spirit and style.



**A. Q5LTU**

**Shockwave Aero and Tumbling Jersey**

Long-sleeve jersey sublimated on performance polyester.

**OPTIONS SHOWN:** Team name in sublimation on front. Custom athlete last name and number in sublimation on back.



**B. SBC205**

**Lioness Aero and Tumbling Jersey**

Black primatex long-sleeve jersey sublimated on subfuse.

**OPTIONS SHOWN:** Team name in sublimation on front. Custom athlete last name and number in sublimation on back.



**C. Q5SHU**

**Shockwave Aero and Tumbling Shorts**

Black tumbling short with elastic waistband sublimated on performance polyester.



**D. SBC611**

**Lioness Aero and Tumbling Shorts**

Black primatex tumbling short with elastic waistband sublimated on subfuse.



# Women's *Special Order* Sublimation

Unleash creativity with the full spectrum of GK's sublimation options, ensuring standout style from pre- to performance.

## *Custom*

Transform imaginative ideas into reality with GK's Custom Sublimation, offering unique, personalized designs for your gymnastics apparel.

## *SoftLux & Primatex*

SoftLux and Primatex Sublimation bring unparalleled softness to your designs.

## *Engineered*

Engineered Sublimation offers an efficient process to design unique team look-alikes and warm-ups, bringing your team's spirit and competitive edge to the forefront.

See pgs. 137-139 for style options.



## Custom Sublimation

Craft a signature look with GK's Custom Sublimation, where your unique ideas take center stage on our premium custom apparel.



*New Prints!*

# SoftLux & PrimateX Sublimation

Our softest fabrics, SoftLux and PrimateX, elevate sublimation to luxurious heights, offering unparalleled comfort in a spectrum of vibrant colors.

See pgs. 133-137 for all available prints and color options.



A. SBP100A01  
Wrapped Wonder Print



B. SBP103A01  
Pixel Perfection Print



C. SBP102A01  
Star Studded Print

*New Print!*

# Engineered Sublimation

Engineered sublimation by OK streamlines the design process, making it effortless to customize leotards and warm-ups with your chosen prints and logos.

SEESBW Minimum 12 piece on final order. Gentle Dyeing Required and is non-irritating.

- \$42 per leotard sample
- \$27 per warm-up set
- \$40 per warm-up pant
- \$100 per warm-up set (jacket and pant)
- \$12 per parcel in lieu of sample

See pgs. 132-137 for all available prints and colors.



*New Print!*

**A. SBE100A01**  
Dotted Dimensions Print



*New Print!*

**B. SBE101A01**  
Brushed Beauty Print



*New Print!*

**C. SBE200A01 & SBE301A01**  
Dotted Dimensions Print



*New Print!*

**D. SBE200A01 & SBE301A01**  
Brushed Beauty Print





**e. SBE103A04**  
Soft Watercolor Print



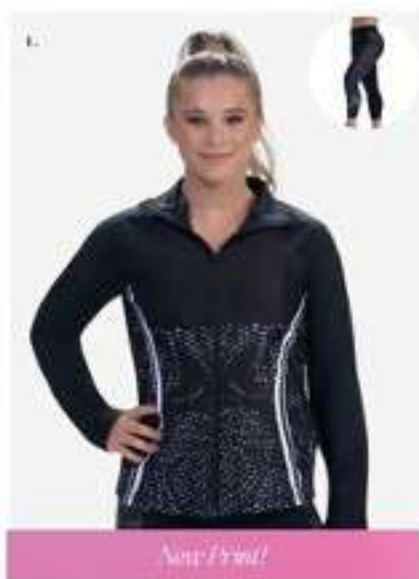
**f. SBE102A03**  
Athletic Appeal Print



**g. SBE102A04**  
Vertical Drip Print



**h. SBE200A01 & SBE301A01**  
Soft Watercolor Print



**i. SBE200A01 & SBE301A01**  
Athletic Appeal Print



**j. SBE200A01 & SBE301A01**  
Vertical Drip Print

# Women's *Stock* Training Leotards

GK offers a full line of competitive and training tank leotards that are ready to ship all year long. With options for additional embellishments, GK can outfit your team at any point during the year.





NEW!

# Emergence

Tank Leotard | 3917



FIG 8 USAG COMPLIANT STRAPPY BACK



WAIST FLATTERING EMBELLISHMENT

V-neck tank leotard in navy primatex, navy pearl mystique, and navy mesh with included Silver Hologram Spangles™.

**A. 3845**

### Meteor Sky Tank Leotard

Scoop neck tank leotard in navy mystique, navy mesh, and included Silver Hologram Spanglez™.



**B. 3901**

### Relentless Tank Leotard

Classic tank leotard sublimated on subfuse with included Silver Hologram Spanglez™.

This style is available for Special Order. Please use style WU6265.



**C. 3880**

### Composed Tank Leotard

V-neck tank leotard sublimated on holotek with included Silver Hologram Spanglez™.



A. 3824

### Delicate Blue Tank Leotard

Classic tank leotard sublimated on subfuse with mint julep mystique and included Silver Hologram Spanglez™.



B. 3896

### Aqua Glass Tank Leotard

V-neck tank leotard sublimated on subfuse with aqua primatex and included Silver Hologram Spanglez™.

This style is available for Special Order. Please use style WLS95.



C. 10529

### Flaming Core Tank Leotard

V-back tank leotard sublimated on holotek with spearmint pearl mystique and included Silver Hologram Spanglez™.



D. 10519

### Glitter Cove Tank Leotard

V-back tank leotard sublimated on holotek with black mystique and included Silver Hologram Spanglez™.

e. 3910eoz

### Elevated Tank Leotard

Classic strappy back tank leotard sublimated on subfuse with seaglass primatex, seafoam pearl mystique and included Silver Hologram Spanglez™.

This style is available for Special Order. Please use style WLS395.



f. 3860

### Striking Contender Tank Leotard

V-neck sublimated tank leotard sublimated on subfuse with black campus stretchtek.

g. 3825

### Wanderlust Tank Leotard

V-neck tank leotard sublimated on subfuse and fluorescent lime mystique with included Silver Hologram Spanglez™.



h. 3899

### Striker Tank Leotard

Scoop neck tank leotard sublimated on holotek with fluorescent lime primatex and included Silver Hologram Spanglez™.



**A. 10S26**  
**Soft Burst Tank Leotard**

V-back tank leotard sublimated on subfuse with black nylon/spandex and included Silver Hologram Spanglez™.



**B. 10S20**  
**Magical Sweep Tank Leotard**

V-back tank leotard sublimated on subfuse with pacific opalescence hologram and included Silver Hologram Spanglez™.



**C. 3893**  
**Midnight Tank Leotard**

Classic tank leotard sublimated on subfuse with eggplant pearly mystique with black mesh and included Silver Hologram Spanglez™.

This style is available for Special Order. Please use style WL5095.



**D. 3905**  
**Influential Tank Leotard**

Classic tank leotard sublimated on subfuse with lavender primatex, eggplant pearly mystique and included Silver Hologram Spanglez™.

This style is available for Special Order. Please use style WL5245.



e. 3853

### Evening Trapeze Tank Leotard

Scoop neck tank leotard sublimated on holotek and black mesh with included Silver Hologram Spanglez™.



f. 10510

### Composite Tribute Tank Leotard

Scoop neck tank leotard sublimated on subfuse with vinca mystique and included Silver Hologram Spanglez™.



g. 10525

### Whimsical Evening Tank Leotard

V-back tank leotard sublimated on subfuse with imperial purple opalescence hologram and included Silver Hologram Spanglez™.



h. 10528

### Intertwined Sparkle Tank Leotard

V-back tank leotard sublimated on subfuse with white sparkle hologram and included Silver Hologram Spanglez™.





A. 3809

### Pink Rival Tank Leotard

V-neck tank leotard sublimated on subfuse with black nylon/spandex.



B. 3900

### Flowers in the Wild Tank Leotard

V-neck tank leotard sublimated on subfuse with included Silver Hologram Spanglez™.

This style is available for Special Order. Please use style WL5305.



WAIST FLATTERING STYLE LINES  
WITH TONAL ZIGZAG TRIM



INCLUDED SPANGLEZ™ DESIGN

Classic tank leotard in fuchsia primatex, fluorescent pink primatex, and cherry blossom mystique with included Silver Hologram Spanglez™.



New!

# Radiant Blossom

Tank Leotard | 3918

New!

# Shimmering Cascade

Tank Leotard | 3910\_028



FIG & USAG COMPLIANT STRAPPY BACK



ELEGANT SUBLIMATION PRINT WITH COMPLEMENTARY SPANGLER™ DESIGN

Classic tank leotard sublimated on subfuse with black primatex, merlot sparkle, and included Silver Hologram Spangler™.

**A. 3903**  
**Composed Tank Leotard**

V-neck tank leotard in burgundy primatex with black rib and merlot sparkle.

This style is available for Special Order. Please use style WL522.



**B. 3879**  
**Lacy Luxury Tank Leotard**

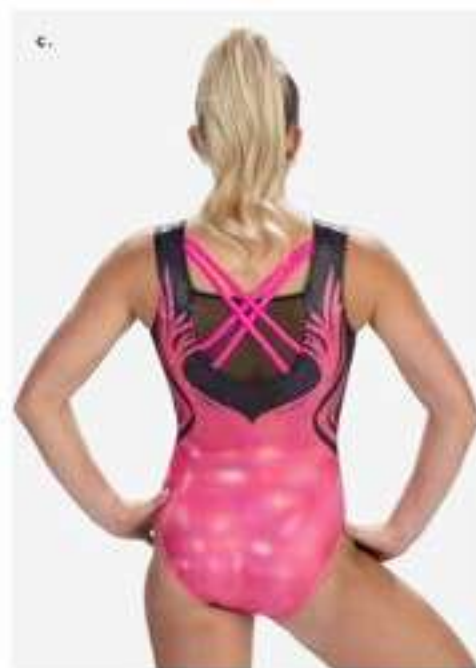
V-back tank leotard sublimated on subfuse with included Silver Hologram Spanglez™.

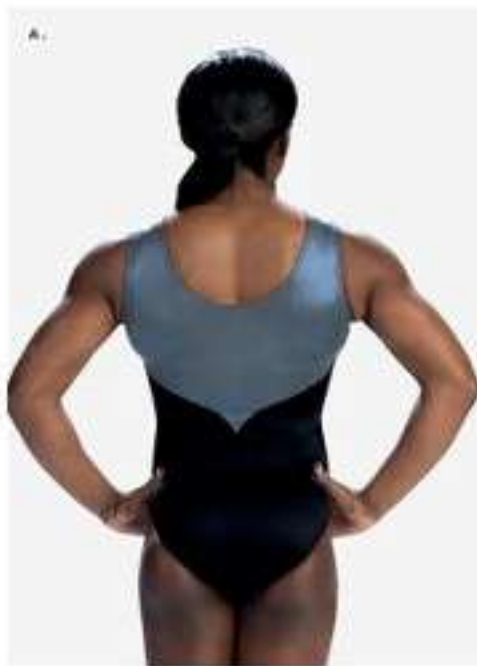
This style is available as Special Order. Please use style WL475.



**C. 3889**  
**Pink Flame Tank Leotard**

Strappy back tank leotard sublimated on holotek with fluorescent pink mystique, black mesh, and included Silver Hologram Spanglez™.





**A. 3856**  
**Chic Diamond Tank Leotard**

Classic tank leotard in black nylon/spandex and smoke pearl mystique with included Black Hologram Spanglez™ and Silver Hologram Spanglez™.



**B. 3892**  
**Blooming Beauty Tank Leotard**

V-neck tank leotard sublimated on subfuse with white opalescence hologram and included Silver Hologram Spanglez™.

**C. 3894**  
**Dazzling Brilliance Tank Leotard**

Classic tank leotard sublimated on grey primatax with black mesh and included Silver Matte Spanglez™.

This style is available for Special Order. Please use style WC385.



FIG & USA® COMPLIANT  
STRAPPY BACK



LASER CRYSTALS

Classic tank leotard sublimated on subfuge with smoke pearl mystique, black mesh, and included Brilliance Standard Crystals.



New!

# Titanium

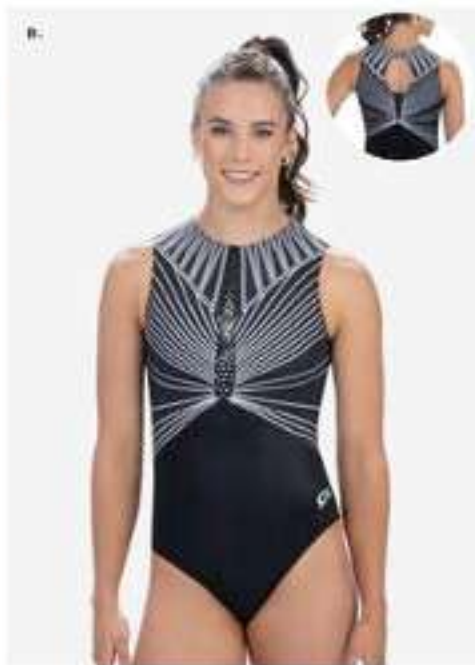
Tank Leotard | 3923



**A. 3902**  
**Unstoppable Tank Leotard**

Classic tank leotard sublimated on subfuse with included Metallic Silver Nailheads.

This style is available for Special Order. Please use style WL5215.



**B. 3884**  
**Enchantress Tank Leotard**

Classic tank leotard sublimated on subfuse with black matte mystique and included Silver Glossy Spanglez™.

This style is available as Special Order. Please use style WL4815.



**C. 3837**  
**Nightfall Tank Leotard**

Scoop neck tank leotard in jet opalescence hologram with included Clear Premium Swarovski® Crystals and black exposed elastic straps.

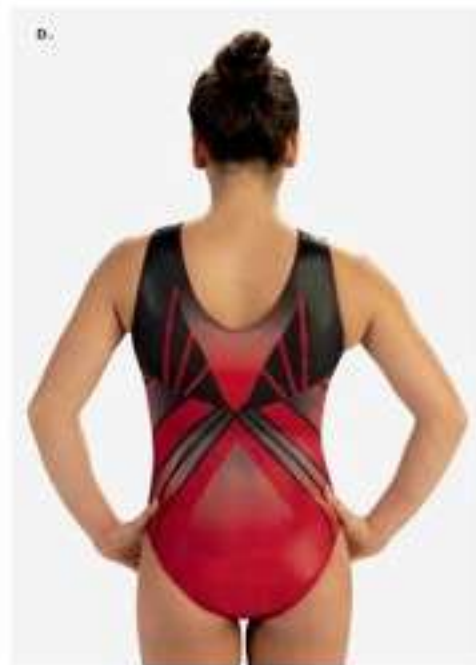


g. 3907

### Dedicated Tank Leotard

V-neck tank leotard sublimated on holotek, with included Brilliance Standard Crystals.

This style is available for Special Order. Please use style WLS215.



h. 3826

### Red Burst Tank Leotard

Scoop neck tank leotard in black mystique and red prism hologram with included Red Hologram Spangles™.



i. 3887

### Wondrous Red Tank Leotard

V-neck tank leotard sublimated on subfuse with red primatex and included Silver Hologram Spangles™.

# Women's Stock Brandable Basics

Our Women's Brandable Basics collection is designed with your team in mind. These handmade leotards are offered in a wide variety of styles, colors, and prints, and provide an affordable option to customize your look with logos, camp names, or embellishments.



**A. 391443A**  
**Marble Swirl Tank Leotard**

Scoop neck tank leotard sublimated on subfuse with periwinkle primatex and aquamarino mystique.

**OPTIONS SHOWN:** Single row team name in Marigold Standard Original.

**B. 3914824**  
**Marble Swirl Tank Leotard**

Scoop neck tank leotard sublimated on subfuse with magenta primatex and lavender pearl mystique.

**OPTIONS SHOWN:** Small embroidery on right hip in white thread.

c. 3922020

### Determined Dream Tank Leotard

V-neck tank leotard in burgundy, fuchsia, and lavender primatex.

**OPTIONS SHOW:** Butterfly embellishment (see page 126) in Silver Hologram Spangled™ on front with Team Brand Scaber in Silver Hologram Spangled™ and Pink Hologram Spangled™ on back.



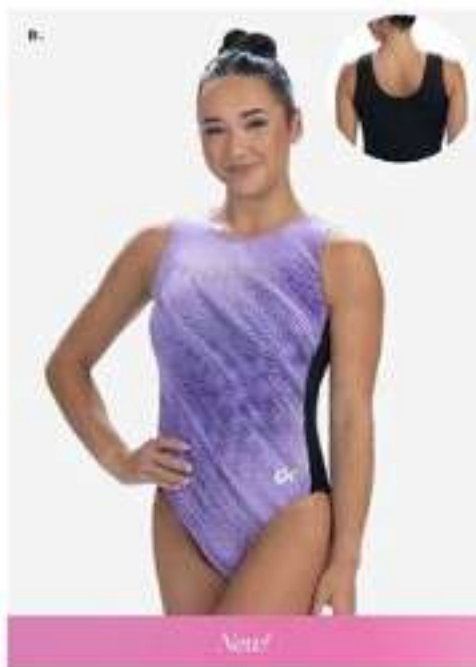
b. 3922114

### Determined Dream Tank Leotard

V-neck tank leotard in navy, seaglass, and fluorescent lime primatex.

**OPTIONS SHOW:** Small embroidery in lime green thread.





A. 3913-026  
Graceful Grit Tank Leotard

Scoop neck tank leotard sublimated on subfuse with black primatex.

**OPTIONS SHOWN:** Triple Row team name on back in Red Hologram Spangle™.

B. 3913-100  
Graceful Grit Tank Leotard

Scoop neck tank leotard sublimated on subfuse with black primatex.

**OPTIONS SHOWN:** Double Row team name in Clear Standard Crystals.



C. 3913-116  
Graceful Grit Tank Leotard

Scoop neck tank leotard sublimated on subfuse with black primatex.

**OPTIONS SHOWN:** Team name in glitter blue print.

D. 3858

### V-Neck Tank Leotard

V-neck sublimated tank leotard on holotek with black nylon/spandex.

**OPTIONS SHOWN:** Triple Row team name in Black, Holotek Spangle™

- Y38 Purple
- Y48 Royal
- Y58 Candy Apple
- Y58 Key Lime



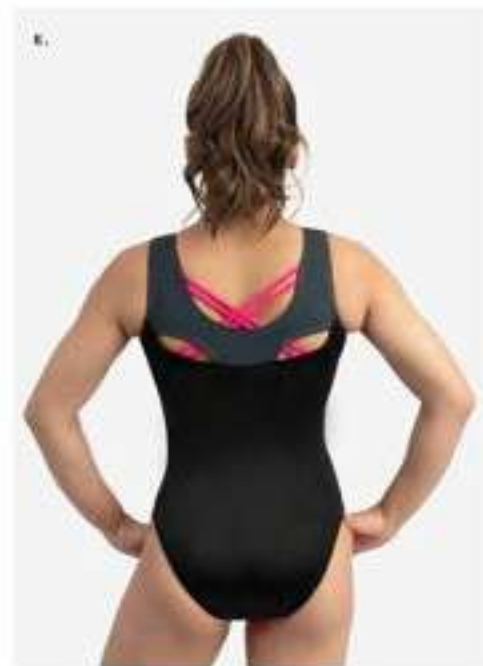
E. 3857

### Spaghetti Back Tank Leotard

Strappy back tank leotard in heather fabric, black nylon/spandex, and charcoal techmesh.

**OPTIONS SHOWN:** Double Row team name in Black Spangle™

- 81C Neon Pink Heather
- 000 Silver Heather
- 61C Dark Raspberry Heather
- 258 Turquoise Heather





**A. 3911**  
**Classic Racerback Tank Leotard**

Scoop neck tank leotard in primatex.

This style is available for Special Order. Please see style WLSM.

- |   |  |
|---|--|
|  196 Turquoise |  116 Navy   |
|  018 Black     |  160 Royal  |
|  078 Grey      |  148 Purple |
|  152 Red       |  |



**B. 3886**  
**Strappy Back Tank Leotard**

V-neck strappy back tank leotard in primatex with black primatex straps.

**OPTIONS SHOWN:** Custom lycra trim in Black Spanglex™.

- |  |  |
|--|--|
|  886 Navy |  148 Purple |
|  078 Grey |  015 Barbie |
|  152 Red  |  |

c. 201106  
**Classic Velvet Tank Leotard**

Classic velvet tank leotard in black.



d. 3456  
**Classic Mystique Tank Leotard**

Classic scoop neck mystique tank leotard.

- |                              |                               |
|------------------------------|-------------------------------|
| <b>AT8</b> Tealglass Sparkle | <b>F87</b> Electric Turquoise |
| <b>B81</b> Red               | <b>M27</b> Maroon             |
| <b>B84</b> Silver            | <b>O07</b> Substina           |
| <b>F21</b> Fanny             | <b>B36</b> Navy               |
| <b>F22</b> Black             | <b>L28</b> Steel              |
| <b>B82</b> Ocean             | <b>Q18</b> Imperial Purple    |



e. 2012  
**Scoop Back Tank Leotard**

Classic scoop neck nylon/spandex tank leotard.

**OPTIONS SHOW:** Team Brand star in Silver Modalis Nailheads

- |                     |                |
|---------------------|----------------|
| <b>Y88</b> Sapphire | <b>Y52</b> Red |
| <b>Q16</b> Black    |                |



f. 377206  
**Nylon/Spandex Tank Leotard**

Classic scoop neck nylon/spandex tank leotard in black.

**OPTIONS SHOW:** Team Brand - Negative Space in Silver Hologram Spangles™



# Unite For Her

GK is a proud partner of Unite for Her, a non-profit organization dedicated to enriching the health and well-being of those diagnosed with breast and ovarian cancers. With this year's Unite for Her leotard, GK is honored to donate 5% of sales to Unite for Her.

*GK is also a proud sponsor and apparel provider for the Pink Invitational.*



**A. BCA49**  
**Mystical Tank Leotard**

Classic tank leotard sublimated on subfuse.





**B. BCA47**  
**Pink Hope & Happiness Tank Leotard**

V-neck tank leotard sublimated on subfuse with fluorescent pink mystique.

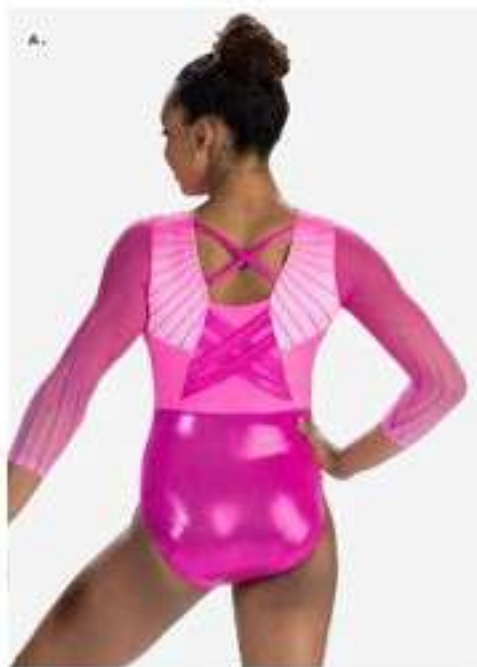


**C. BCA48**  
**Pink Pride Tank Leotard**

Classic tank leotard sublimated on subfuse with seaglass primatex and berry opalescence.

# Women's *Stock* Competitive Leotards

CK stands ready to outfit any team, at any time. These ready-to-ship leotards are the perfect solution for teams in need of immediate, top-quality looks. Designed with minimal embellishment to provide a sleek and versatile base, they offer the flexibility to add extra embellishments, ensuring your team can showcase its unique style effortlessly.



**A. 58635T**  
Virtuoso Competitive Leotard

¾ sleeve scoop neck leotard sublimated on subfuse and white mesh with berry mystique, fluorescent pink primatex, and included Brilliance Standard Crystals.

This style is available as Special Order. Please use style 76825.

**a. 5861ST**

### Starlit Competitive Leotard

¾ sleeve V-neck leotard sublimated on subfuse and white mesh with navy mystique and included Brilliance Standard Crystals.

This style is available as Special Order. Please use style 76775.



**c. 5860ST**

### Soaring Competitive Leotard

¾ sleeve V-neck leotard sublimated on subfuse with red mystique, black mesh, and included Brilliance Standard Crystals.

This style is available as Special Order. Please use style 76755.



**b. 5858ST**

### Black Elegance Competitive Leotard

¾ sleeve V-neck leotard in black mystique and smoke pearl mystique with a modified leg cut.



**e. 3457**

### Scoop Back ¾ Sleeve Mystique Competitive Leotard

¾ sleeve classic leotard with a modified leg cut.



# Women's *Stock* Warm-Ups

Select from a wide variety of warm-up jackets and bottoms to outfit your team.

Whether purchased as shown or with additional embellishments, GK provides quick turnaround times for stock warm-ups.





**A. W3001se**  
**Monochromatic Jacket**

Woven full-zip jacket with pockets and back mesh vent.

**OPTIONS SHOWN:** Team name in Black Premium Swarovski® Crystals.



**B. W3001se**  
**Monochromatic Jacket**

Woven full-zip jacket with pockets and back mesh vent.

**OPTIONS SHOWN:** Team name in Silver Swarovski®.



**A. WJ007016**  
**Cropped Bomber Jacket**

Cropped warm-up jacket with ribbed waistband and full zipper.

Style coordinates with WP001.

**OPTIONS SHOWN:** Team name in Balance Standard Crystals

**B. WP001016**  
**Drawstring Jogger Pant**

Jogger warm-up pant with a drawstring waist and pockets.

Style coordinates with WJ007.



**c. WU302G**  
Unisex Jacket

Warm-up jacket with pockets and elastic at bottom waistband and cuffs.

Style coordinates with WUP01G.

OPTIONS SHOWN: Knickout logo in Silver Hologram Spangler™.

- |                  |             |
|------------------|-------------|
| ● 016 Black      | ● 152 Red   |
| ● 222 Dark Green | ● 116 Navy  |
| ● 110 Maroon     | ● 180 Royal |

**b. WUP01G**  
Unisex Jogger Pant

Warm-up pant with elastic waistband and drawcord. Two hand pockets and two zippers at bottom leg opening.

Style coordinates with WU302G and WU005G.

- |                  |             |
|------------------|-------------|
| ● 016 Black      | ● 152 Red   |
| ● 222 Dark Green | ● 116 Navy  |
| ● 110 Maroon     | ● 180 Royal |





**A. WUJ03G**  
Unisex Colorblock Jacket

Colorblock warm-up jacket with hand pockets and two stripes on lower sleeves.

Style coordinates with WUP01G.

**OPTIONS SHOWN:** Team name in Distance Premium Swarovski Crystals.

- |                        |                    |
|------------------------|--------------------|
| VK2 Navy & White       | V05 Maroon & White |
| AK2 Black & White      | W41 Red & White    |
| VMS Dark Green & White | W02 Royal & White  |



**B. WUP01G**  
Unisex Jogger Pant

Warm-up pant with elastic waistband and drawcord. Two hand pockets and two zippers at bottom leg opening.

Style coordinates with WUJ02G and WUJ03G.

- |                |            |
|----------------|------------|
| 116 Navy       | 010 Maroon |
| 006 Black      | 182 Red    |
| 320 Dark Green | 160 Royal  |



c. WJ006xss  
Contoured Jacket

Fitted warm-up jacket in heather grey with full zipper.

OPTIONS SHOWN: Team name in Knockout logo (White Pearls).



d. WJ005g1e  
High Shine Jacket

Fitted black warm-up jacket in polyester/spandex with a full zipper and black high shine accents.

OPTIONS SHOWN: White imprint team brand on front and knockout logo in silver hologram 'spangle' on back.





**A. W9633016**  
**Full Zip Jacket**

Warm-up jacket in black polyester/spandex with thumbholes and zippered pockets with Chassé® logo.



**B. W9643**  
**Full Zip Stretch Jacket**

Warm-up jacket with metallic and white accents. Two zippered hand pockets and thumbholes with Chassé® logo.

-  VKS Black, White & Metallic Silver
-  VKS Black, White & Metallic Pink
-  VKS Black, White & Metallic Gold
-  VKT Black, White & Metallic Royal
-  VKS Black, White & Metallic Red

**C. SWU13016**  
**ActiveTek Warm-Up Jacket**

Zippered warm-up jacket in black activetek.

**OPTIONS SHOWN:** Team name in knitted White Pearl on back.

**5. SWU09**  
**Fitted DryTech Warm-Up Jacket**

Fitted warm-up jacket in white drytech.

**OPTIONS SHOWN:** Team name in Gallantia Premium  
Sawtooth Crystals on back.





**A. PTNK02**  
Crop Tie-Back Tank

Loose fitting cropped tank that ties at back with scoop neck.

**OPTIONS SHOWN:** Team logo in Black Standard Crystals.

- |                                    |                                 |
|------------------------------------|---------------------------------|
| <input type="radio"/> 188 White    | <input type="radio"/> 182 Red   |
| <input type="radio"/> VAS Charcoal | <input type="radio"/> 016 Navy  |
| <input type="radio"/> 018 Black    | <input type="radio"/> 180 Royal |



**B. PTNK01**  
Racerback Loose-Fit Tank

Racerback loose-fit tank.

**OPTIONS SHOWN:** Team name in Black Spangled™.

- |                                    |                                 |
|------------------------------------|---------------------------------|
| <input type="radio"/> VAS Charcoal | <input type="radio"/> 180 White |
| <input type="radio"/> 018 Black    |                                 |

**C. PBRA01**  
Keyhole Racerback Sports Bra

Racerback sports bra with keyhole back detail.

**OPTIONS SHOWN:** Team name in Brilliance Standard Crystals.

- |                                 |                                 |
|---------------------------------|---------------------------------|
| <input type="radio"/> 118 Black | <input type="radio"/> 182 Red   |
| <input type="radio"/> 018 Black | <input type="radio"/> 180 Royal |

0. 1449016

**Nylon/Spandex Mini Workout Short**

Workout short in black nylon/spandex.

0. E1323016

**Jeweled GK Nylon/Spandex Short**

Micro-mini workout short in black nylon/spandex with clear jeweled GK logo.

0. 1448016

**Velvet Micro Mini Workout Short**

Micro-mini workout short in black velvet.

0. 1426

**Comfort Fit Mystique Waistband Workout Short**

Micro-mini workout short in black nylon/spandex with mystique waistband.





**A. CB590**  
Perfect Fit Short

Low-rise drytech compression short with elastic waistband and 3 inch inseam.

● 018 Black ● 100 True Navy

**B. CB604**  
Mystique Compression Short

Mystique compression short with 3 inch inseam.

● 722 Black ● 902 Navy  
● 881 Red ● 018 Imperial Purple



**C. CB598014**  
High Waisted Fitted Short

Black high-rise drytech compression short with wide waistband 3 inch inseam.



**d. PS003ers  
High Shine Women's Short**

Solid woven short with stretch waistband and high shine binding. Includes built-in brief.



**e. PS001  
Campus Women's Short**

Solid woven shorts with contrast binding, elastic waistband, and drawstring. Includes built-in brief.

- 100 Navy
- 102 Red
- 108 Maroon
- 109 Royal
- 010 Black

**f. PSH02  
Retro Knit Short**

Knit short with contrast binding and elastic waistband.

- VAS Oxford
- 100 Navy
- 010 Black
- 109 Royal
- 102 Red



**A. PCAP01016**  
**High-Waisted Capri**

Black high-waisted capri with side pockets and bonded hem.

---

**B. 1678116**  
**Drytech Workout Capri**

Low rise capri in navy drytech.

---



**C. E2259016**  
**Black Drytech Capri Pant**

Black low rise capri in black drytech.

---

**D. PL003016**  
**High Shine Legging**

Black all-over high shine legging.

---



**e. 168101e**  
**ActiveTek Warm-Up Pant**

Fitted legging in black activetek with pockets.

---

**f. CB57401e**  
**¾ Performance Tight**

Low rise legging in black drytech with mesh detail.

---



**g. E235301e**  
**Black Drytech Tight**

Low rise legging in black drytech.

---

**h. W1970P01e**  
**Straight Leg Stretch Pant**

Straight leg, performance style warm up pant with wide waistband and Chassé® logo.

---



# Men's Competitive Apparel

Introducing GK's Men's Collection, where extraordinary design meets top-tier performance. Explore a range of styles crafted for comfort, durability, and unbeatable style. Whether you're gearing up for competition or practice, GK has the perfect fit for every male athlete.





# Men's *Special Order* Competitive Apparel

Discover the extraordinary fit and strong designs of GK's Men's Special Order Competitive Apparel. Elevate your team's look by selecting a distinctive shirt design, then customize it with your choice of colors and the addition of a name or logo.



**A. 11095A02**  
Digital Design Competition Shirt

Competitive shirt shown in steel, black, and white sublimation on polytek with white campus performance mesh back.

Paired with 812H\_Y06 in steel campus stretchtek.

**b. 11025A01**

### High Velocity Competition Shirt

Competitive shirt shown in white, carbon, and black sublimation on polytek with pewter inserts, black nylon/spandex piping, and white campus performance mesh back.

Paired with 18124\_06 in black campus stretchtek.

**OPTIONS SHOWN:** Custom imprinting in black.



**c. 11475A01**

### Everlasting Competition Shirt

Competitive shirt in crimson, white, and flannel grey sublimated on polytek with white campus performance mesh back.

Paired with 18124\_180 in white campus stretchtek.



**d. 11145A02**

### Striking Competition Shirt

Competitive shirt shown in white, black, grey, and aluminum sublimation on polytek with black techmesh inserts.

Paired with 18124\_06 in black campus stretchtek.





**A. 11455A01**

### Influential Competition Shirt

Competitive shirt in midnight, flannel grey, grey, and white sublimated on polytek.

Paired with WQ24\_36 in navy campus stretchtek.



**B. 11465A01**

### Daring Competition Shirt

Competitive shirt in white, red, and navy sublimated on polytek with red, navy, and white sublimated on campus performance mesh.

Paired with SB042\_A01 custom sublimated on red campus stretchtek.

**c. 11445A01**  
**Withstanding Competition Shirt**

Competitive shirt in midnight and royal sublimated on polytek.

Paired with 1812M\_30 in royal campus stretchtek.



**d. 11435A01**  
**Bold Competition Shirt**

Competitive shirt in flannel grey, carbon, grey, and aluminum sublimated on polytek.

Paired with 1812M\_06 in black campus stretchtek.



**e. 11035A01**  
**Slasher Competition Shirt**

Competitive shirt in key lime, white, and black sublimated on polytek with black techmesh on back.

Paired with 1812M\_06 in black campus stretchtek.



**f. 11485A01**  
**Adaptable Competition Shirt**

Competitive shirt in midnight and yellow sublimated on polytek.

Paired with 53049\_A01 custom sublimation on polytek, with navy campus stretchtek.



# Men's *Special Order* Sublimation

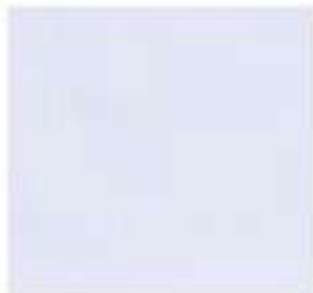
Customize your team's pre-game style with our extraordinary warm-ups, shirts, and bottoms. With engineered sublimation, simply pick your print, colors, and logo to create apparel tailored exclusively for your team.

See pgs. 137-139 for all options.

## Engineered Sublimation



**STEP 1:**  
PICK A STYLE  
Shirt | Shorts | Pants | Warm-Up



**STEP 2:**  
CHOOSE A FABRIC



**STEP 3:**  
CHOOSE A PRINT AND COLOR



**STEP 4:**  
ADD A TEAM NAME OR LOGO

36E/36W Minimum: 12 piece on initial order

Sample Deposit Required and is non-refundable

\$97 per warm-up jacket, \$60 per warm-up pant,

\$150 per warm-up set (jacket and pants), \$12 per blanket

in lieu of sample





## Feeling Creative? Try Custom.

Bring your vision to life with our custom design capabilities, turning your men's apparel dreams into a reality.

# Men's *Special Order* Warm-Ups

Complete your competition look for coaches and athletes with warm-up jackets and bottoms in your team colors.



**A. 8044A01**  
Quarter Zip Men's Jacket

Warm-up jacket in white drytech, maroon drytech, and white campus performance mesh.

**OPTIONS BROWN:** Team name in maroon embroidery on right chest.



**B. 8044A01**

### Quarter Zip Men's Jacket

Warm-up jacket in navy drytech, neon green drytech, and navy campus performance mesh.

**OPTIONS SHOWN:** Team name in neon green drytech bridge laser.

# Men's *Stock* Competitive Apparel

CK offers a full line of shirts, shorts, and pants that are ready to ship year-round. All styles are available as shown, or with optional embellishment additions.



**a. 1975M**  
Basic Competition Shirt

Competitive shirt in campus stretchtek and performance mesh with gusset leg cut.

Paired with 1872M\_016 in black campus stretchtek.



**a. 1899M**  
Red Champion Competition Shirt

Sublimated competitive shirt on polytek with black techmesh and boycut leg.

Paired with 1872M\_052 in red campus stretchtek.



**c. 1903M**  
Forceful Competition Shirt

Sublimated competitive shirt on polytek and campus performance mesh.

Paired with 1871M\_106 in steel campus stretchtek.

**a. 1902M**  
Fearless Competition Shirt

Sublimated competitive shirt on polytek.

Paired with 1872M\_052 in red campus stretchtek.



**A. 1897M**  
**Ringin' Freedom Competition Shirt**

Sublimated competitive shirt on polytek with boycott leg.

Paired with 813M\_812 in red campus stretchek.



**B. 1893M**  
**Loyalist Competition Shirt**

Sublimated competitive shirt on polytek with boycott leg.

Paired with 812M\_816 in navy campus stretchek.



**C. 1901M**  
**Evolving Competition Shirt**

Sublimated competitive shirt on polytek with boycott leg.

Paired with 812M\_816 in navy campus stretchek.



**D. 1900M**  
**Darkness Competition Shirt**

Sublimated competitive shirt on polytek with navy performance mesh and boycott leg.

Paired with 812M\_806 in steel campus stretchek.

€ 1898M

### Lightning Strikes Competition Shirt

Sublimated competitive shirt on polytek with navy campus performance mesh, navy campus stretchtek, and boycut leg.

Paired with 1812M\_18 in navy campus stretchtek.



€ 1894M

### Gray Champion Competition Shirt

Sublimated competitive shirt on polytek with boycut leg.

Paired with 1812M\_V06 in steel campus stretchtek.



€ 1904M

### Unyielding Competition Shirt

Sublimated competitive shirt on polytek.

Paired with 1812M\_06 in black campus stretchtek.



€ 1700M

### Basic Compression Competition Shirt

Black drytech compression shirt featuring flat lock seams for comfort.

Paired with 1812M\_V06 in steel campus stretchtek.



# Men's *Stock* Warm-Ups

Select from a variety of warm-up jackets and bottoms to outfit your team. Whether purchased as shown, or with additional embellishment, GK can produce stock warm-ups with quick turnaround times for your team.



## A. WUJ02G Unisex Jacket

Warm-up jacket with hand pockets and elastic at bottom of waistband and cuff.

Style coordinates with WUP01C.

**OPTIONS SHOWN:** Team logo in black and white embroidery on right chest.

152 Red	110 Maroon
014 Black	116 Navy
32C Dark Green	180 Royal

## B. WUJ03G Unisex Colorblock Jacket

Colorblock warm-up jacket with hand pockets and two stripes on lower sleeves.

Style coordinates with WUP01C.

**OPTIONS SHOWN:** Team logo in red embroidery on right chest.

W11 Red & White	Y05 Maroon & White
245 Black & White	V02 Navy & White
V02 Dark Green & White	W03 Royal & White



c. 1786116  
Modern Drytech Warm-Up Jacket

Relaxed fit men's warm-up jacket in navy drytech.

Style coordinates with WUP05.

**OPTIONS SHOWN:** Team name in white and grey embroidery on front, and team name in white and graphite drytech bridge laser on back.



d. W3M001016  
Varsity Men's Jacket

Warm-up jacket in black with full zipper.

Style coordinates with WPM01.

**OPTIONS SHOWN:** Team name in white and columbia blue drytech bridge laser.





**A. WU01G**  
Unisex Jogger Pant

Polyester/spandex unisex joggers with elastic and drawcord at waistband, two hand pockets, and two zippers at bottom leg opening.

Style coordinates with WU03C and WU02C.

- |  |  |
|--|--|
|  182 Red        |  198 Maroon |
|  016 Black      |  196 Navy   |
|  324 Dark Green |  180 Royal  |

**B. WPM00106**  
Varsity Jogger Pant

Warm-up pant in black with drawstring.

Style coordinates with W34001.



**C. 1787W71**  
Modern Drytech Warm-Up Pant

Relaxed fit men's warm-up pants in true navy drytech.

d. 1812M  
Campus Stretchtek Short

Campus stretchtek shorts with elastic drawstring waist and upper thigh hemline.



E.



e. 1811M  
Campus Stretchtek Long Short

Campus stretchtek shorts with elastic drawstring waist and mid-thigh hemline.



G.



f. 1830M  
Polyester/Spandex Training Short

Polyester/Spandex training shorts with elastic drawstring waist and lower thigh hemline.



g. 1813M  
Campus Stretchtek Pant

Campus stretchtek pants with comfortable, yet secure, waistband and stirrups.



# Accessories

Complete your team's look with our full line of backpacks,  
chairs, and more!



**A. L116-4**  
**Gymnastics Team Backpack**

Lightweight and durable, made with 100% nylon and exclusive texture shell. Features include mesh-lining, 4 zippered areas with customized space, and 180 degree zipper on top for easy access. The secure padded interior compartment protects your laptop or tablet. Side compression straps secure your water bottle, while reflective panels offer visibility at night. Dimensions of the backpack are: 12" wide x 18" tall x 7" deep. Customize with available embellishments.

● 016 Black	● 112 Silver
● 180 White	● 175 Turquoise
● 182 Red	● 188 Royal
● 010 Navy	● 116 Navy
● 488 Lime Green	● 089 Equipment
● 088 Kelly Green	



**B. B2300**  
**Sublimated Backpack**

Customizable sublimated backpack with 600 Denier Polyester fabric. Features 3 compartments, 2 side pockets, and padded shoulder straps. The secure internal laptop sleeve provides protection for your device. Dimensions of the backpack are: 12" wide x 18.25" tall x 5" deep.

**OPTIONS SHOWN:** Team name sublimated on front and top. Athlete name sublimated on strap.





**A. GK29**  
Classic Hologram Scrunchie

See [gkelite.com](http://gkelite.com) for additional colors to choose from.



**B. GK26**  
Classic Mystique Scrunchie

See [gkelite.com](http://gkelite.com) for additional colors to choose from.



**C. 1478**  
High Performance Seamless Brief

Seamless, smooth, 4-way stretch brief with wide waistband.

**SIZE:** X-Small (XS), Small (S), Medium (M), Large (L), X-Large (XL)

● 000 Black ● 007 Nude ● 004 Green



**D. GK108**  
Rubber Sole Gymnastics Slipper

White polyester Carite brand gymnastics shoe with rubber sole and elastic across the instep. Rubber sole is the perfect trampoline shoe to help prevent slipping while on the trampoline.

**CHILD SIZE:** C5-C11 | **ADULT SIZE:** A6-A14



**E. GK105**  
Men's Competitive Socks

2-Pack of Performance Socks featuring moisture wicking fabric and arch support technology for ultimate comfort. Coordinates with men's pants.

**SIZE:** Child and Adult

● 000 Black ● 100 Red  
● 004 Green ● 108 Navy  
● 100 White ● 100 Royal



**F. 1406**  
Mid-Waist Cotton Spandex Brief

Mid-waist cotton/spandex brief with crotch liner.

**SIZE:** 000-006

● 007 Nude ● 000 Black



**c. 1482**  
Appears Backless Bra

Nylon/spandex bra. Wide, clear, and removable back strap for "backless" look. Includes adjustable and removable clear plastic straps.

**SIZE:** C - AXL

**897** Nude



**h. 1486**  
High Performance Seamless Support Bra

Seamless, smooth, double lined 4-way stretch with added support for a fuller bust. Wider band and increased coverage than style 1483.

**SIZE:** AL fits most BC cup, AXL fits most CD cup

**897** Nude **894** Brown



**l. 1483**  
High Performance Seamless Bra

Seamless, smooth, double lined 4-way stretch bra with adjustable and removable clear plastic straps.

**SIZE:** CDS - AXL

**894** Brown **897** Nude



**j. 1466**  
High Performance Seamless Bra

Cotton/spandex bra with low scoop and double-lined front.

**SIZE:** S, fits most BC cup, AXL fits most CD cup

**894** Black **897** Nude



**k. 1487**  
High Performance Seamless Liner

Seamless, smooth, double lined, 4-way stretch full body liner with shelf bra and adjustable, removable clear plastic straps.

**SIZE:** X-Small (CDS-CS), Small (CM-CL), Medium (AXS-AS), Large (AM-AL), X-Large (AXL)

**894** Brown **897** Nude

**Replacements**

**N 415**  
Pair of replacement clear plastic shoulder straps for Appears Backless Bra: 1482.  
**SIZE:** 16" (CS - CL), 20" (AXS-AXL)

**N 416**  
Replacement clear plastic back strap for Appears Backless Bra: 1482.  
**SIZE:** 7" (CM), 8" (CL), 9" (AXS), 10" (AS), 11" (AM), 12" (AL), 13" (AXL)

**N 443**  
Pair of replacement clear plastic shoulder straps for High Performance Seamless Bra: 1483.  
**SIZE:** 12"



**A. GK106**  
Ladies' U.S. Glove Buckle  
Gymnastics Grips

High-quality leather double buckle wristband with two finger holes and small wrap dowel for use on the uneven bars. See page 141 for size chart.

**B. GK107**  
Ladies' U.S. Glove Velcro  
Gymnastics Grips

High-quality, leather grips with velcro wristband, finger holes and small leather wrap dowel for use on the uneven bars and velcro closures for a secure fit. See page 141 for size chart.



**C. GK32**  
Hand Grips

Soft suede grips with closures. See page 141 for size chart.

**SIZE:** XGS-XS-GH-MD-LG

- |            |                 |
|------------|-----------------|
| 808 Black  | 169 Royal       |
| 188 White  | 881 Neon Lime   |
| 182 Red    | 880 Neon Pink   |
| 148 Purple | 882 Neon Orange |

**D. GK91**  
Mystique Grip Bag

Mystique grip bag with jeweled GK logo.

- |                       |                |
|-----------------------|----------------|
| F21 Berry             | 881 Rich Royal |
| 019 Imperial Purple   |                |
| F22 Black             |                |
| F87 Electric Paradise |                |



**e. GK49**  
**3 1/2" Neoprene Wristbands**

These neoprene wristbands protect your wrists when using grips.

018 Black  148 Royal

**f. GK88**  
**5" Terry Wristbands**

Stretch terry wristbands protect your wrists when using grips.

188 White

**g. GK40**  
**3" Terry Wristbands**

Stretch terry wristbands protect your wrists when using grips.

018 Black  188 White  148 Purple



**h. GK103**  
**Tiger Paw Wrist Supports**

Protects and supports wrists to prevent injuries. Stocked as shown.

**SIZE:** X-Small (Under 99 lbs.), Small (99-125 lbs.), Medium (125-150 lbs.), Large (150-200 lbs.)

697 Nude



**i. GK50**  
**Gym Chalk**

Magnesium Carbonate stocked by the pound in eight 2-ounce blocks.



# Embellishments & Fabrics

Discover your favorite styles, then let the fun begin! GK offers the industry's most extensive selection of fabrics and embellishments, ensuring you get the colors and options you want to create every extraordinary look.



## Crystals Embellishments

GK offers a large assortment of crystal embellishment options. With two crystal options - Premium and Standard - your apparel designs can sparkle and shine all while fitting within your budget!

### Premium Swarovski® Crystals



The GK Premium Swarovski® Crystal collection features authentic crystals giving your apparel the best and brightest sparkle on the mat. With an intricate and multi-layered cut, which creates a diamond-like sparkle, Premium Swarovski® crystals have 4x the facets of a Standard crystal with 2.5x the brilliance. Premium Swarovski® crystals are incredibly durable featuring 10x more hotfix glue than competitor crystals to keep your stones in place. Premium Swarovski® crystals are scratch, bubble, and chip free.



Since 1994, Swarovski® crystals have adorned GK leotards and apparel and offer the best brilliance and sparkle under the competition lights. Outshine the competition with Swarovski® crystals.

### Standard Crystals



The GK Standard Crystal collection offers high-quality crystals at an affordable price. Featuring crystals made in Austria, these perfectly geometric crystals are consistent in color and size. Standard crystals are also resistant to environmental influences, feature strong hotfix glue, and have a high wash resistance which keeps your apparel intact and beautiful all season long.

Premium and Standard Crystals are offered in the following sizes.

(Shown Actual Size)

● size 2mm ● size 2.8mm ● size 4mm ● size 4.8mm

	PREMIUM	STANDARD
COLOR OPTIONS	10	17
VIBRANT COLORS	6	Not Available
SHAPED OPTIONS	3	Not Available

## Premium Swarovski® Crystals - Specialty Options

The GK Premium Crystal collection exclusively features Shaped Swarovski® and Vibrant Swarovski® crystals.

### Shaped Swarovski® Crystals

Offering 5 crystal shape options.



### Vibrant Swarovski® Crystals

Offering 6 vibrant color options.

●●● Vibrant Orange



●●● Vibrant Yellow



●●● Vibrant Pink



●●● Vibrant Green



●●● Vibrant Blue



●●● Vibrant Magenta



## Premium Swarovski® Crystal Collection - Color Options

Offering 18 crystal color options.



## Standard Crystal Collection - Color Options

Offering 17 crystal color options.

## | Clear Standard



## | Brilliance Standard



## | Gold Brilliance Standard



## | Fuchsia Standard



## | Ruby Standard



## | Mango Standard



## | Citrine Standard



## | Kiva Standard



## | Emerald Standard



## | Sky Blue Standard



## | Electric Blue Standard



## | Turquoise Shimmer Standard



## | Midnight Standard



## | Metallic Silver Standard



## | Metallic Gold Standard



## | Black Standard



## | Purple Standard



# Stock Embellishment Library

Stock embellishment options available in spangle™. Standard crystals, and Nailheads. Not available on velvet.

Available Fonts (14): Aztec, Aachen Bird, Lubain Graph, Bass Bold, Bookman Old Style Bold, Bookman Italic, Swing Bold, Brush Script, Brody Impact, Poplar STD, Aachen Script, Freshman, Helvetica Bold.



V NECK SCATTER

**A FRONT**

9SP05275, 9CS01492,  
9NH00002

AVAILABLE ON: 3772



SCOOP NECK SCATTER

**B FRONT**

9SP05276, 9CS01493,  
9NH00003

AVAILABLE ON: 3407, 3456, 2091,  
2012, 3772



GYMNAST BURST

**C FRONT OR BACK**

9SP05277, 9CS01494,  
9NH00004

AVAILABLE ON: 3407, 3456, 2091,  
2012, 3772



GYMNAST HANDSTAND

**D FRONT OR BACK**

9SP05278, 9CS01495,  
9NH00005

AVAILABLE ON: 3407, 3456, 2091,  
2012, 3772



AZTEC

**E FRONT**

9SP05279, 9CS01496,  
9NH00006

AVAILABLE ON: 3407, 3456, 2091,  
2012, 3772



CHANDELIER

**F FRONT**

9SP05280, 9CS01497,  
9NH00007

AVAILABLE ON: 3407, 3456, 2091,  
2012, 3772



DIAMONDRACK

**G BACK**

9SP05281, 9CS01498,  
9NH00008

AVAILABLE ON: 3407, 3456, 2091,  
2012, 3772



BUTTERFLY

**H FRONT**

9SP05282, 9CS01499,  
9NH00009

AVAILABLE ON: 3407, 3456, 2091,  
2012, 3772



BUTTERFLY

**I BACK**

9SP05283, 9CS01500,  
9NH00010

AVAILABLE ON: 3407, 3456, 2091,  
2012, 3772



ARROWHEAD

**J FRONT**

9SP05284, 9CS01501,  
9NH00011

AVAILABLE ON: 3407, 3456, 2091,  
2012, 3772



ARROWHEAD

**K BACK**

9SP05285, 9CS01502,  
9NH00012

AVAILABLE ON: 3407, 3456, 2091,  
2012, 3772



EXUBERANCE

**L FRONT**

9SP05286, 9CS01503,  
9NH00013

AVAILABLE ON: 3407, 3456, 2091,  
2012, 3772



EXUBERANCE

**M BACK**

9SP05287, 9CS01504,  
9NH00014

AVAILABLE ON: 3407, 3456, 2091,  
2012, 3772



STARPOP

**N FRONT**

9SP05288, 9CS01505,  
9NH00015

AVAILABLE ON: 3407, 3456, 2091,  
2012, 3772



DIAMONISTA

**O FRONT**

9SP05289, 9CS01506,  
9NH00016

AVAILABLE ON: 3407, 3456, 2091,  
2012, 3772



LOOP

**P FRONT**

9SP05290, 9CS01507,  
9NH00017

AVAILABLE ON: 3407, 3456, 2091,  
2012, 3772



STARBURST

**Q FRONT**

9SP05291, 9CS01508,  
9NH00018

AVAILABLE ON: 3407, 3456, 2091,  
2012, 3772



RAINFALL

**R FRONT**

9SP05292, 9CS01509,  
9NH00019

AVAILABLE ON: 3407, 3456, 2091,  
2012, 3772



FEATHER

**S FRONT**

9SP05293, 9CS01510,  
9NH00020

AVAILABLE ON: 3407, 3456, 2091,  
2012, 3772



FIREWORK

**T FRONT**

9SP05294, 9CS01511,  
9NH00021

AVAILABLE ON: 3407, 3456, 2091,  
2012, 3772



FIREWORK SHOWER

**U FRONT**

9SP05295, 9CS01512,  
9NH00022

AVAILABLE ON: 3407, 3456, 2091,  
2012, 3772



ILLUSION

**V FRONT**

9SP05296, 9CS01513,  
9NH00023

AVAILABLE ON: 3407, 3456, 2091,  
2012, 3772



ARCH

**W FRONT**

95P05297, 9C501514,  
9N100024

AVAILABLE ON: 3457, 3456, 2017,  
2012, 3772



OVERLAP

**X FRONT**

95P05298, 9C501515,  
9N100025

AVAILABLE ON: 3457, 3456, 2017,  
2012, 3772



OVERLAP

**Y BACK**

95P05299, 9C501516,  
9N100026

AVAILABLE ON: 3457, 3456, 2017,  
2012, 3772



RIBBON

**Z ANY STOCK LOCATION**

95P05300, 9C501517,  
9N100027

AVAILABLE ON: 3457, 3456, 2017,  
2012, 3772



LEADING GYMNAST

**1 FRONT OR BACK**

95P05301, 9C501518,  
9N100028

AVAILABLE ON: 3457, 3456, 2017,  
2012, 3772



GYMNAST

**2 FRONT OR BACK**

95P05302, 9C501519,  
9N100029

AVAILABLE ON: 3457, 3456, 2017,  
2012, 3772

## Team Brand Inserts

Insert team name in the preset designs.

Available on: Most Stock basics, warm-ups, and basic special order styles. Reference website for exact styles using our UDesign feature.

Colors: Premium and Standard Crystals, Flatheads, and Springs™

Available Fonts (14): Nuthack, Aachen Bold, Lubalin Graph Book Bold, Bookman Old Style Bold, Bookman Gals, Swing Bold, Brush Script, Body, Impact, Poplar STD, AdMan Sans, Freshman, Helvetica Bold



TEAM BRAND - BURST



TEAM BRAND -  
NEGATIVE SPACE



TEAM BRAND - SCATTER



TEAM BRAND - STAR



TEAM BRAND - SWIRL



TEAM BRAND -  
CURVY BURST

# Custom Embellishment Options

## Embroidery



Example in white

### EMBROIDERY PRICING & FEES:

1" x 1"	\$10.00
2" x 2"	\$15.00
3" x 3"	\$15.00
4" x 4"	\$20.00



## Imprinting

NO SET-UP FEES!



1 COLOR  
IMPRINTING:  
PRICE: \$18.00.

PLEASE SEE PAGE 120 FOR AVAILABLE FONTS.  
\*Stock imprinted logo samples are available upon request. Custom imprinted logo samples are not available.



## Applique- Embroidery

NO SET-UP FEES!

EMBROIDERY PRICING & FEES:  
ONE LAYER \$20.00  
TWO LAYER \$25.00  
THREE LAYER \$30.00



Example of a one-layer in berry nylon/spandex over black DryTech.



Example of a two-layer in white mystique and berry mystique over black DryTech.



Example of a three-layer in berry mystique, white mystique and lime mystique over black DryTech.

AVAILABLE IN ALL COLORS OF:

Nylon/Spandex, Nylon/Spandex with Foil, DryTech, Hologram.

SEE ABOVE FOR COLORS.



## Spanglez™ NO SET-UP FEES!



ANY SPANGLEZ™,  
ANY SIZE:

PER LOCATION \$15.00

SPANGLEZ™ CANNOT BE APPLIED  
TO NEVEL, NEVEL HIGH POIL,  
MOVELY HIGH OR MOVELY H&L.

## Red Hologram



## Gold Hologram



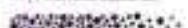
## Turquoise Hologram



## Royal Hologram



## Pink Hologram



## Red



## Gold



## Seaglass



## Purple



## Pink



## Orange



## Kelly Green Hologram



## Turquoise



## Berry



## Black



## Orange Hologram



## Kelly Green



## Royal



## Berry Hologram



## White



## Silver



## Silver Hologram



## Nailheads

## Metallic Silver Nailhead



## Metallic Gold Nailhead



Stock Fonts for  
Imprinting &  
Appliqué Embroidery

CHOOSE FROM 15 FONTS



## Team Names NO DESIGN OR SET-UP FEES!

FONT OPTIONS:

Muller  
Aachen Bold  
Helvetica Bold  
Impact  
Brush Script

## ADD TEAM NAMES IN EITHER CRYSTALS OR SPANGLEZ™

SIZE GUARANTEED:

Child Sizes:  
up to 8" wide x 2 1/2" high  
Adult Sizes:  
up to 8" wide x 3" high

SEWER FRONT COLLAR,  
BACK AND SLEEVES.



SINGLE ROW UP TO 8"W X 3"H  
(MAX 15 LETTERS)

PREMIUM CRYSTAL PRICING: \$45.00

STANDARD CRYSTAL/BACKLAD PRICING: \$30.00

SPANGLEZ™ PRICING: \$15.00



DOUBLE ROW UP TO 8"W X 3"H  
(MAX 8 LETTERS)

PREMIUM CRYSTAL PRICING: \$70.00

STANDARD CRYSTAL/BACKLAD PRICING: \$55.00

SPANGLEZ™ PRICING: \$15.00



TRIPLE ROW UP TO 8"W X 3"H  
(MAX 6 LETTERS)

PREMIUM CRYSTAL PRICING: \$40.00

STANDARD CRYSTAL/BACKLAD PRICING: \$25.00

SPANGLEZ™ PRICING: \$15.00

### DRYTECH 92% Micropoly/8% Lycra®

LONG WEARING, DURABLE FABRIC Available in binding and piping.



100 White 101 Graphite 102 Carbon 103 Maroon



104 Red Hot 105 Neon Green 106 Kelly Green 107 Evergreen



108 Turquoise 109 Columbia Blue 110 Royal 111 True Navy



112 Sapphire 113 Navy 114 Purple 115 Berry



116 Black

### NYLON/SPANDEX 80% Nylon/20% Spandex

LONG WEARING, DURABLE FABRIC Available in binding and piping.



117 White 118 Burgundy 119 Red



120 Black

### CAMPUS STRETCHTEK™ 82% Polyester/18% Spandex

LONG WEARING, DURABLE FABRIC



121 White 122 Steel 123 Black 124 Royal 125 Navy



126 Red 127 Orange

### CAMPUS PERFORMANCE MESH

73% Nylon/27% Spandex

LONG WEARING, DURABLE FABRIC



128 White 129 Royal 130 Navy 131 Red

### MYSTIQUE Nylon/Spandex With Foil, 80% Nylon/20% Spandex or 80% Polyester/20% Spandex

DURABLE FABRIC Available in binding and piping.



132 White Mystique 133 Red Mystique 134 Scarlet Pearl Mystique 135 Sunshine Mystique 136 Fluorescent Orange Mystique 137 Yellow Mystique 138 Champagne Mystique



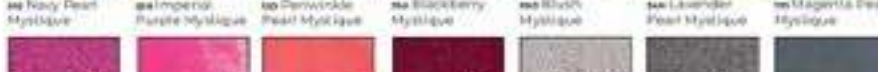
139 Gold Mystique 140 Fluorescent Yellow Mystique 141 Fluorescent Lime Mystique 142 Kelly Green Mystique 143 Evergreen Mystique 144 Cosmic Turquoise Mystique 145 Hunter Green Mystique



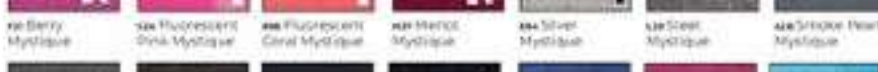
146 Ecoform Pearl Mystique 147 Dark Teal Mystique 148 Rim Rope Mystique 149 Ocean Mystique 150 Ocean Pearl Mystique 151 Cosmic Blue Mystique 152 Navy Mystique



153 Navy Pearl Mystique 154 Imperial Purple Mystique 155 Periwinkle Pearl Mystique 156 Blackberry Mystique 157 Black Mystique 158 Lavender Pearl Mystique 159 Magenta Pearl Mystique



160 Berry Mystique 161 Fluorescent Pink Mystique 162 Fluorescent Coral Mystique 163 Heron Mystique 164 Silver Mystique 165 Steel Mystique 166 Smoke Pearl Mystique



167 Gunmetal Mystique 168 Charcoal Mystique 169 Black Matte Mystique 170 Black Mystique 171 Eggplant Pearl Mystique 172 Cherry Blossom Mystique 173 Aquamarine Mystique



174 Dyer Pearl Mystique 175 Slate Mystique 176 Maroon Mystique

▲ Fabrics that have a high level of color bleed when combined with white or light colors.

■ Fabrics contain polyester.

### SHADOW-PROOF LINER

90% Polyester/10% Spandex

■ Best options with Spandex.



177 Taupe 178 Brown



179 Dark Brown 180 White



181 Black

### NOVELTY RIB

72% Nylon/28% Spandex

\*Please Note: Spandex™ and imprinting cannot be applied to novelty rib.



182 Black Rib 183 Grey Rib 184 Navy Rib 185 Red Rib



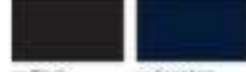
186 White Rib

▲ 80% Nylon/20% Spandex  
▲ 70% Polyester/30% Spandex

### VELVET\* 86% Polyester/14% Spandex

Available in binding (not piping).

\*Please Note: Spandex™ and imprinting cannot be applied to velvet.



187 Black 188 Sapphire

**SOFTLUX 82% Polyester/18% Spandex**  
Available in binding and piping.



**MESH 80% Nylon/20% Spandex** **FRAGILE FABRIC**  
Not available in binding or piping. \*Please Note: Spanglex™ cannot be applied to mesh.



**NOVELTY MESH 58% Nylon/42% Spandex**

**FRAGILE FABRIC**  
Not available for binding or piping.  
Please Note: Spanglex™ cannot be applied to novelty mesh.  
\* 80% Nylon/20% Spandex.



**NOVELTY 80% Nylon/20% Spandex**



**HOLOGRAM 80% Nylon/20% Spandex or 80% Polyester/20% Spandex**

**FRAGILE FABRIC**  
\* 80% Polyester/20% Spandex



**MESH FOIL 80% Polyester/20% Spandex** **FRAGILE FABRIC**

Please Note: Spanglex™ cannot be applied to mesh.



**PRIMATEX 80% Nylon/20% Spandex**

Available in binding and piping.



**TECHMESH 80% Nylon/20% Spandex**

**LOW WEAR/NO SPARKLE FABRIC** Available in binding and piping.



**Discontinued Colors:** (Available for reorders only, while supplies last)

**HOLOGRAM**

**23A** Imperial Purple Opalescence  
**W64** Turquoise Opalescence

**MESH FOIL**

**090** Caribbean Fairy Mesh  
**88E** Seaworm Opal Mesh  
**86E** Viola Opal Mesh

**NYLON/SPANDEX**

**70A** Cobalt  
**103** Pewter  
**148** Purple  
**160** Royal

**MYSTIQUE**

**300** Seaworm Pearl Mystique  
**438** Rose Pearl Mystique

## Sublimation Fabrics

GK is committed to providing the very best sublimation processes in the industry. We work with our fabric vendors and sublimation ink suppliers to continually improve the outcome of our sublimated garments. These improvements may affect the sublimated colors on reorders, as we continue to advance our sublimation techniques. Due to the nature of the sublimation process, GK will match the color on reorders to the best of our ability, but cannot guarantee a perfect match. Please be mindful that wear and washing throughout the season will affect the color saturation in your garment. Reorders will be processed based off the artwork and colors used in the original production order, and may not match the garments already in use.

### *HoloTek*

Women's leotards and women's workout shorts

### *Sulfuse*

Women's leotards, tanks, and men's compression shirts

### *PrimateX*

Women's tank leotards

### *Mesh & Foil Mesh*

Women's leotards

### *Optic White*

Men's compression shirts, warm-ups, women's workout shorts, and women's capris

## Sublimation Colors



# Primatex Sublimation

Primatex Sublimation is available in 19 base colors.

Select your style and print, then choose a base layer and coordinating print color to complete your design.

<p><b>ON 032 BERRY PRIMATEX/SOFTLUX</b></p> <ul style="list-style-type: none"> <li> YW   Black</li> <li> WW   Ultra Violet</li> <li> WW   Hot Pink</li> <li> WW   Purple</li> <li> WW   Electric Blue</li> </ul>	<p><b>ON 152 RED PRIMATEX/SOFTLUX</b></p> <ul style="list-style-type: none"> <li> WW   Black</li> <li> WW   Candy Apple</li> </ul>	<p><b>ON 134 PERIWINKLE PRIMATEX/SOFTLUX</b></p> <ul style="list-style-type: none"> <li> WW   Black</li> <li> WW   Flannel Gray</li> <li> WW   Spearmint</li> <li> WW   Rainforest</li> <li> WW   Teal</li> <li> WW   Electric Blue</li> <li> WW   Periwinkle</li> <li> WW   Columbia Blue</li> <li> WW   Navy</li> <li> WW   Purple</li> <li> WW   Wildberry</li> <li> WW   Candy Apple</li> </ul>	<p><b>ON 160 ROYAL PRIMATEX/SOFTLUX</b></p> <ul style="list-style-type: none"> <li> WW   Black</li> <li> WW   Electric Blue</li> <li> WW   Purple</li> </ul> <p><b>ON 98E AQUA PRIMATEX</b></p> <ul style="list-style-type: none"> <li> WW   Black</li> <li> WW   Flannel Gray</li> <li> WW   Key Lime</li> <li> WW   Spearmint</li> <li> WW   Sunforest</li> <li> WW   Teal</li> <li> WW   Aqua</li> <li> WW   Bright Turquoise</li> <li> WW   Electric Blue</li> <li> WW   Navy</li> <li> WW   Purple</li> <li> WW   Wildberry</li> </ul>	<p><b>ON 076 GREY PRIMATEX/SOFTLUX</b></p> <ul style="list-style-type: none"> <li> WW   Black</li> </ul> <p><b>ON 04H LIGHT GREY PRIMATEX</b></p> <ul style="list-style-type: none"> <li> WW   Black</li> <li> WW   Carbon</li> <li> WW   Flannel Gray</li> <li> WW   Rainforest</li> <li> WW   Bright Turquoise</li> <li> WW   Midnight</li> <li> WW   Navy</li> <li> WW   Royal</li> <li> WW   Periwinkle</li> <li> WW   Purple</li> <li> WW   Fuchsia</li> <li> WW   Cotton</li> <li> WW   Candy Apple</li> </ul>
<p><b>ON 190 SEAGLASS PRIMATEX</b></p> <ul style="list-style-type: none"> <li> WW   Black</li> <li> WW   Teal</li> <li> WW   Electric Blue</li> <li> WW   Navy</li> <li> WW   Purple</li> </ul>	<p><b>ON 98B FLORESCENT COBAL PRIMATEX</b></p> <ul style="list-style-type: none"> <li> WW   Black</li> <li> WW   Flannel Gray</li> <li> WW   Turquoise</li> <li> WW   Navy</li> <li> WW   Wildberry</li> <li> WW   Hot Pink</li> <li> WW   Peach</li> <li> WW   Eggplant</li> </ul>	<p><b>ON 824 MAGENTA PRIMATEX</b></p> <ul style="list-style-type: none"> <li> WW   Black</li> <li> WW   Electric Blue</li> <li> WW   Navy</li> <li> WW   Magenta</li> <li> WW   Wildberry</li> <li> WW   Pink</li> </ul>	<p><b>ON 095 LAVENDER PRIMATEX</b></p> <ul style="list-style-type: none"> <li> WW   Black</li> <li> WW   Flannel Gray</li> <li> WW   Key Lime</li> <li> WW   Sunforest</li> <li> WW   Bright Turquoise</li> <li> WW   Navy</li> <li> WW   Royal</li> <li> WW   Periwinkle</li> <li> WW   Purple</li> <li> WW   Wildberry</li> <li> WW   Hot Pink</li> <li> WW   Sangria</li> <li> WW   Peach</li> </ul>	<p><b>ON 028 BURGUNDY PRIMATEX</b></p> <ul style="list-style-type: none"> <li> WW   Black</li> </ul> <p><b>ON 290 FUCHSIA PRIMATEX</b></p> <ul style="list-style-type: none"> <li> WW   Black</li> </ul> <p><b>ON 40G FLORESCENT ORANGE PRIMATEX</b></p> <ul style="list-style-type: none"> <li> WW   Black</li> <li> WW   Navy</li> <li> WW   Tangerine</li> </ul>
<p><b>ON 58G FLORESCENT YELLOW PRIMATEX</b></p> <ul style="list-style-type: none"> <li> WW   Black</li> <li> WW   Rainforest</li> <li> WW   Navy</li> <li> WW   Strawberry</li> <li> WW   Tangerine</li> </ul>	<p><b>ON 175 TURQUOISE PRIMATEX</b></p> <ul style="list-style-type: none"> <li> WW   Black</li> <li> WW   Navy</li> <li> WW   Electric Blue</li> <li> WW   Purple</li> </ul>	<p><b>ON 29G FLORESCENT LIME PRIMATEX</b></p> <ul style="list-style-type: none"> <li> WW   Black</li> <li> WW   Spearmint</li> <li> WW   Teal</li> <li> WW   Navy</li> </ul>		

# Engineered Sublimation Prints

						
<p><b>DOTTED DIMENSIONS</b> up to 3 color artwork</p> <ul style="list-style-type: none"> <li>■ Red</li> <li>■ Midnight</li> <li>■ White</li> </ul>	<p><b>BRUSHED BEAUTY</b> up to 3 color artwork</p> <ul style="list-style-type: none"> <li>■ Red</li> <li>■ Black</li> </ul>	<p><b>ATHLETIC APPEAL</b> up to 3 color artwork</p> <ul style="list-style-type: none"> <li>■ Grey</li> <li>■ Black</li> <li>■ White</li> </ul>	<p><b>SOFT WATERCOLOR</b> up to 3 color artwork</p> <ul style="list-style-type: none"> <li>■ Chalk</li> <li>■ White</li> <li>■ Ice Blue</li> </ul>	<p><b>VERTICAL DRIP</b> up to 4 color artwork</p> <ul style="list-style-type: none"> <li>■ Apricot</li> <li>■ Mauve</li> <li>■ Royal</li> <li>■ Navy</li> </ul>	<p><b>ILLUSIONS</b> up to 3 color artwork</p> <ul style="list-style-type: none"> <li>■ Penicillin</li> <li>■ Royal</li> <li>■ Gold</li> </ul>	<p><b>TRANSITIONS</b> up to 3 color artwork</p> <ul style="list-style-type: none"> <li>■ Midnight</li> <li>■ Orange</li> </ul>
						
<p><b>CHEVRON DREAMS</b> up to 3 color artwork</p> <ul style="list-style-type: none"> <li>■ Crimson</li> <li>■ Flannel Gray</li> <li>■ White</li> </ul>	<p><b>WARPED</b> up to 3 color artwork</p> <ul style="list-style-type: none"> <li>■ Black</li> <li>■ Hot Pink</li> <li>■ Key Lime</li> </ul>	<p><b>CHIC FLORAL</b> up to 4 color artwork</p> <ul style="list-style-type: none"> <li>■ Cherry</li> <li>■ White</li> <li>■ Key Lime</li> <li>■ Pink</li> </ul>	<p><b>FLOWERED SCROLL</b> up to 3 color artwork</p> <ul style="list-style-type: none"> <li>■ Valencia</li> <li>■ Sangria</li> <li>■ Rose</li> </ul>	<p><b>STARBURST</b> up to 3 color artwork</p> <ul style="list-style-type: none"> <li>■ Electric Blue</li> <li>■ White</li> <li>■ Carmo</li> </ul>	<p><b>WHIMSY</b> up to 3 color artwork</p> <ul style="list-style-type: none"> <li>■ Navy</li> <li>■ Electric Blue</li> <li>■ Aquil</li> </ul>	<p><b>RHYTHMIC BALANCE</b> up to 2 color artwork</p> <ul style="list-style-type: none"> <li>■ Gray</li> <li>■ Fossil Electric Blue</li> </ul>
						
<p><b>PINPOINT</b> up to 3 color artwork</p> <ul style="list-style-type: none"> <li>■ Cherry</li> <li>■ Tangerine</li> <li>■ Carbon</li> </ul>	<p><b>PROPEL</b> up to 3 color artwork</p> <ul style="list-style-type: none"> <li>■ Neon Yellow</li> <li>■ Hot Pink</li> <li>■ Carbon (Tonal)</li> </ul>	<p><b>VERTICAL FADE</b> up to 3 color artwork</p> <ul style="list-style-type: none"> <li>■ Key Lime</li> <li>■ Bright Turquoise</li> <li>■ Royal</li> </ul>	<p><b>DIAGONAL FADE</b> up to 3 color artwork</p> <ul style="list-style-type: none"> <li>■ Rose</li> <li>■ Fuchsia</li> <li>■ Purple</li> </ul>	<p><b>LIMITLESS</b> up to 5 color artwork</p> <ul style="list-style-type: none"> <li>■ Key Lime</li> <li>■ Flannel Gray</li> <li>■ Teal</li> </ul>	<p><b>CONCENTRATION</b> up to 4 color artwork</p> <ul style="list-style-type: none"> <li>■ Navy</li> <li>■ White</li> <li>■ Electric Blue</li> <li>■ Flannel Gray</li> </ul>	<p><b>TEXTURED FADE</b> up to 2 color artwork</p> <ul style="list-style-type: none"> <li>■ Bright Turquoise</li> <li>■ Hot Pink</li> <li>■ Purple</li> </ul>

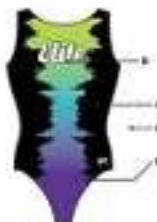
## Engineered Sublimation Prints (cont.)



### SPIN ART

up to 2 color artwork

- Tonal Cosmic
- Carbon



### RADIOACTIVE

up to 4 color artwork

- Purple
- Bright Turq
- Key Lime
- Black



### PAINT SPLATTER

up to 5 color artwork

- Hot Pink
- Carbon
- Black



### FEATHERED SPACE

up to 4 color artwork

- Hot Pink
- Neon Yellow
- Electric Blue
- Tonal Bright Turq



### REPETITION

up to 3 color artwork

- Tonal Electric Blue
- Tonal Neon Yellow
- Tonal Black



### RADIAL BURST

up to 2 color artwork

- Tonal Cherry
- Bright Turq



### PARADISE

up to 3 color artwork

- Navy
- Furiosa
- Peach



### ZOOM TECH

up to 4 color artwork

- Navy (Total)
- Yellow
- Key Lime
- Electric Blue (Tonal)



### RACEWAY

up to 3 color artwork

- Teal
- Carbon
- Midnight



### VIBRANT DAY

up to 3 color artwork

- Honeydew
- Strawberry
- Carbon



### CHAMELEON

up to 2 color artwork

- Purple
- Strawberry



### DARK MAJESTY

up to 2 color artwork

- Tangerine
- Blue Ribbon



### FADED BLUR

up to 3 color artwork

- Berry
- Electric Blue
- Midnight



### ELECTRIC WEB

up to 2 color artwork

- Bright Turquoise
- Hot Pink
- Royal



### URBAN TECH

up to 3 color artwork

- Gray
- Berry
- Neon Yellow
- Carbon

## SoftLux & Primatex Sublimation Prints

Print	Print	Print				
						
<b>WRAPPED WONDER</b> Base Fabric: Light Gray Primatex Sublimation Color: Navy	<b>STAR STUDDED</b> Base Fabric: Lavender Primatex Sublimation Color: Black	<b>PIXEL PERFECTION</b> Base Fabric: Burgundy Primatex Sublimation Color: Black	<b>MIGHTY</b> Base Fabric: Florescent Coral Primatex Sublimation Color: Eggplant	<b>WAVE RUNNER</b> Base Fabric: Florescent Yellow Primatex Sublimation Color: Black	<b>TROPICAL NOISE</b> Base Fabric: Florescent Lime Primatex Sublimation Color: Teal	<b>CHANDELIER</b> Base Fabric: Turquoise Primatex Sublimation Color: Navy
						
<b>GRACEFUL LACE</b> Base Fabric: Purple Primatex Sublimation Color: Black	<b>WISHFUL HUES</b> Base Fabric: Royal Primatex Sublimation Color: Sapphire	<b>POWERFUL</b> Base Fabric: Berry Primatex Sublimation Color: Black	<b>RACING STRIPE</b> Base Fabric: Meriwinkle Primatex Sublimation Color: Flannel Gray	<b>STAGGERED ART</b> Base Fabric: Aqua Primatex Sublimation Color: Key Lime	<b>VIBRANT GRAIN</b> Base Fabric: Berry Primatex Sublimation Color: Ultraviolet	<b>STORMY NIGHT</b> Base Fabric: Magenta Primatex Sublimation Color: Black
						
<b>OUTLASTING STRENGTH</b> Base Fabric: Light Gray Primatex Sublimation Color: Navy	<b>LACED PERFECTION</b> Base Fabric: Burgundy Primatex Sublimation Color: Black	<b>DYNAMIC</b> Base Fabric: Lavender Primatex Sublimation Color: Purple	<b>ELEGANCE</b> Base Fabric: Berry Primatex Sublimation Color: Teal			



# Sublimation Styles

## WOMEN'S ENGINEERED SUBLIMATION



SBE100



SBE101



SBE102



SBE103



SBE301



SBE200



SBE402



## WOMEN'S SOFTLUX & PRIMATEX SUBLIMATION



SBP100



SBP101



SBP102



SBP103

## CUSTOM SUBLIMATION



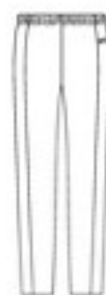
SBW100



SBW102



SBW304



SBW406



SBC304



SBC305

# Sublimation Styles:

## WOMEN'S CUSTOM SUBLIMATION



SBC100

SBC101

SBC102

SBC103

SBC105

SBC106

SBC107

SBC112



SBC116

SBC117



SBC200

SBC201



SBC202

SBC203



SBC204



SBC205

SBC206



SBC207

SBC208

SBC209



SBC210

SBC211



SBC212

SBC213



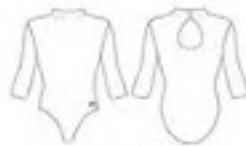
SBC214

Available in long & 3/4 sleeve options



SBC215

Available in long & 3/4 sleeve options



SBC216

Available in long & 3/4 sleeve options



SBC217

Available in long & 3/4 sleeve options



SBC218

Available in long & 3/4 sleeve options



SBC219

Available in long & 3/4 sleeve options

ACRO & TUMBLING ENGINEERED SUBLIMATION



QSLTU



QSSHU

ACRO & TUMBLING CUSTOM SUBLIMATION



SBC205



SBC611

MEN'S CUSTOM SUBLIMATION



SBG400



SBG401



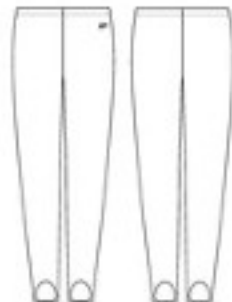
SBG408



SBG413



SBG409



SBG412



SBG410



SBG414



SBG411

## Women's Sizing Instructions

At GK, years of pattern development have taught us that the most accurate way to ensure proper fit is to rely on body measurements. An individual's perception of fit may vary greatly; however, the GK Fit is scientifically engineered to move with the athlete for optimal performance. Measuring athletes takes the guess work out of selecting their size. It is quick, easy, reliable, and helps to achieve a similar fit for all team members.

The fit and feel of a garment will vary significantly based on the fabric type and embellishments used on the garment. Heavy embellishments and appliques reduce the stretch so the sizing sample may not fit or feel like the garment ordered for the team. To continue to provide the "GK fit" we use our size charts when ordering garments.

The following size charts have been thoroughly evaluated to ensure that taking accurate athlete measurements will result in the correct size being ordered. To select the correct size, reference the appropriate GK size chart for the style being ordered to determine which size best corresponds to the athlete's measurements.

\* Long and Short torso options available for an additional cost.

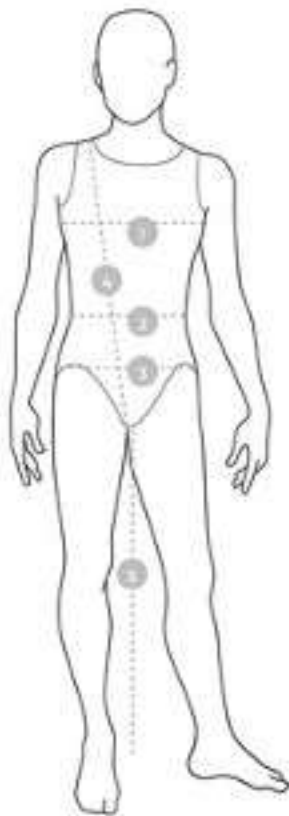
\*\* Select styles are offered in XXXL.

## Women's Size Charts

### How To Measure

When an athlete's measurement contains a partial inch, always round up to the next full inch. If an athlete's measurements fall across two sizes, order the larger size.

- 1. CHEST MEASUREMENT:** Measure the chest with arms at the side. Be sure to take the measurement at the fullest part of the chest.
- 2. WAIST MEASUREMENT:** Measure the waist at the natural waistline which is the narrowest part of the waist. If you're having trouble locating the natural waist, have the athlete bend to the side. The natural waist is where the body bends.
- 3. HIP MEASUREMENT:** Take the hip measurement at the fullest part of the buttocks with the athlete's feet together.
- 4. TORSO MEASUREMENT:** Take the torso measurement from the center of the shoulder, down the torso, through the legs, and back to the shoulder.
- 5. INSEAM MEASUREMENT:** Take the leg inseam measure the athlete without shoes by running the tape from the crotch to one inch above the floor.



RELAXED FIT WARM-UPS				
SIZE	CHEST	WAIST	HIP	LENGTH
CXS**	20-22	21-22	20-22	19
CXS	22-24	22-23	22-24	21
CS	24-26	23-24	24-26	23
CM	26-28	24-25	26-28	25
CL	28-31	25-26	28-30	28
AXS	31-34	27-29	30-32	30
AS	34-36	30-31	32-34	31
AM	36-38	32-33	34-36	32
AL	38-40	34-35	36-38	33
AXL	40-42	36-37	38-40	33
A2XL	42-44	38-39	40-42	33
A3XL	44-46	40-41	42-44	33
A4XL	46-48	42-43	44-46	33

FITTED WARM-UPS							
SIZE	CHEST	WAIST	HIP	LENGTH	LONG SLEEVE OPTION*	SHORT SLEEVE OPTION*	WELLS
CXS**	17-19	18-19	19-21	37-39	40-42	34-36	19
CXS	20-22	19-21	22-24	40-42	43-45	37-39	21
CS	23-25	21-22	25-27	43-45	46-48	40-42	23
CM	26-28	22-23	28-29	46-48	49-51	43-45	25
CL	29-31	23-24	30-31	49-51	52-54	46-48	28
AXS	32-34	24-25	31-33	52-54	55-56	49-51	30
AS	34-35	25-26	33-35	55-56	57-59	52-54	31
AM	35-36	26-27	35-37	57-59	60-62	55-56	32
AL	36-37	27-29	37-38	60-62	63-65	57-59	33
AXL	37-39	29-31	38-40	63-65	65-67	60-62	33
A2XL	39-41	31-33	40-42	65-67	67-69	63-65	33
A3XL	41-43	33-35	42-44	67-69	69-71	65-67	33
A4XL	43-45	35-37	44-46	69-71	71-73	67-69	33

UNISEX WARMUPS RELAXED FIT WARM-UPS			
ALL SIZES			
SIZE	CHEST	WAIST	HIP
XS	23-25	25	27.5
YS	25-28	26	29.5
YM	29-30	27	31.5
YL	31-32	29-30	33.5
XL	32-34	29-30	34.5
S	34-36	30-31	35-37
M	36-38	32-34	37-40
L	38-40	35-37	41-43
XL	42-44	38-40	43-45
2XL	46-48	40-42	46-48

PRACTICE WEAR			
ALL SIZES			
GROUP	SIZE	CHEST	WAIST
Youth	XS	22	19
Youth	YS	24	21
Youth	YM	26	23
Youth	YL	28	24
Adult	XS	32	25
Adult	S	34	26
Adult	M	36	28
Adult	L	38	30
Adult	XL	40	33
Adult	2XL	43	36

GIRL/WOMEN'S STOCK LEOTARDS							
SK SIZE	SHIRT SIZE	ARMHOLE LENGTH	ARMHOLE WIDTH	CHEST	WAIST	HIP	LENGTH
TD	2T	33-35	30-32	17-19	18-19	19-21	37-39
CXS	3-4	37-39	32-36	20-22	19-21	22-24	40-42
CS	5-6	43-45	40-46	23-26	21-22	25-27	43-45
CM	7-8	47-51	50-58	26-29	22-23	28-29	46-48
CL	10	53-57	60-70	29-31	23-25	30-31	49-51
AXS	12/ORS 0-3	55-58	75-86	32-34	23-25	32-34	52-54
AS	14/ORS 3-5	59-63	90-98	33-35	25-26	33-35	55-56
AM	16/ORS 5-7	62-64	98+	35-36	26-27	35-36	57-59
AL	18/ORS 7-9	62-64	98+	36-37	28-29	37-38	60-62
AXL	20/ORS 9-11	62-64	98+	37-39	29-30	39-40	63-65

GYMNASTIC CHIFFS					
SK	XS	S	M	L	XL
up to 5'4"	up to 6'	up to 6'4"	up to 6'8"	up to 7'4"	7'6" & up

GIRL/WOMEN'S COMPETITIVE LEOTARDS							
SK SIZE	ARMHOLE LENGTH	ARMHOLE WIDTH	CHEST	WAIST	HIP	LENGTH	
TD	33-35	30-32	17-19	18-19	19-21	37-39	
CXS	37-39	32-36	20-22	19-21	22-24	40-42	
CS	43-45	40-46	23-26	21-22	25-27	43-45	
CM	47-51	50-58	26-29	22-23	28-29	46-48	
CL	53-57	60-70	29-31	23-25	30-31	49-51	
AXS	55-58	75-86	32-34	23-25	32-34	52-54	
AS	59-63	90-98	33-35	25-26	33-35	55-56	
AM	62-64	98+	35-36	26-27	35-36	57-59	
AL	62-64	98+	36-37	28-29	37-38	60-62	
AXL	62-64	98+	37-39	29-30	39-40	63-65	

#### LENGTH OF PALM TO TIP OF MIDDLE FINGER

To use your hand for GRS & GR7 measure from the base of the palm of the hand to the tip of the middle finger.

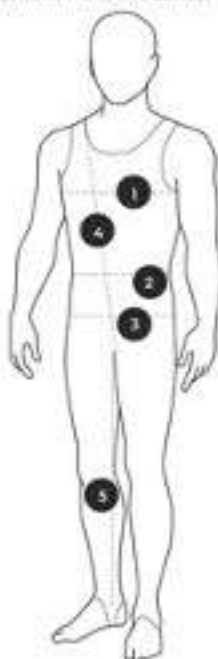
# Men's Sizing Instructions

## How To Measure

When an athlete's measurement contains a partial inch, always round up to the next full inch. If an athlete's measurements fall across two sizes, order the larger size.

- 1. CHEST MEASUREMENT:** Measure the chest with arms at the side. Be sure to take the measurement at the fullest part of the chest.
- 2. WAIST MEASUREMENT:** Measure the waist at the natural waistline which is the narrowest part of the waist. If you're having trouble locating the natural waist, have the athlete bend to the side. The natural waist is where the body bends.
- 3. HIP MEASUREMENT:** Take the hip measurement at the fullest part of the buttocks with the athlete's feet together.
- 4. TORSO MEASUREMENT:** Take the torso measurement from the center of the shoulder, down the torso, through the legs, and back to the shoulder.

- 5. INSEAM MEASUREMENT:** Take the leg inseam measure the athlete without shoes by running the tape from the crotch to one inch above the floor.



# Men's Size Charts

BOY'S/MEN'S SIZE CHART IN INCHES							
SIZE	CHEST	WAIST	HIP	TORSO	LONG TORSO OPTIONS*	SHORT TORSO OPTIONS*	INSEAM
XS	27-28	27-27	27-28	37-42	29-44	35-40	31
S	28-29	27-28	28-28	40-45	42-47	36-41	32
SM	29-30	28-29	29-29	43-48	45-50	39-44	33
M	31-32	29-30	30-30	46-51	48-53	41-46	34
MD	33-34	30-31	31-31	49-54	51-56	44-49	35
XL	35-36	32-33	32-32	52-57	54-59	47-52	36
XXL	37-38	34-35	34-34	55-60	57-62	50-55	37
3XL	39-40	36-37	36-36	58-63	60-65	53-58	38
4XL	41-42	38-39	38-38	61-66	63-68	56-61	39
5XL	43-44	40-41	40-40	64-69	66-71	59-64	40
6XL	45-46	42-43	42-42	67-72	69-74	62-67	41
7XL	47-48	44-45	44-44	70-75	72-77	65-70	42
8XL	49-50	46-47	46-46	73-78	75-80	68-73	43

RELAXED WARM-UP BOY'S/MEN'S JACKET PANTS				
ALL SIZES				
SIZE	CHEST	WAIST	HIP	INSEAM
XS**	30-32	29-31	30-32	31
S	32-34	31-33	32-34	31
SM	34-36	33-35	34-36	32
M	36-38	35-37	36-38	33
MD	38-40	37-39	38-40	34
XL	40-42	39-41	40-42	35
XXL	42-44	41-43	42-44	36
3XL	44-46	43-45	44-46	37

UNISEX WARM-UPS W/0000, W/000L, W/000D			
ALL SIZES			
SIZE	CHEST	WAIST	HIP
XS	33-35	31	37.5
S	35-37	32	39.5
SM	37-39	33	41.5
M	39-41	34	43.5
MD	41-43	35	45.5
XL	43-45	36	47.5
XXL	45-47	37	49.5

\*Long and short torso options available for an additional cost and not available on stock apparel.  
\*\* Select styles are offered in XS.

# Start designing your apparel today.

With over 40 years of experience, we not only know what you need, we know what you deserve. That's why at GK, we do the hard work for you. From following trends and designing top-of-the-line apparel, to providing exceptional customer service, we do it all for you. With infinite possibilities®, your dreams become extraordinary realities.

## 1. Made to Order Designs

Start by selecting from hundreds of competition and tank leotards. Choose your fabric, color, embellishments, and details with our UDesign design studio at [gkelite.com](http://gkelite.com). What you want is what you'll get - extraordinary leotards and apparel with quick delivery timelines and the quality you deserve.

## 2. Custom Designs

Looking for something and don't see it? We still got this! Bring your ideas to life for a completely custom creation. For a one-time, flat rate fee, we'll design your garment, make multiple revisions, and send a fully embellished sample to you before you order.

We want you to be extraordinarily happy. Visit [gkelite.com](http://gkelite.com)





gkelite.com

